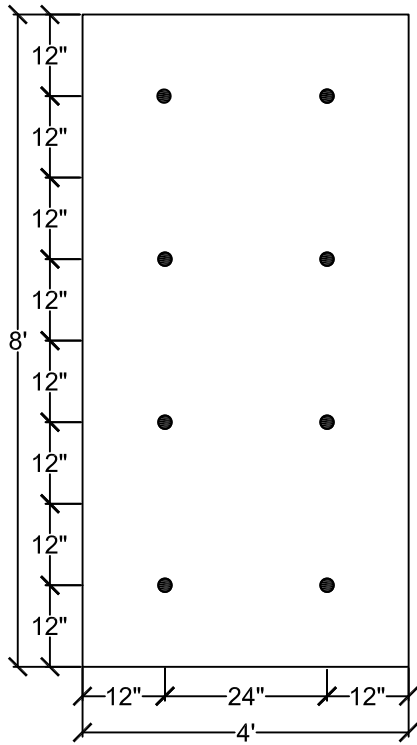
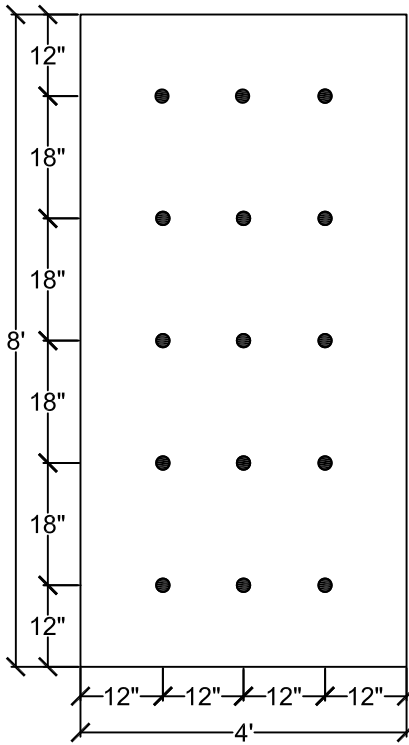


FIELD AREA*
120 PSF



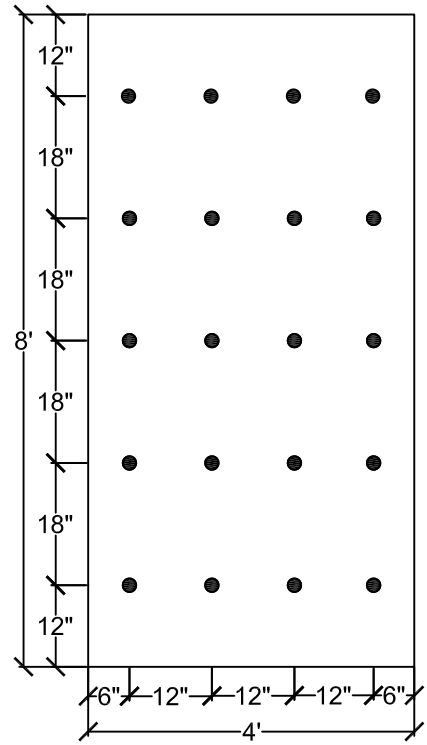
8 FASTENERS PER BOARD

PERIMETER AREA (ENHANCED)



15 FASTENERS PER BOARD

CORNER AREA (ENHANCED)



20 FASTENERS PER BOARD

NOTE:

1. REFERENCE SPECIFIC SYSTEM/INSULATION TYPE AND THICKNESS REQUIREMENTS.
2. DRILL-TEC™ RHINO-BOND® ATTACHMENT SYSTEM IS NOT ACCEPTABLE FOR GYPSUM, CEMENTITIOUS WOOD FIBER OR OSB.
3. REFER TO THE DRILL-TEC™ RHINO-BOND® APPLICATION AND SPECIFICATION MANUAL FOR FASTENER AND DECK REQUIREMENTS.
4. CONSULT FM APPROVALS, ROOFNAV LISTINGS, AND FM DATA SHEETS 1-28 AND 1-29 AT [HTTP://ROOFNAV.FMGLOBAL.COM](http://roofnav.fmglobal.com), FOR DETAILED INSTALLATION REQUIREMENTS AND RECOMMENDATIONS FOR FM APPROVED INSTALLATIONS OR CONTACT TECHNICAL SERVICES AT 1-800-766-3411 FOR ASSISTANCE.

*THE FIELD OF ROOF ATTACHMENTS ABOVE EQUATE TO FM 1-120 RATINGS



DRAWING #
122

120 PSF FASTENING PATTERN
OVER APPROVED STEEL AND CONCRETE DECKS

THIS DETAIL APPLIES TO:
Plate Welded Systems

1 Campus Drive
Parsippany, NJ 07054
www.gaf.com

SCALE
N.T.S.

REVISION DATE
2-19-16