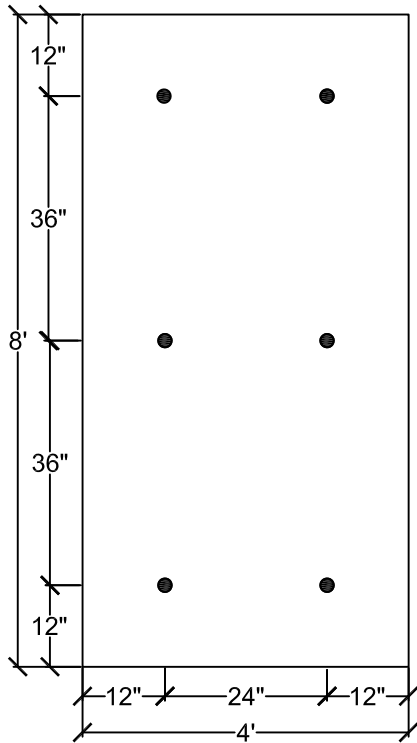
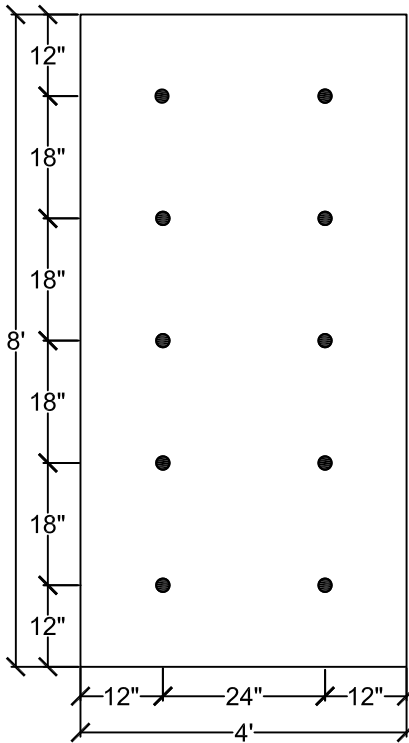


**FIELD AREA*
90 PSF**



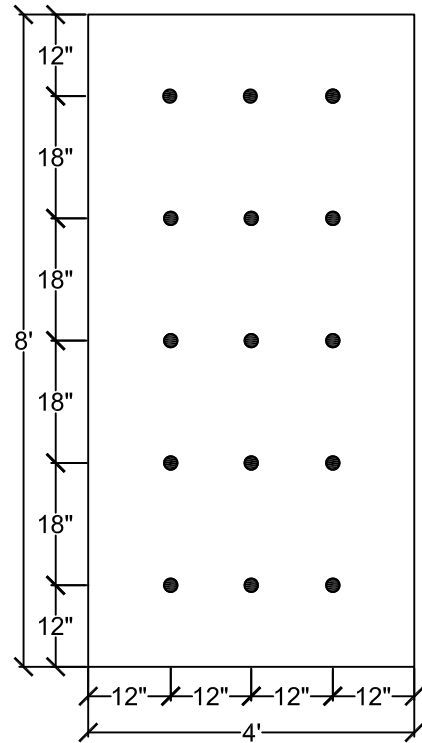
6 FASTENERS PER BOARD

**PERIMETER AREA
(ENHANCED)**



10 FASTENERS PER BOARD

**CORNER AREA
(ENHANCED)**



15 FASTENERS PER BOARD

NOTE:

1. REFERENCE SPECIFIC SYSTEM/INSULATION TYPE AND THICKNESS REQUIREMENTS.
2. DRILL-TEC™ RHINO BOND® ATTACHMENT SYSTEM IS NOT ACCEPTABLE FOR GYPSUM, CEMENTITIOUS WOOD FIBER OR OSB.
3. REFER TO THE DRILL-TEC™ RHINO BOND® APPLICATION AND SPECIFICATION MANUAL FOR FASTENER AND DECK REQUIREMENTS.
4. CONSULT FM APPROVALS, ROOFNAV LISTINGS, AND FM DATA SHEETS 1-28 AND 1-29 AT [HTTP://ROOFNAV.FMGLOBAL.COM](http://roofnav.fmglobal.com), FOR DETAILED INSTALLATION REQUIREMENTS AND RECOMMENDATIONS FOR FM APPROVED INSTALLATIONS OR CONTACT TECHNICAL SERVICES AT 1-800-766-3411 FOR ASSISTANCE.

*THE FIELD OF ROOF ATTACHMENTS ABOVE EQUATE TO FM 1-120 RATINGS



EverGuard
SINGLE-PLY ROOFING SYSTEMS
FIELD OF ROOF SERIES

DRAWING #
121

90 PSF FASTENING PATTERN
OVER APPROVED STEEL AND CONCRETE DECKS

THIS DETAIL APPLIES TO:
RHINO BOND®
ATTACHMENT SYSTEMS

1 Campus Drive
Parsippany, NJ 07054
www.gaf.com

SCALE
N.T.S.

REVISION DATE
2-19-16