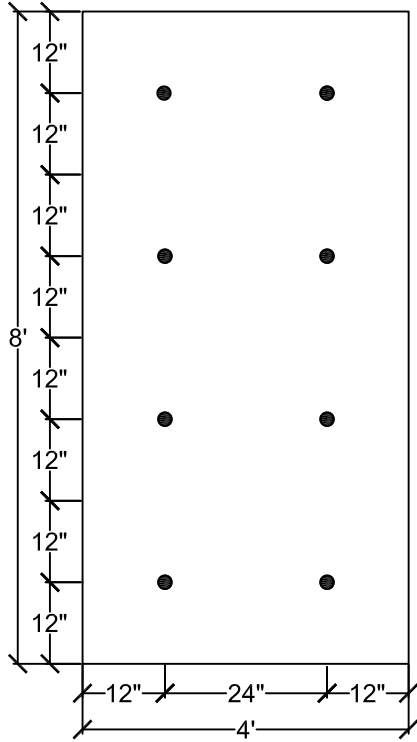
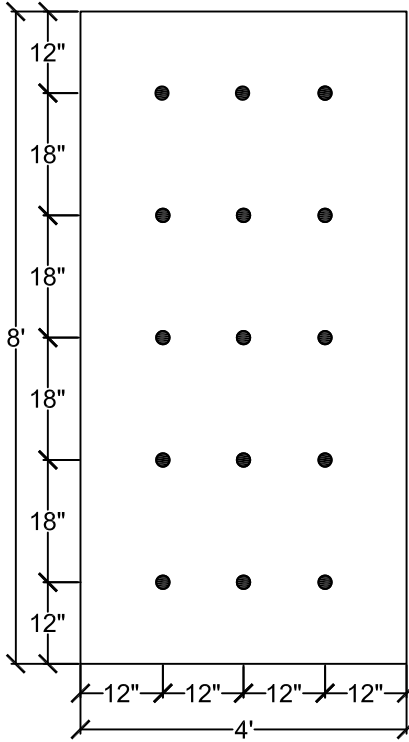


FIELD AREA*
120 PSF



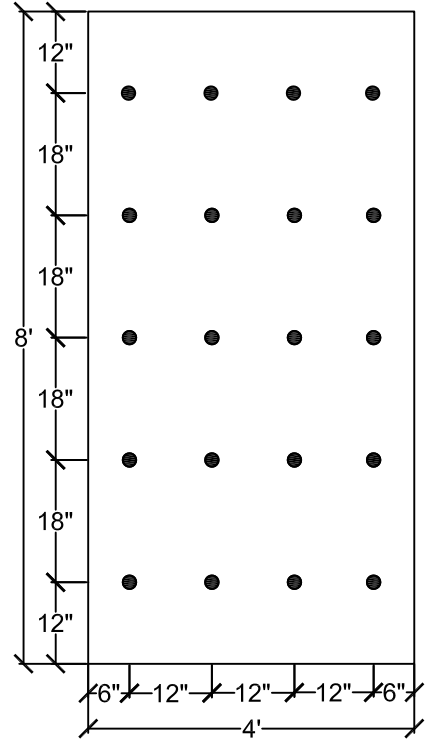
8 FASTENERS PER BOARD

PERIMETER AREA (ENHANCED)



15 FASTENERS PER BOARD

CORNER AREA (ENHANCED)



20 FASTENERS PER BOARD

NOTE:

1. 80KSI DECK - DRILL-TEC™ FASTENERS (#21)
2. REFERENCE SPECIFIC SYSTEM/INSULATION TYPE AND THICKNESS REQUIREMENTS.
3. RHINO BOND SYSTEM NOT SUITABLE FOR GYPSUM, LWIC, CEMENTITIOUS WOOD FIBER OR TRANSITE.
4. REFER TO EVERGUARD® APPLICATION AND SPECIFICATION MANUAL OR GAF.COM FOR FASTENER AND DECK SPECIFICATION.
5. CONSULT FM APPROVALS ROOFNAV LISTINGS AND FM DATA SHEETS 1-28 AND 1-29 AT [HTTP://ROOFNAV.FMGLOBAL.COM](http://roofnav.fmglobal.com) FOR DETAILED INSTALLATION REQUIREMENTS AND RECOMMENDATIONS FOR FM APPROVED INSTALLATIONS OR CONTACT TECHNICAL SERVICES AT 1-800-766-3411 FOR ASSISTANCE.

*THE FIELD OF ROOF ATTACHMENTS ABOVE EQUATE TO FM 1-120 RATINGS



DRAWING #
113

120 PSF FASTENING PATTERN

THIS DETAIL APPLIES TO:
Plate Welded Systems

1361 Alps Rd.
Wayne, NJ 07470
www.gaf.com

SCALE
N.T.S.

REVISION DATE
7-01-13