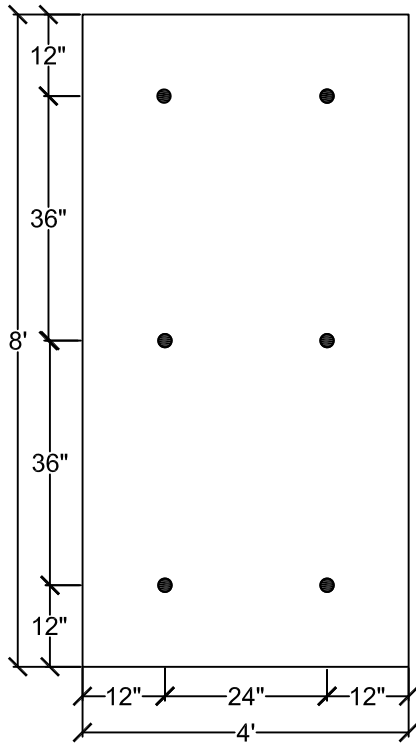
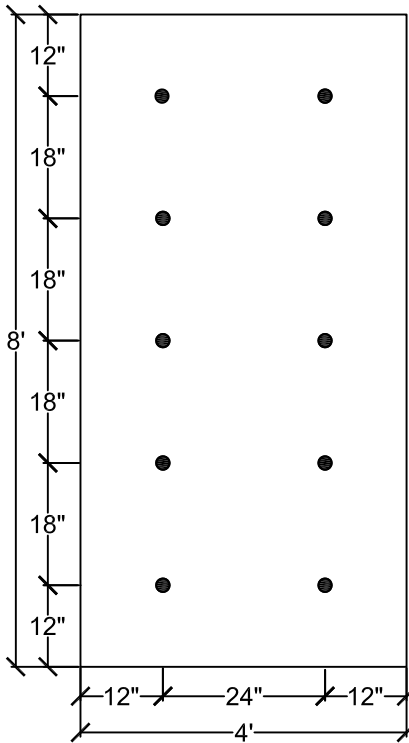


**FIELD AREA\***  
90 PSF



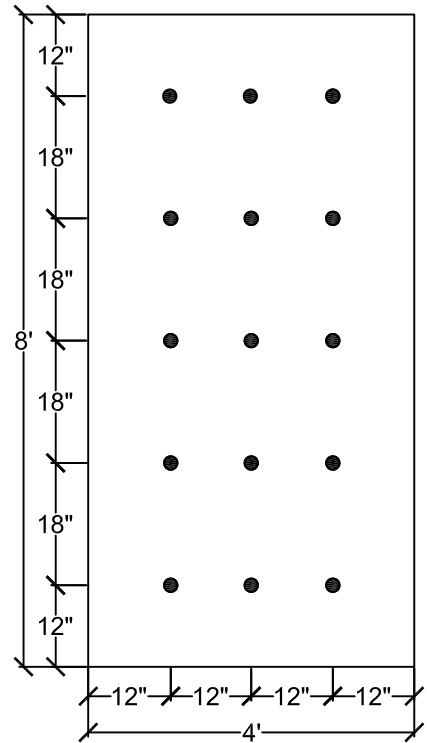
**6 FASTENERS PER BOARD**

**PERIMETER AREA (ENHANCED)**



**10 FASTENERS PER BOARD**

**CORNER AREA (ENHANCED)**



**15 FASTENERS PER BOARD**

**NOTE:**

1. 33KSI DECK - DRILL-TEC™ FASTENERS (#15)
2. REFERENCE SPECIFIC SYSTEM/INSULATION TYPE AND THICKNESS REQUIREMENTS.
3. RHINO BOND SYSTEM NOT SUITABLE FOR GYPSUM, LWIC, CEMENTITIOUS WOOD FIBER OR TRANSITE.
4. REFER TO EVERGUARD® APPLICATION AND SPECIFICATION MANUAL OR GAF.COM FOR FASTENER AND DECK SPECIFICATION.
5. CONSULT FM APPROVALS ROOFNAV LISTINGS AND FM DATA SHEETS 1-28 AND 1-29 AT [HTTP://ROOFNAV.FMGLOBAL.COM](http://roofnav.fmglobal.com) FOR DETAILED INSTALLATION REQUIREMENTS AND RECOMMENDATIONS FOR FM APPROVED INSTALLATIONS OR CONTACT TECHNICAL SERVICES AT 1-800-766-3411 FOR ASSISTANCE.

\*THE FIELD OF ROOF ATTACHMENTS ABOVE EQUATE TO FM 1-90 RATINGS



DRAWING #

112

90 PSF FASTENING PATTERN

THIS DETAIL APPLIES TO:  
**Plate Welded Systems**

1361 Alps Rd.  
Wayne, NJ 07470  
www.gaf.com

SCALE  
N.T.S.

REVISION DATE  
7-01-13