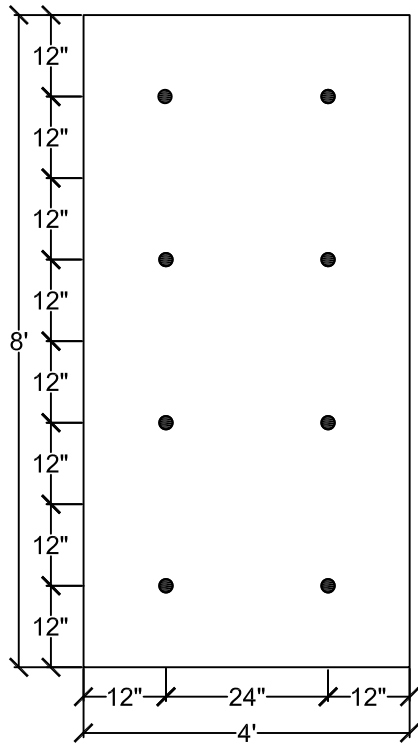
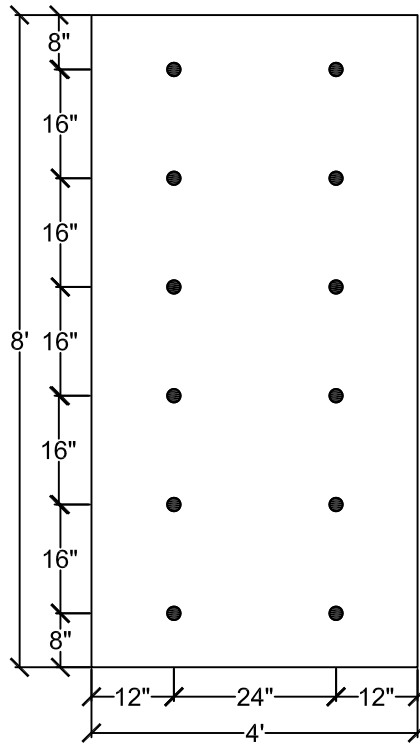


FIELD AREA



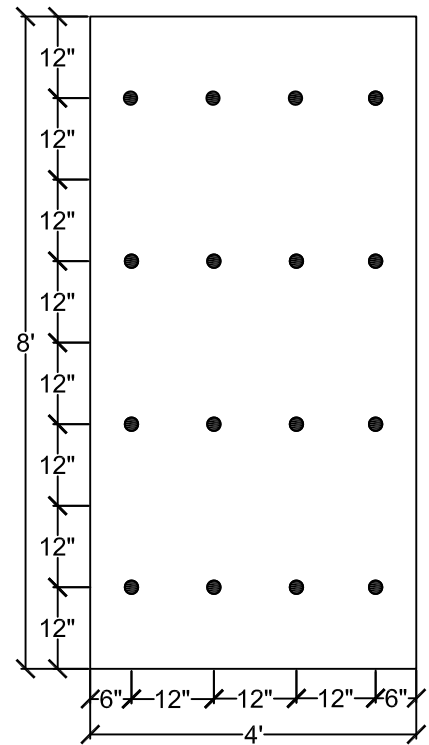
8 FASTENERS PER BOARD

PERIMETER AREA



12 FASTENERS PER BOARD

CORNER AREA



16 FASTENERS PER BOARD

NOTE:

1. REFERENCE SPECIFIC SYSTEM/INSULATION TYPE AND THICKNESS REQUIREMENTS.
2. DRILL-TEC™ RHINO BOND® ATTACHMENT SYSTEM IS NOT ACCEPTABLE FOR GYPSUM, LWIC, CEMENTITIOUS WOOD FIBER OR OSB.
3. REFER TO THE DRILL-TEC™ RHINO BOND® APPLICATION AND SPECIFICATION MANUAL FOR FASTENER AND DECK REQUIREMENTS.



EverGuard
SINGLE-PLY ROOFING SYSTEMS
FIELD OF ROOF SERIES

DRAWING #
111B

STANDARD FASTENING PATTERN
OVER APPROVED WOOD DECKS

THIS DETAIL APPLIES TO:
Plate Welded Systems

1361 Alps Rd.
Wayne, NJ 07470
www.gaf.com

SCALE
N.T.S.

REVISION DATE
11-01-13