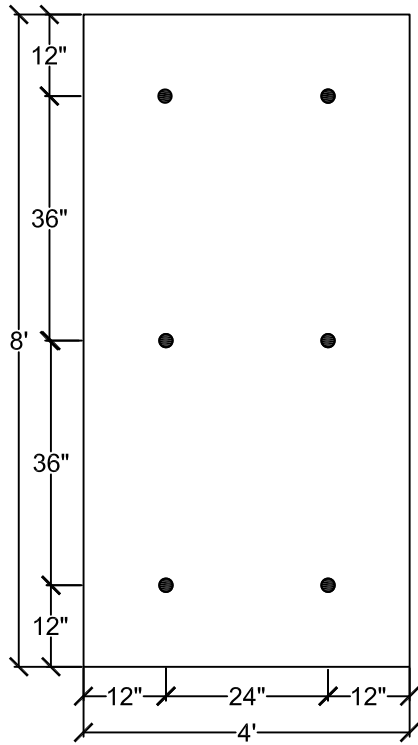
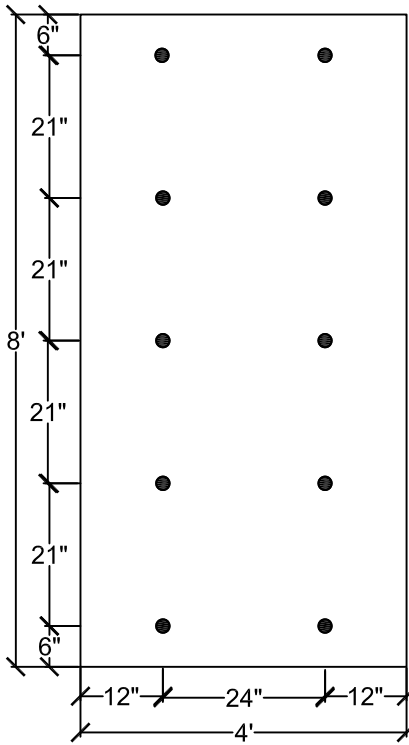


FIELD AREA



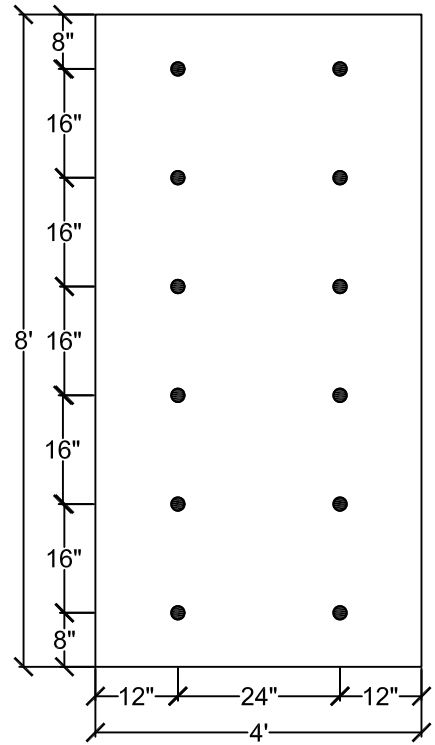
6 FASTENERS PER BOARD

PERIMETER AREA



10 FASTENERS PER BOARD

CORNER AREA



12 FASTENERS PER BOARD

NOTE:

1. REFERENCE SPECIFIC SYSTEM/INSULATION TYPE AND THICKNESS REQUIREMENTS.
2. RHINOBOND SYSTEM NOT SUITABLE FOR GYPSUM, LWIC, CEMENTITIOUS WOOD FIBER OR TRANSITE.
3. REFER TO EVERGUARD® APPLICATION AND SPECIFICATION MANUAL OR GAF.COM FOR FASTENER AND DECK SPECIFICATION.



**EverGuard**  
SINGLE-PLY ROOFING SYSTEMS  
FIELD OF ROOF SERIES

DRAWING #  
**111A**

**STANDARD FASTENING PATTERN**  
OVER STEEL OR CONCRETE

THIS DETAIL APPLIES TO:  
**Plate Welded Systems**

1361 Alps Rd.  
Wayne, NJ 07470  
www.gaf.com

SCALE  
N.T.S.

REVISION DATE  
7-01-13