

METALASTIC™ CMF Curb Mount Flange Expansion Joint Cover

Updated: 8/16



*Quality You Can Trust...From
North America's Largest Roofing Manufacturer!™*



METALASTIC™ CMF

CURB MOUNT FLANGE

EXPANSION JOINT COVER (1 OF 2)

INSTALLATION GENERAL NOTES:

- The roofing membrane must extend to the top of the nailer.
- CMF expansion joint nailers must be mechanically attached 8" (203 mm) on center.
- Wide curbs must be sloped or canted to prevent standing water.
- All joints and patches are to be done using Metalastic™ materials only.
- Flanges must be sealed to roof membrane with Metalastic™ Tape Sealant.
- All surfaces being sealed with Splice Lock or receiving Metalastic™ Tape Sealant must be clean and dry. A hot air blower can be used to dry surfaces.

Safety Warning

- **Wear safety glasses** when nailing or using adhesives to prevent eye injuries.
- **Wear protective gloves** when working with adhesives.
- **Read cautions on labels** of adhesive and sealant containers. Improper care or use can cause serious injury.

Installation Procedures:

- A.** Unroll the CMF on top or along side of the curb where it is to be installed, foam side down. Then position on top of the curb. Fold an outside nailer back and align the first inside metal nailer on top of the curb with the foam along the opening. Nail in place 8" (203 mm) on center.
- B.** Fold the opposite side nailer back and position the second inside nailer on top of the second curb. Nail in place.
- C.** Fold the flexible flanges down the curb face and mark where they end. Fold the flexible flange back and apply the Metalastic™ Tape Sealant to the vertical surface just above the mark. Fold the outside nailers down in place. Nail 8" (203 mm) on center. An ASTM D4586 Type II plastic asphalt cement compatible with the roofing membrane may be used in place of Metalastic™ Tape Sealant.



A



B



C



CMF with Wide Curb one side



METALASTIC™ CMF

CURB MOUNT FLANGE

EXPANSION JOINT COVER (2 OF 2)

Joints

- D. Trim metal nailers back $\frac{1}{8}$ " (3 mm) to prevent overlapping of the nailers and allow the bellows to butt firmly together.
- E. Nail both inside nailers in place as described above, being careful to butt bellows together.
- F. Apply the Metalastic™ Tape Sealant where the outside nailers will fall. Nail in place 8" (203 mm) on center.

Splicing Joints

- G. Ensure surfaces are clean and dry. In cold weather use a hot air blower to dry surfaces. Peel the release paper back about 3" (76 mm) from one end of the **Splice Lock**, and align it with one edge centered over the joint. Press in place working from the edge toward the bellows, peeling release paper off as needed. **WARNING! Metalastic™ Tape Sealant is extremely tacky and will adhere to ANYTHING it comes in contact with. It cannot be repositioned.**
- H. Make sure the **Splice Seal** makes full contact and does not bridge over spots.
- I. Use a hand roller to thoroughly roll the **Splice Seal** to ensure 100% contact

Coal Tar Pitch – Special Instructions

If the Metalastic™ CMF is to be used with a coal tar pitch roofing system, **a barrier of non-coal tar mastic and felt MUST be placed between the Metalastic™ CMF membrane and the coal tar materials.**



D



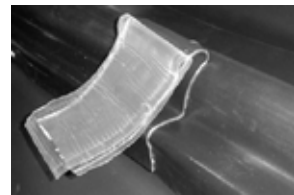
E



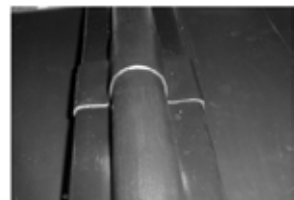
F



G



H



I