

METALASTIC™ CTW Curb To Wall Expansion Joint Cover

Updated: 8/16



*Quality You Can Trust...From
North America's Largest Roofing Manufacturer!™*



METALASTIC™ CTW

CURB TO WALL

EXPANSION JOINT COVER

INSTALLATION GENERAL NOTES:

- The roofing membrane is to extend to the top of the nailer.
- CTW expansion joint nailers are to be mechanically attached 4" (102 mm) on center for the wall and 8" (203 mm) on center for the two curbside nailers.
- Wide curbs are to be sloped or canted to prevent standing water.
- All joints and patches are to be done using Metalastic™ materials only.
- Flanges are to be sealed to roof membrane and wall surface with Metalastic™ Tape Sealant or an ASTM D4586 Type II plastic asphalt cement compatible with the roofing membrane.
- All surfaces being sealed with Splice Lock or receiving Metalastic™ Tape Sealant must be clean and dry. A hot air blower can be used to dry surfaces.
- A short piece of CTW (3" [76 mm]) can be used to establish correct elevation of the wall side flange.
- If the Metalastic™ is to be used with a coal tar pitch roofing system, **a barrier of non-coal tar mastic and felt MUST be placed between the Metalastic™ membrane and the coal tar materials.**

Safety Warning

- **Wear safety glasses** when nailing or using adhesives to prevent eye injuries.
- **Wear protective gloves** when working with adhesives.
- **Read cautions on labels** of adhesive and sealant containers. Improper care or use can cause serious injury.

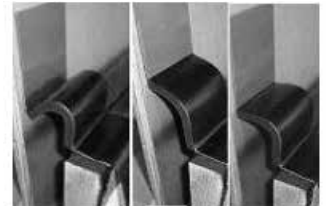
Installation Procedures:

- Using a short piece of the CTW to be installed, mark the correct elevation of the wall side nailer and snap a chalk line. If the curb elevation varies up and down significantly, straight runs may have to be shortened (cut and spliced) to ensure that the 4" (102 mm) metal nailer lies flat.
- Unroll the CTW along the curb where it will be installed. Fold the flexible curb cover back, exposing the inside nailer, align it on top of the curb and nail in place 8" (203 mm) on center.
- Fold the CTW down away from the wall and apply Metalastic™ Tape Sealant to the wall centered 2" (51 mm) below the chalk line where the fasteners will penetrate the metal flange. An ASTM D4586 Type II plastic asphalt cement compatible with the roofing membrane may be used.
- Mark where the outside nailer ends on vertical face of curb and apply sealant tape or mastic above this line or to the metal side of the nailer, then nail in place 8" (203 mm) on center.

Joints

- Trim back nailers slightly to prevent overlapping materials and allow a snug butt joint at the foam bellows.
- Ensure surfaces are clean and dry. In cold weather, use a hot air blower to dry surfaces. Peel the release paper back about 3" (76 mm) from one end of the **Splice Lock** and align it with the top edge, centered over the joint. Press in place working from the edge toward the bellows, peeling release paper off as needed. **WARNING! Metalastic™ Tape Sealant is extremely tacky and will adhere to ANYTHING it comes in contact with. It cannot be repositioned.**
- Make sure the **Splice Lock** makes full contact with the CTW and does not bridge over areas.

Too Low Too High Correct



A



B



C



D



E



F



G