



# UltraHDComposite

Insulation

## The Ultimate Polyiso Cover Board Composite Panel



### Description

Ultra HD™ Composite Insulation is a non-structural composite roofing panel comprised of a top layer of EnergyGuard™ HD cover board (80 psi) adhered with a high-tack adhesive to a second layer of EnergyGuard™ Ultra polyiso insulation (20 psi). All panels of the composite are faced with Coated Glass for increased durability and mold resistance. ††

### Benefits



Reduces handling and labor and eliminates one full application of adhesive in adhered systems.



Combines the maximum durability and R-value of HD cover board with the versatility and thermal efficiency of Ultra polyiso insulation



Lightweight (up to 4 times lighter than gypsum cover boards)



Ideal for new construction and retrofit applications, compatible with some solar arrays and photovoltaic systems



FM approved for Fully Adhered and Mechanically Attached Roof Systems (Consult RoofNav.com for specific assemblies)



Provides two additional layers of R-value as compared to traditional cover boards

††GAF warranties and guarantees do not provide coverage against mold or other biological growth. Refer to gaf.com for more information on warranty and guarantee coverage restrictions.

### Why Polyiso is the right choice for a cover board

Ultra HD™ Composite combines the benefits of a polyiso cover board: high thermal value, light weight and improved moisture resistance with the additional thermal value of a base layer of EnergyGuard™ Ultra.

	Ultra HD™ Composite*	¼" Gypsum**	½" Gypsum**
R-value	11.1 – 26.1	.2 – .36	.5 – .56
Water absorption % volume	4%	9 – 12%	8 – 10%
Weight 4'x8' panel / lbs	2" 22 lbs 4.5" 36 lbs*	38 – 50	64 – 88

\*Ultra HD Composite weighs less than most gypsum alternatives. EnergyGuard HD only weights 12 lbs per board.

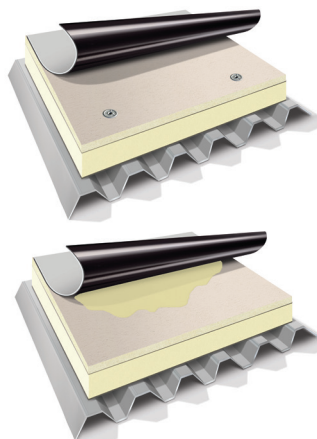
\*\* Gypsum board value ranges are base on product data sheets from several different gypsum board manufacturers

Thickness	R-value
2.0"	R 11.1
2.5"	R 13.9
3.0"	R 16.9
3.5"	R 19.9
4.0"	R 23.0
4.5"	R 26.1

Ultra HD™ Composite can be combined with an additional layer of EnergyGuard or EnergyGuard Ultra for additional thermal value

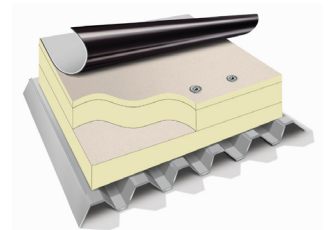
- R 30.1 = 3.0" R 16.9 Ultra HD™ Composite insulation + 2.3" R 13.2 EnergyGuard Ultra
- R 30.1 = 2.5" R 13.9 Ultra HD™ Composite insulation + 2.8" R 16.2 EnergyGuard Ultra

### Single-layer application. Mechanically Fastened or Fully Adhered.



### Two-layer system Mechanically Attached

- Two-layer system allows for additional R-value in the system
- Saves in adhesive compared to two layers of polyiso plus gypsum
- Fewer panels: handled, hoisted on cranes, installed, shipped



### Contact us today

designservices@gaf.com or 866.207.7123



Visit [gaf.com](http://gaf.com)

We protect what matters most™

