

# Master Flow® Safety Caps for Chimneys

## Information Sheet



*Quality You Can Trust Since 1886...  
From North America's Largest Roofing Manufacturer™*

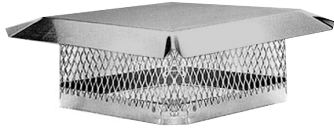


# Safety Caps For Chimneys



Safety Caps for chimneys provide protection against dangerous sparks while reducing downdrafts, clogging, soot, and creosote build-up. They also protect against animal and bird infestation, and deflect other debris and rain from entering the chimney. All Master Flow® Safety Caps feature:

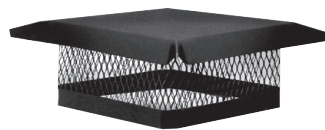
- **Superior Design...** Single piece, heavy gauge hood for longer life and less chance for leaks
- **Long-Lasting Construction...** No rivets or seams to rust or corrode
- **Great Looks...** Epoxy powder finish provides long lasting protection (*note: stainless steel safety cap is unpainted*)
- **Quick, Easy Installation...** Using only a screwdriver
- **Appropriate Code Approval...** Meets most fire codes



## STAINLESS STEEL SAFETY CAPS

- 100% stainless steel construction
- Recommended for coastal areas and for coal & oil burning furnaces
- 4 year ltd. warranty

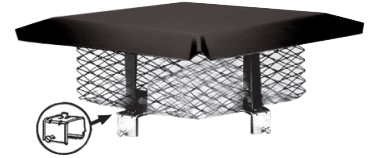
Model No.	Fits Flue Tile Outer Dimensions
<b>CC1313SS</b>	11½" x 11½" – 13½" x 13½"
<b>LKSS</b>	Leg Kit



## FIXED-SIZE SAFETY CAPS

- Our most popular safety caps fit all standard size chimneys
- 4 year ltd. warranty

Model No.	Fits Flue Tile Outer Dimensions/Shapes (Rectangular/Leg Kit)
<b>CC99</b>	7½" x 7½" – 9½" x 9½"
<b>CC913</b>	7½" x 11½" – 9½" x 13½"
<b>CC1313</b>	11½" x 11½" – 13½" x 13½"
<b>LKSS</b>	Leg Kit



## ADJUSTABLE SAFETY CAPS

- Unique adjustable "lock-jaw" bracket mounts cap securely in place
- 4 year ltd. warranty

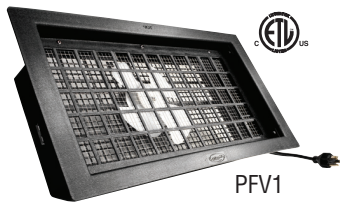
Model No.	Fits Flue Tile Outer Dimensions
<b>SCCA</b>	8" x 8" thru 13" x 13" 8" O.D. Round thru 12" O.D. Round

19

# Foundation Vents

## POWER

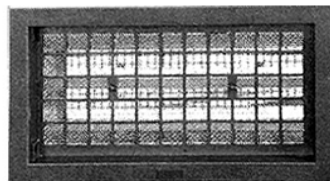
- Removes damaging moisture – helps prevent structural decay and mold growth
- Fits in traditional foundation vent openings, with simple plug and go operation
- Up to 330 CFM/airflow to eliminate moisture during peak times
- Tested and approved by independent laboratories



PFV1

## AUTOMATIC

- Automatically opens at 70°F, closes at 40°
- Helps prevent foundation decay
- Lowers risk of frozen pipes
- Replaces manual vent
- Snap-in installation
- Saves energy



FVRABL

## GRATE STYLE

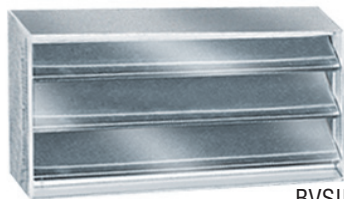
- Positive open/close damper action
- Lintel for foundation block construction
- Lowers risk of frozen pipes
- Saves energy
- Helps prevent foundation decay



500

## BLOCK STYLE

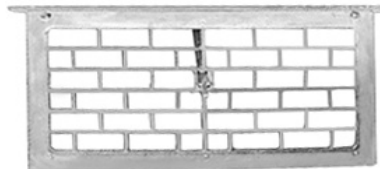
- Aluminum vanes; lintel not required
- For block, brick or frame construction
- Recommended for high level ventilation



BVSII

## GRILL STYLE

- Designed for nailing to floor joists or as a foundation block replacement



LW1/LW1L

## COVER

- Easy to mount over any 16"x8" foundation vent



FVC168

Model No.	Style	Color	Construction	Description	N.F.V.A. (Sq. In.)
<b>PFV1</b>	Power	Black	Hi-Density Polyethylene	16" x 8" 330CFM 1yr. ltd. warranty	57
<b>FVRABL</b>	Automatic	Black	Hi-Density Polyethylene	16" x 8"	57
<b>500</b>	Grate	Mill	Die-cast aluminum	With lintel & slide action – 16" x 8"	28
<b>BVSII</b>	Block	Mill	Galv. Steel/Alum.	Moveable louvers – 15½" x 8" x 2¾" deep	73
<b>LW1</b>	Grill	Mill	Die-cast aluminum	With damper – 16" x 8"	50
<b>LW1L</b>	Grill	Mill	Die-cast aluminum	With 1½" lintel & damper – 16" x 8"	50
<b>FVC168</b>	Cover	Mill	Aluminum	Cover- Fits most sizes	–