

MasterFlow[®] Roof Caps and Other Accessories

Updated: 9/11



*Quality You Can Trust...From North
America's Largest Roofing Manufacturer!™*

www.gaf.com



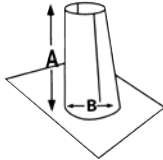
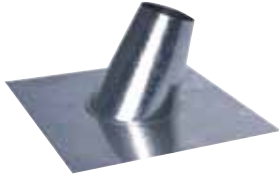
Roof Caps And Other Accessories



Zinc Moss & Mildew Preventer

- EPA approved
- Installs easily near the roof ridge
- For composition, shake or tile roofs
- For long-lasting protection

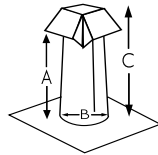
Model No.	Description
NMM50	Tray Pack (6 rolls) – 2.67" X 50ft. coil



Roof Flashing With Tapered Stack

- Press sealed design for maximum leak protection
- 30 Gauge - Specified .013 - .015**

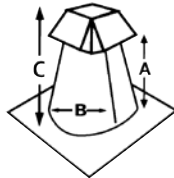
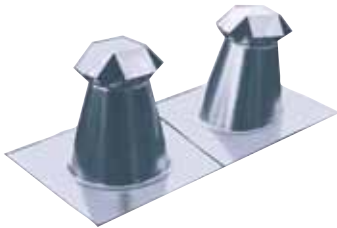
Model No.	Fits Pipe Diameter	Base Size	"A"	Dimensions "B"	"C"
RFTS3	3"	12"X12"	6.125"	5.125"	NA
RFTS4	4"	13"X13"	6.375"	6.125"	NA
RFTS5	5"	15"X15"	6.25"	7.125"	NA
RFTS6	6"	15"X15"	6.75"	8.125"	NA
RFTS7	7"	15"X15"	6.5"	8.125"	NA



Roof Jacks With Vent Caps

- Use for venting kitchen & bath fans, & attic ventilation

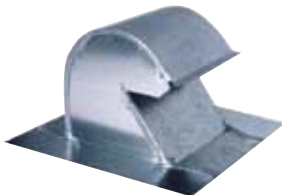
Model No.	Fits Pipe Diameter	Base Size	"A"	Dimensions "B"	"C"
28 Gauge - Specified .015					
RJVC3	3"	12"X12"	8.5"	5.125"	10.25"
RJVC4	4"	13"X13"	8.125"	6.125"	10.25"
RJVC6	6"	15"X15"	8.25"	8.125"	10.75"
RJVC7	7"	15"X15"	6.625"	8.125"	9"
RJVC8	8"	18"X18"	9.75"	10.125"	12.5"
26 Gauge - Specified .019					
26RJVC4	4"	13"X13"	8.125"	6.125"	10.125"
26RJVC5	5"	15"X15"	8.825"	7.125"	10.5"
26RJVC6	6"	15"X15"	8.25"	8.125"	10.75"
26 Gauge - Roof Jacks with Vent Caps - No Pitch					
F26RJVC4	4"	13"X13"	7.625"	6.125"	10.125"
F26RJVC5	5"	15"X15"	8.125"	7.125"	9.875"
F26RJVC6	6"	15"X15"	8.25"	8.125"	10.75"



All Purpose Vents

- Large 10" base opening for gang venting
- 26 gauge - specified .019

Model No.	Base Size	"A"	Dimensions "B"	"C"
26APV10	16"X16"	10.375"	9.875"	12.00"
F26APV10	16"X16"	10.375"	9.875"	11.75"



Goose Neck Vent

- 26 gauge - specified .019
- Available in black or aluminum finish

Model No.	Fits Pipe Diameter	Base Size	"A"	Dimensions "B"	"C"
GNV4	4"	11.625" x 9.12"	NA	4.125" x 6.5"	6.375"
GNV6	6"	11.75" x 11.25"	NA	6.125" x 6.625"	6.25"
GNV10	10"	16" x 16"	NA	10" x 10"	8.75"

NOTE: Available in various colors, call for further details.



Vent Caps

- To cap pipes for rain, snow and debris protection
- 30 gauge - specified .013 - .015

Model No.	Fits Pipe Diameter
VC3	3"
VC4	4"
VC5	5"
VC6	6"
VC7	7"
VC8	8"



Storm Collars

- Adjustable for various pitches
- 28 Gauge - Specified .015**

Model No.	Fits Pipe Diameter
SMC3	3"
SMC4	4"
SMC5	5"
SMC6	6"



Versa Caps

- Non-clogging, positive draft design
- For chimney, flue or hot stack installation
- Clamp fitting that's adjustable for all standard sizes
- Aluminum models, U.L. listed

Alum. Model No.	For Pipe with an Outside Dia. of:	For Dbl. Wall Metal Pipe	For Sgl. Wall Metal Pipe	For J-M Trans-Site	Overall Ht.	Overall Dia.
3050	2 ⁷ / ₈ "-5"	3" & 4"	3" & 4"	3" & 4"	4 ¹ / ₂ "	6 ⁵ / ₈ "
5070	4 ⁷ / ₈ "-7"	5" & 6"	5" & 6"	5" & 6"	4 ³ / ₄ "	9 ¹ / ₂ "
7090	6 ⁷ / ₈ "	7" & 8"	7" & 8"	7" & 8"	5 ⁷ / ₈ "	11 ¹ / ₈ "
9011	8 ⁷ / ₈ "-11"	9" & 10"	9" & 10"	9" & 10"	6 ¹ / ₂ "	12 ³ / ₄ "
1200	11 ⁷ / ₈ "-14 ¹ / ₂ "	12"	12" & 14"	12"	8 ¹ / ₁₆ "	17 ⁹ / ₁₆ "