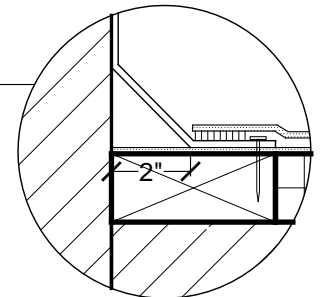


**NOTE:**

1. DETAIL TO BE USED IN CONJUNCTION WITH STANDARD GUIDE SPECIFICATION CONTAINING REQUIREMENTS FOR NAILERS, INSULATION ETC.
2. APPLY EVERGUARD® TPO CUT EDGE SEALANT TO ALL CUT REINFORCED TPO EDGES ( REFER TO DETAIL FD 115 ).



PARAPET WALL & CURB SERIES

**COATED METAL JOINT DETAIL**

HEATWELD ONLY

DRAWING #

**310**

SCALE

N.T.S.

SYSTEM

**FD**

ISSUE/ REVISION DATE

3-1-10