

GAF EverGuard[®] TPO Architectural Profile

Part 1-General

1.1 Accessory Description

- A. EverGuard TPO Architectural Profile is a self-adhered option for GAF TPO roofing systems.

1.2 Delivery Storage and Protection

- A. Deliver products to site in original containers with seals unbroken and labeled with manufacturers' name, product brand name and type.
- B. Store materials in weather protected environment in accordance with good roofing practices.
- C. All materials stored outside shall be raised above ground or roof level on pallets, and covered with tarpaulin or other waterproof materials. Store cartons of the Architectural Profiles outside under tarpaulins or other waterproof materials five days before installation to acclimate the rails.
- D. Materials that are wet or damaged to the extent that they will no longer serve their intended purpose shall not be used. Remove all damaged materials from job site.

Part 2-Products

2.1 EverGuard TPO Architectural Profile

- A. SA Profiles come in 10' lengths. Connector dowels are bagged separately.
- B. Profiles are available in Red, Blue, Green, White and Grey, along with special order Tan.
- C. Dimensions of the TPO Architectural Profile are 1 ½" base and 1 ¼" vertical rib.
- D. Pressure sensitive tape with a release liner has been factory applied on the base of each profile.
- E. Connector Dowels: 3" Clear plastic dowels used to join two rails together by inserting at the top of the rail.

2.2 EverGuard[®] Batten Seam Profiles

- A. The EverGuard[®] TPO Batten Seam Profile comes in the same 10" lengths and dimensions (1 ½" base and 1 ¼" vertical rib) as the TPO architectural profile. However, the batten seam profiles are an "A" in shape.
- B. The key advantage of these profiles is that they will meet a 5' radius.
- C. The dimensions of the ridged profile and flexible profile are the same--1 ½" base and 1 1/14" vertical".
- D. Pressure sensitive tape with a release liner has been factory applied on the base of each profile.

Part 3-Working Environment

3.1 Hazards

- A. GAF EverGuard Roofing Membranes are slippery when wet or covered with ice, snow or frost. Working on flat or sloped surfaces can be hazardous. Safety measures should always be strictly followed.

4.1 Set-up

- A. Where TPO membrane panels are running perpendicular to the gutter edge, the profiles should be installed on the seam overlap next to the step-off for initial alignment purposes. Be sure not to install against the junction of the welded seam area and ensure seams are straight and true.
- B. Do not adhere profiles directly over the top of the seams step off areas (these are the regions that the contractor would probe). Make sure that these "guide" profiles (guide profiles install first on seam overlaps then fill in between these with other profiles) are straight. Measure off these guide profiles when filling in between the guide profile rails. Profiles should never obstruct the drainage of water from the roof.

- C. If the seams are not perpendicular to the gutter edge, then adjust your measurements to make sure the profiles run straight. All rails must run with the slope of the roof; if the rails do not run with the roof's slope then they may impede drainage.
- D. When the profile must cross a seam—i.e., at an end lap in a run—cut the profile at the seam edge and insert a connector to keep it aligned. Running profiles over end lap seams may be a common issue on most roofs.
- E. Profiles should be held away from all flashing seams a minimum of 2". These penetrations include curbs, pipe flashings, edge metal stripping membrane, and ridge flashings. Holding the profiles 2" away from these flashings eliminates the step-off at the base flashing.
- F. Profiles should be held away from elevation transitions (including valleys, rake and gutter edge) a minimum of 8". Profiles can be run to the tops of the ridges or stopped 8" below a shop-fabricated ridge cap.

Part 5- Execution

5.01 Preparation of Roofing Area—New Roofing

- A. When installing the GAF EverGuard TPO Architectural Profile to a roofing project in progress, be sure to install the profiles before the roof becomes contaminated with dirt, dust or debris.

5.02 Preparation of Roofing Area—Existing Roofing

- A. If retrofitting existing roofs with the GAF EverGuard TPO Architectural Profile, power washing of the roofing membrane is recommended as a first step to remove dirt and debris.
- B. After power washing, allow the roof to dry and lay out the guide lines for profile installation. Be sure to clean the area directly underneath where the profiles will be installed.
- C. Membrane that is weathered over 12 hours or oxidized will require the use of EverGuard TPO Cleaner and a mildly abrasive scrubbing pad to remove the weathered/oxidized top surface layer. This must be followed by cleaning with a white cloth moistened with EverGuard TPO Cleaner. When using EverGuard TPO Cleaner, keep the work area well ventilated and use chemical resistant gloves.

5.03. TPO Architectural Profile Installation.

1. Inspect the substrate of the roof before the installation of the Architectural Profile. If the substrate is very irregular, then the Secure Rod Hot Air Welded System may be the most secure way to install the Architectural Profiles.
 - A. Make sure the membrane substrate is clean and dry.
 - B. Architectural Profile can be installed directly on top of the seam membrane overlap. Do not install the Architectural Profile Rail in the seam step-off area.
 - C. Lay out all the profiles next to your work that are needed for your particular installation.
 - D. Minimum profile length shall be a 24", unless deemed necessary by a less than 2' run. Accommodating existing profile lengths may require adjustment. For example, on a 21' 9" run: the first profile is 10' and the second profile 9'; cut off 12" to create a third profile of 2' 9". Cutting the profiles can best be accomplished with a carpenter's miter box and a fine-tooth hand saw.
 - E. Align the first Architectural Profile with the established guideline. Slowly remove the release liner at a 45 degree angle, adhering the profile as you go.
 - F. Hand roll both sides of the profile's base.
 - G. Install subsequent profiles leaving 1/8" between profiles, while hand rolling the bases.
 - H. After completing installation of adjoining Architectural Profiles, install the connector dowels at the butt-end underside lip.

5.04 Installation of Batten Seam Profiles

- A. Be sure and follow cleaning procedures mentioned in **5.01** and **5.02**.
- B. Align the first Architectural Profile with the established guideline. Slowly remove the release liner at a 45 degree angle, adhering the profile as you go.
- C. Hand roll both sides of the profile's base.
- D. Install the connector dowels in the end of the profile after installation of each profile.
- E. Connect the next profile, then reach under the profile and pull off the release paper to set the profile.
- F. Hand roll both sides of the profile's base.

5.05 Additional Products and equipment for slopes greater than 1 ½" in 12"

- A. EverGuard Caulking White (gun grade); or, for Tan, Blue, Red, Green or Gray, a tinted gun grade caulking.
- B. EverGuard Secure Rod TPO Welding Rod available in White, Tan, Grey, Red, Green and Blue. Secure Rod is 5/32" and available in 6" and 48" lengths.
- C. Attachments for hand-held heat guns; a tubular nozzle at 5mm with a supplemental round speed welding nozzle at 4mm is recommended.

5.06 Execution

- A. A Ensure the membrane substrate is clean and dry.
- B. Architectural Profiles can be installed directly on top of the seam membrane overlap. Do not install the Architectural Profile in the seam step-off areas.
- C. Lay out all the profiles next to your work area that are needed for your particular installation.
- D. Minimum profile length shall be 24", unless deemed necessary by a less than 2' run. Accommodating
- E. existing profile lengths may require adjustment. For example, on a 21' 9" run: the first profile is 10' and the second profile 9'; cut off 12" to create a third profile of 2' 9". Cutting the profiles can best be accomplished with a carpenter's miter box and a fine tooth hand saw.
- F. Align the first Architectural Profile with established guidelines. Slowly remove the release liner at a 45 degree angle and adhere the profiles as you go.
- G. Hand-roll both sides of the profile's base.
- H. Install subsequent profiles, leaving a 1/8" gap between rails and hand rolling all the bases.
- I. After completing installation of adjoining Architectural Profiles, install the connector dowels at the butt-end underside lip.

5.07 Installation of hot air welded Secure Rod Anchoring System.

1. A 6" secure rod may be installed intermittently per specifications to affix the Architectural Profiles to the EverGuard TPO membrane. If a 20-year EverGuard Warranty is desired, then the entire lengths of Architectural Profiles must be completely welded with the Secure Rod. This can easily be facilitated by using the available 4' Secure Rod lengths.

- A. For the 6" Secure Rod installations, the following spacing is required:

For the application of a single Architectural Profile, start off with a 6" Secure Rod welded to both sides of the base of the profile, starting at the bottom of the profile. Next, move to the top of the single profile and repeat. Now, add 4 more 6" Secure Rods evenly spaced on both sides of the profile and opposite of each other and weld them in place.

- B. When using multiple profile installations with the 6" Secure Rod, the following spacing is required:

On the first profile installed, place and weld the Secure Rod as described in section 507.1A. Next, place the 6" Secure Rods on both sides of the junction of the two profiles and weld the Secure Rods in place. This gives you a configuration of 3" on each profile. Now place 4 more

6” Secure Rods evenly spaced on both sides of the profile and opposite of each other and weld them in place.

- C. Installation of a Architectural Profile that is less than 10’ long but longer than 5’ can be installed as follows:
- Install the 6” Secure Rods at the top and bottom of the profile as outlined in section 507.1A.
 - Now place the 4 6” Secure Rods on both sides of the profile evenly spaced and opposite of each other and weld the Secure Rods in place.
- D. Profiles of less than 5’ can be installed as follows:
- Install the 6” Secure Rods at the top and bottom the profile as outlined in section 507.1A. In the middle of this short profile it only required to have one pair of 6” Secure Rods centered the length of the rail and welded opposite of one other.
- E. For an extended length warranty the following Secure Rod application method shall be followed:
- Using the 4’ Secure Rod, hot air weld the rods in place along 100% of the length of the profiles. This will give an overall 100% weld to all edges of the Architectural Profile System. If the 4’ Secure Rod needs to be cut down in length, a pair of side cut pliers or tin snips will work nicely.

5.08 Installation of Subsequent Rows

- A. Measure the space between the Architectural Profile. Once the proper spacing is determined, establish guidelines to ensure the correct placement of profiles.
- B. When using a chalk line, the line should be made along the edge of the profile—not the center line of the profile. The profile width is 1 1/2”, so the chalk line should be placed 3/4” from the centerline.

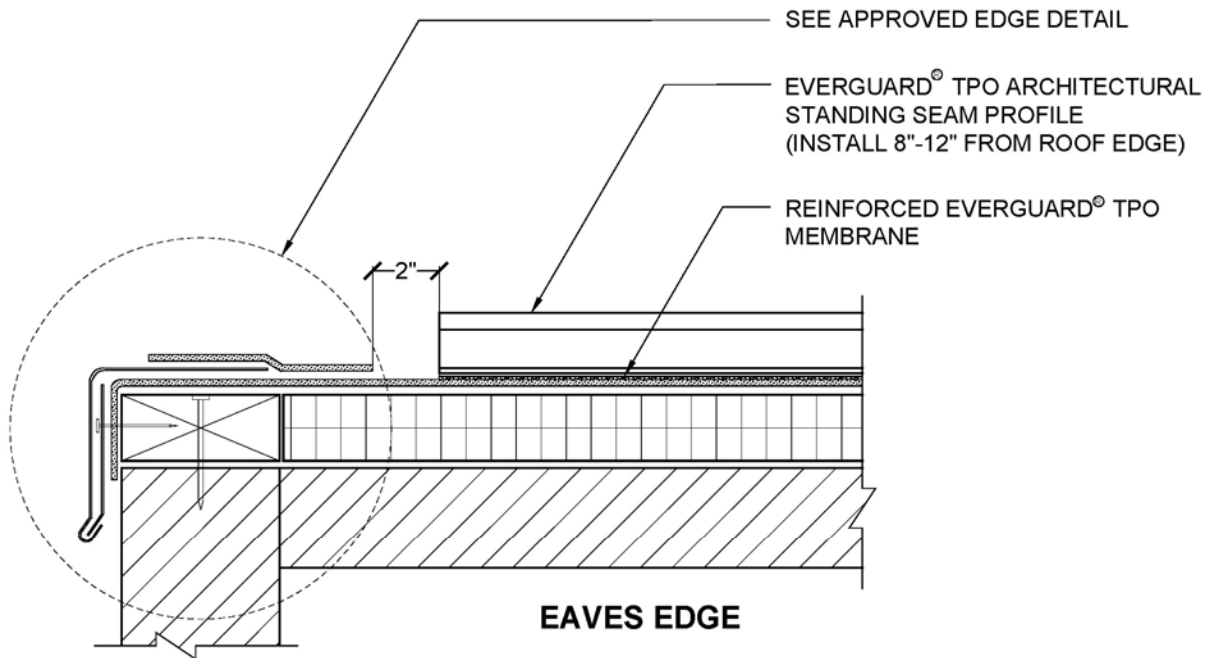
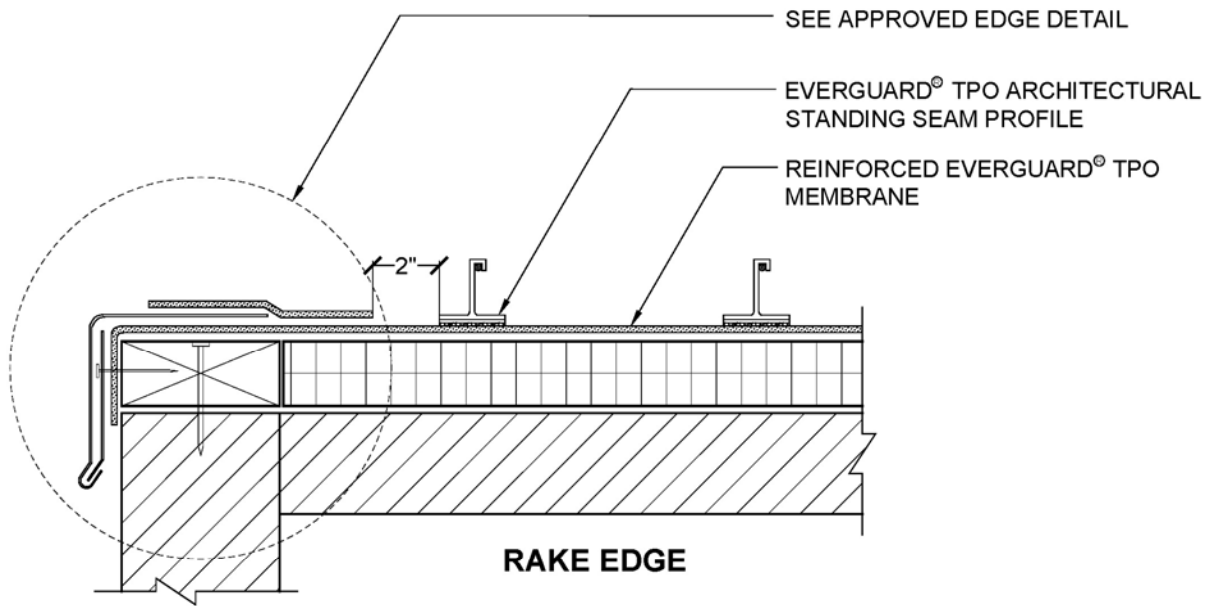
NOTE: When using a chalk-line, the contractor should pre-snap the chalk line before snapping the line on the roof. This gets rid of extra chalk on the line and makes for a better installation.

NOTE: As an alternate to a chalk line, a laser or template guide can be used to measure relative spacing for subsequent rows.

Part 6-Finishing the Installation

6.01 Clean-up

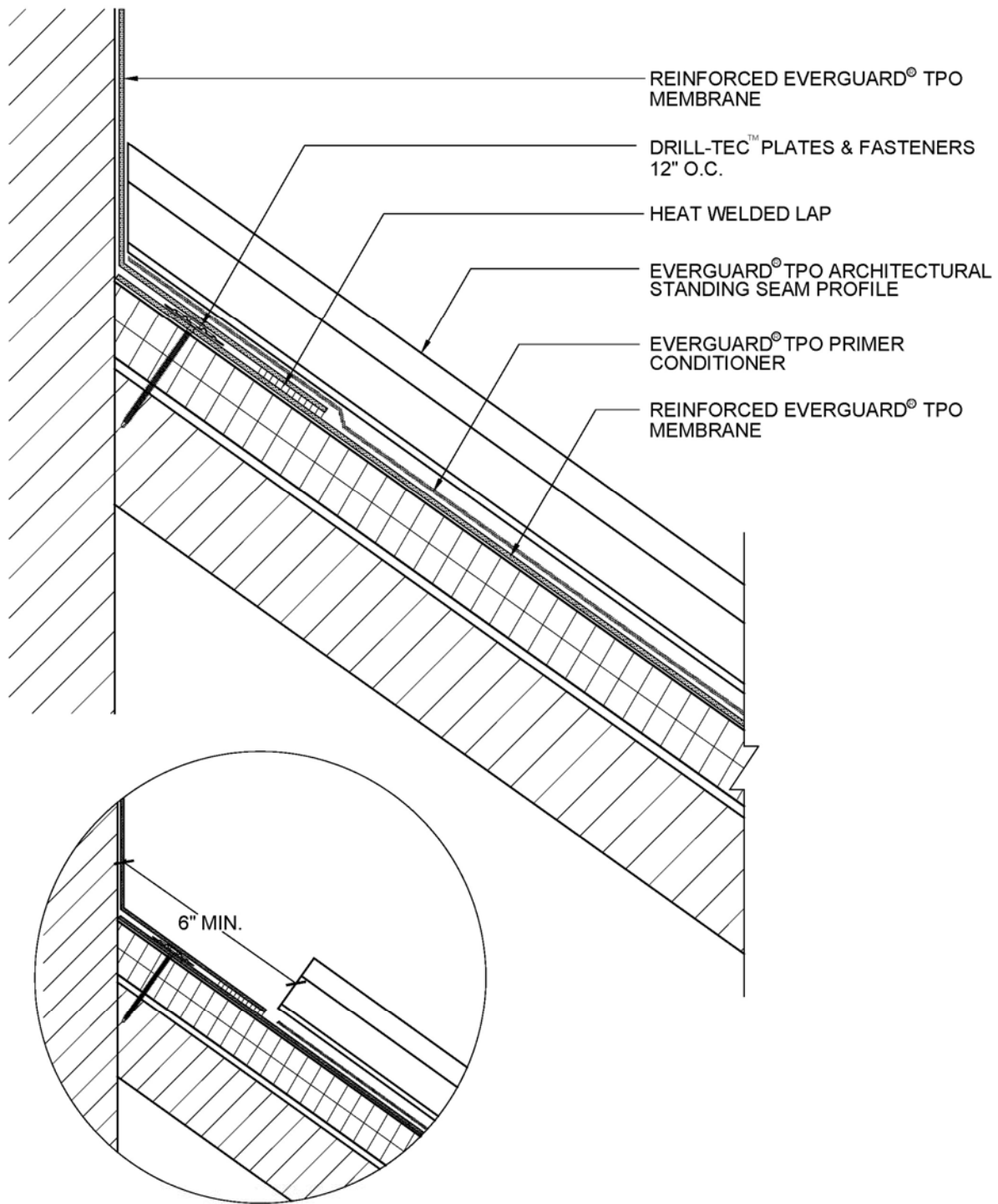
- A. Remove all trash and waste from the completed project. This should be done in a manner conforming to current EPA regulations and local laws.
- B. Make sure that all drains and gutters are open and clog-free.



NOTE:

1. EVERGUARD® COATED METAL IS AVAILABLE IN MATCHING COLORS TO FIELD MEMBRANE AND STANDING SEAM PROFILE IF NEEDED REFER TO EVERGUARD EDGE DETAILS - 200 SERIES
2. WHITE COVER TAPE MAY BE USED WITH A MAXIMUM 15 YEAR WARRANTY.

 GAF <small>GAF MATERIALS CORPORATION www.gaf.com</small>	 EverGuard <small>SINGLE-PLY ROOFING SYSTEM</small>	RAKE & EAVE EDGE DETAIL	DRAWING # 002	SYSTEM SSP
		TPO ONLY	SCALE N.T.S.	ISSUE/ REVISION DATE 7-01-09



ALTERNATE - TERMINATE 6" MIN. FROM HEAD WALL



ARCHITECTURAL
STANDING SEAM
PROFILE SERIES

SLOPE TRANSITION DETAIL

TPO ONLY

DRAWING #

003

SCALE

N.T.S.

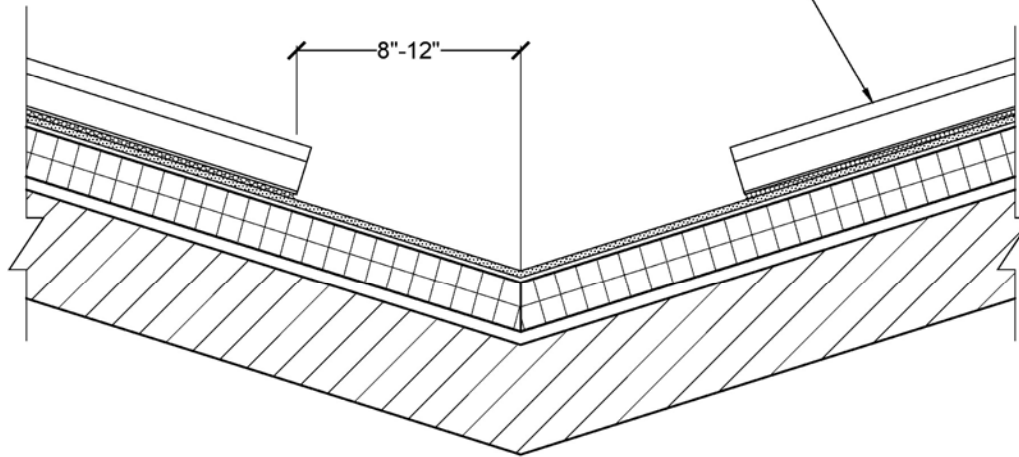
SYSTEM

SSP

ISSUE/ REVISION DATE

7-01-09

EVERGUARD® TPO ARCHITECTURAL
STANDING SEAM PROFILE



VALLEY

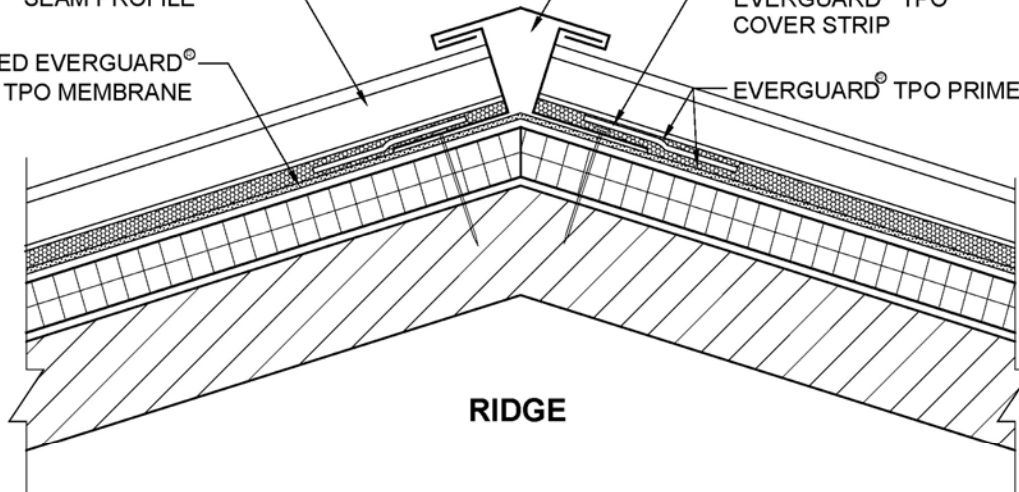
EVERGUARD® TPO
ARCHITECTURAL
STANDING
SEAM PROFILE

REINFORCED EVERGUARD®
TPO MEMBRANE

RIDGE CAP BY OTHERS

EVERGUARD® TPO
COVER STRIP

EVERGUARD® TPO PRIMER



RIDGE

NOTE:

1. EVERGUARD® COATED METAL IS AVAILABLE IN MATCHING COLORS TO FIELD MEMBRANE AND STANDING SEAM PROFILE IF NEEDED
2. WHITE COVER TAPE MAY BE USED WITH A MAXIMUM 15 YEAR WARRANTY.



ARCHITECTURAL
STANDING SEAM
PROFILE SERIES

VALLEY & RIDGE DETAIL

TPO ONLY

DRAWING #

004

SYSTEM

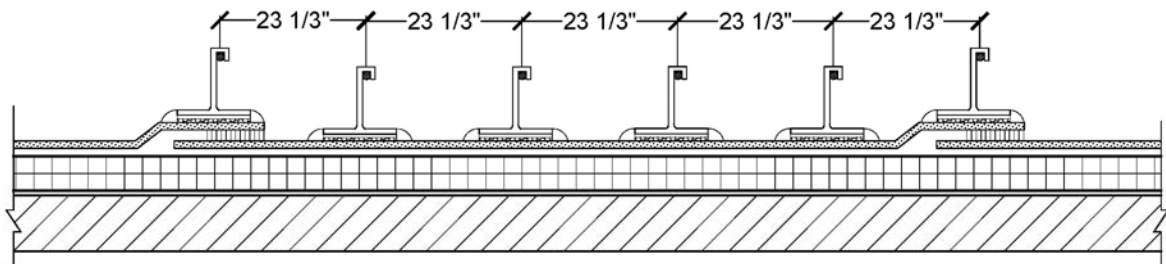
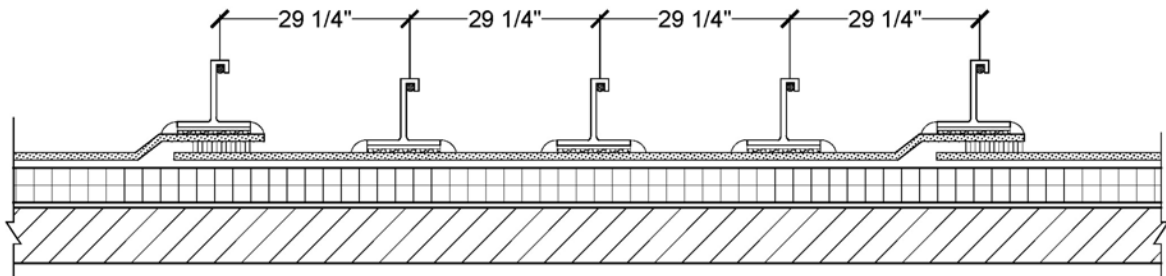
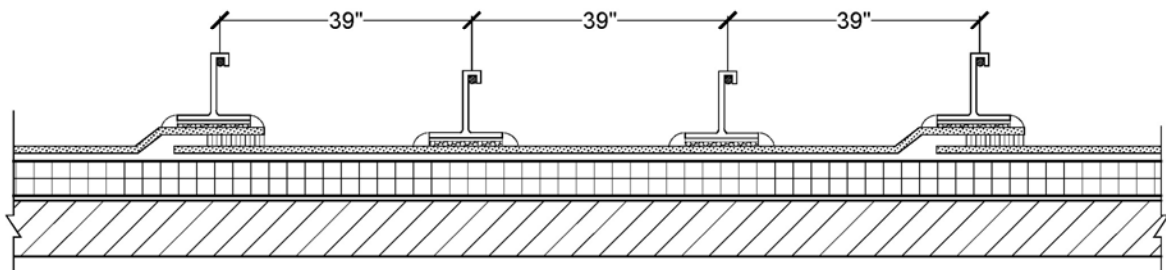
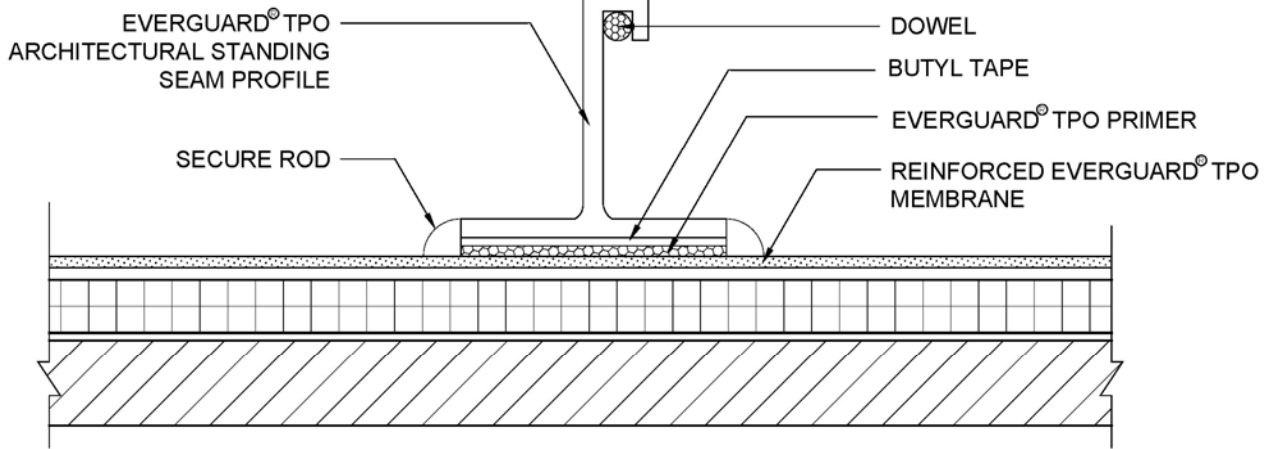
SSP

SCALE

N.T.S.

ISSUE/ REVISION DATE

7-01-09



NOTE: 1. IF TPO SHEETS RUN PARALLEL WITH EAVE, PROFILES MAY CROSS OVER TPO SEAMS.



ARCHITECTURAL
STANDING SEAM
PROFILE SERIES

PROFILE & SPACING DETAIL

TPO ONLY

DRAWING #

005

SCALE

N.T.S.

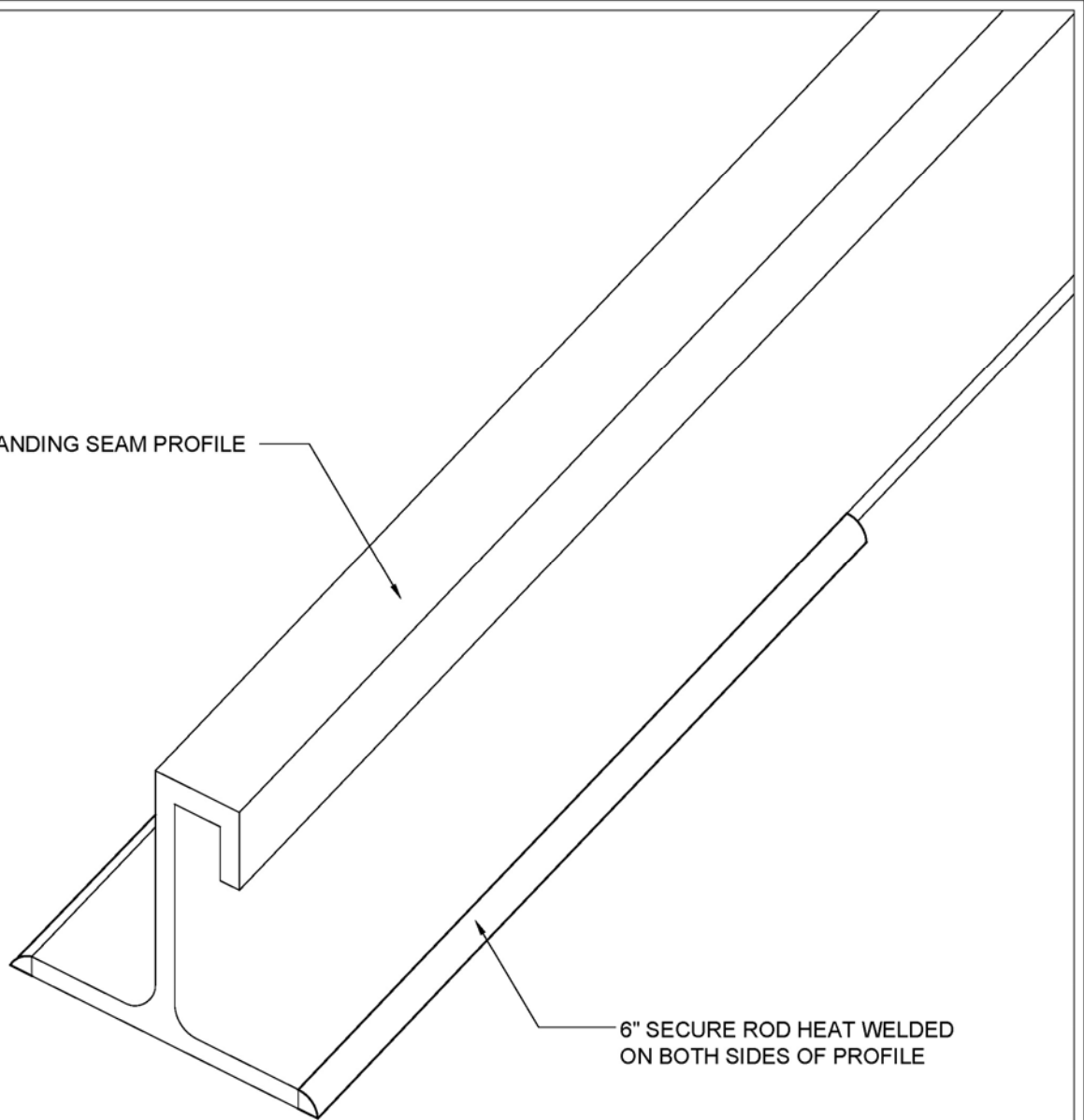
SYSTEM

SSP

ISSUE/ REVISION DATE

7-01-09

STANDING SEAM PROFILE

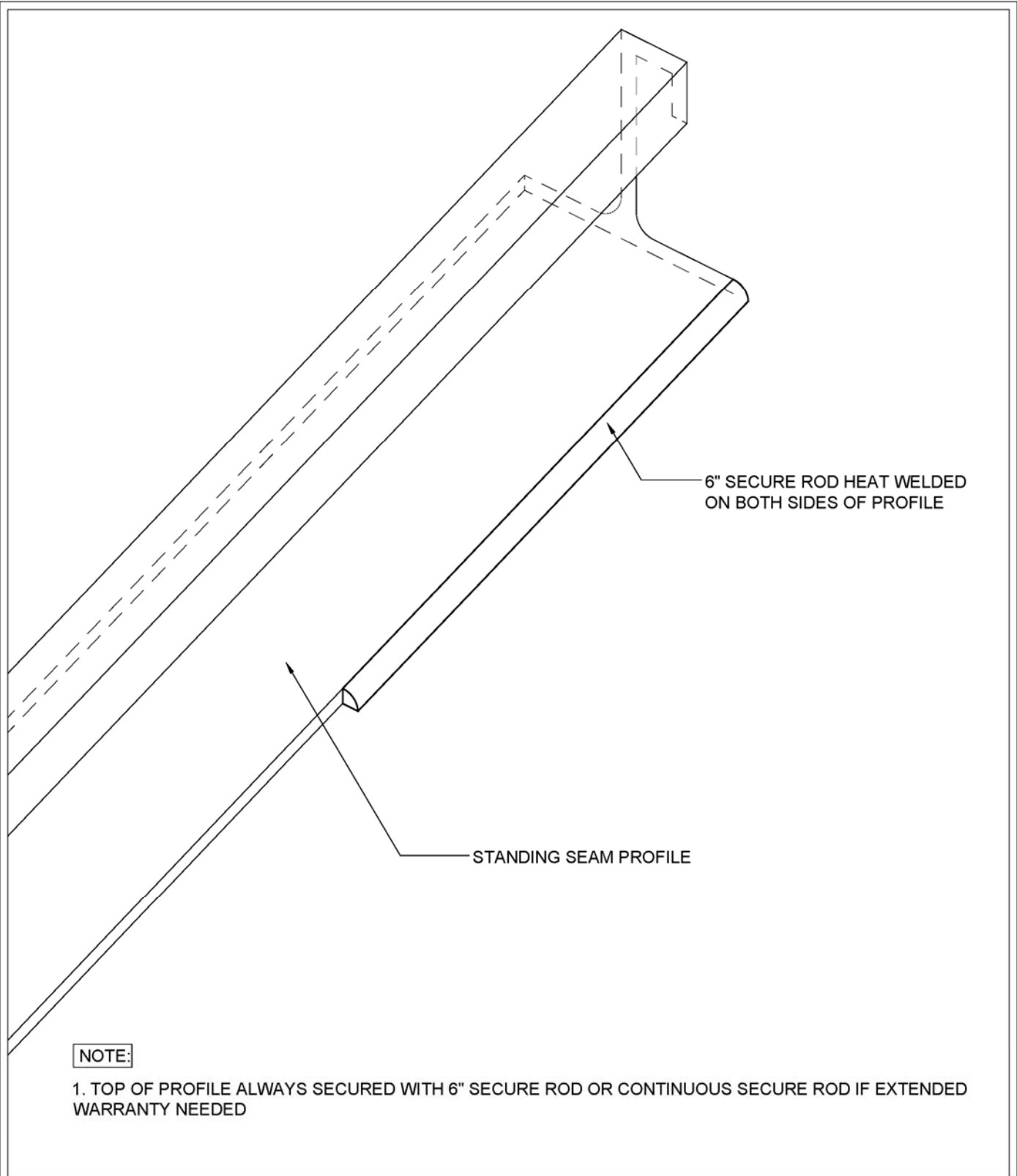


6" SECURE ROD HEAT WELDED
ON BOTH SIDES OF PROFILE

NOTE:

1. BOTTOM OF PROFILE ALWAYS SECURED WITH 6" SECURE ROD OR CONTINUOUS SECURE ROD IF EXTENDED WARRANTY NEEDED

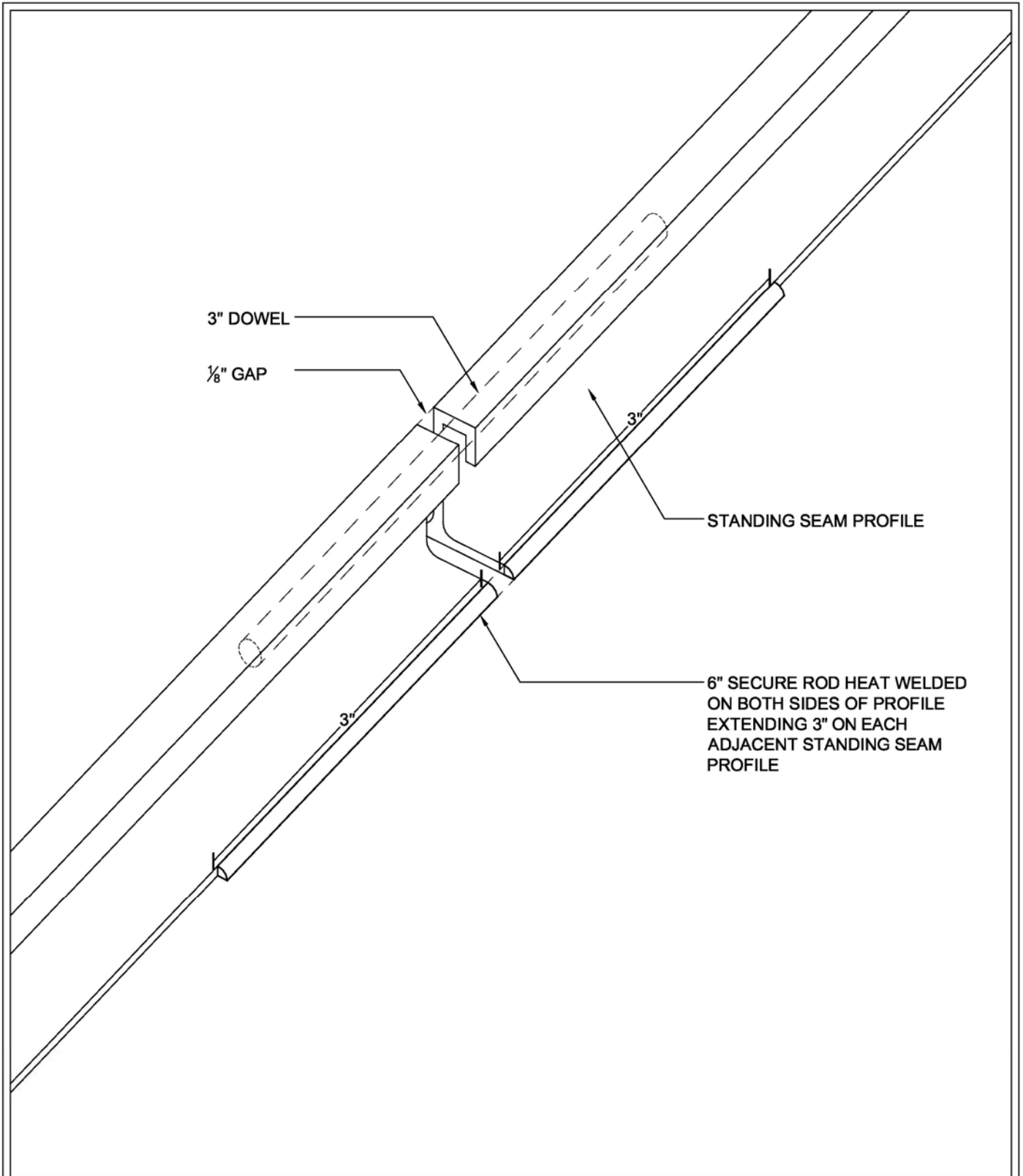
 GAF MATERIALS CORPORATION www.gaf.com	 ARCHITECTURAL STANDING SEAM PROFILE SERIES	LOWER PROFILE SECUREMENT	DRAWING # 006	SYSTEM SSP
		TPO ONLY	SCALE N.T.S.	ISSUE/ REVISION DATE 7-01-09



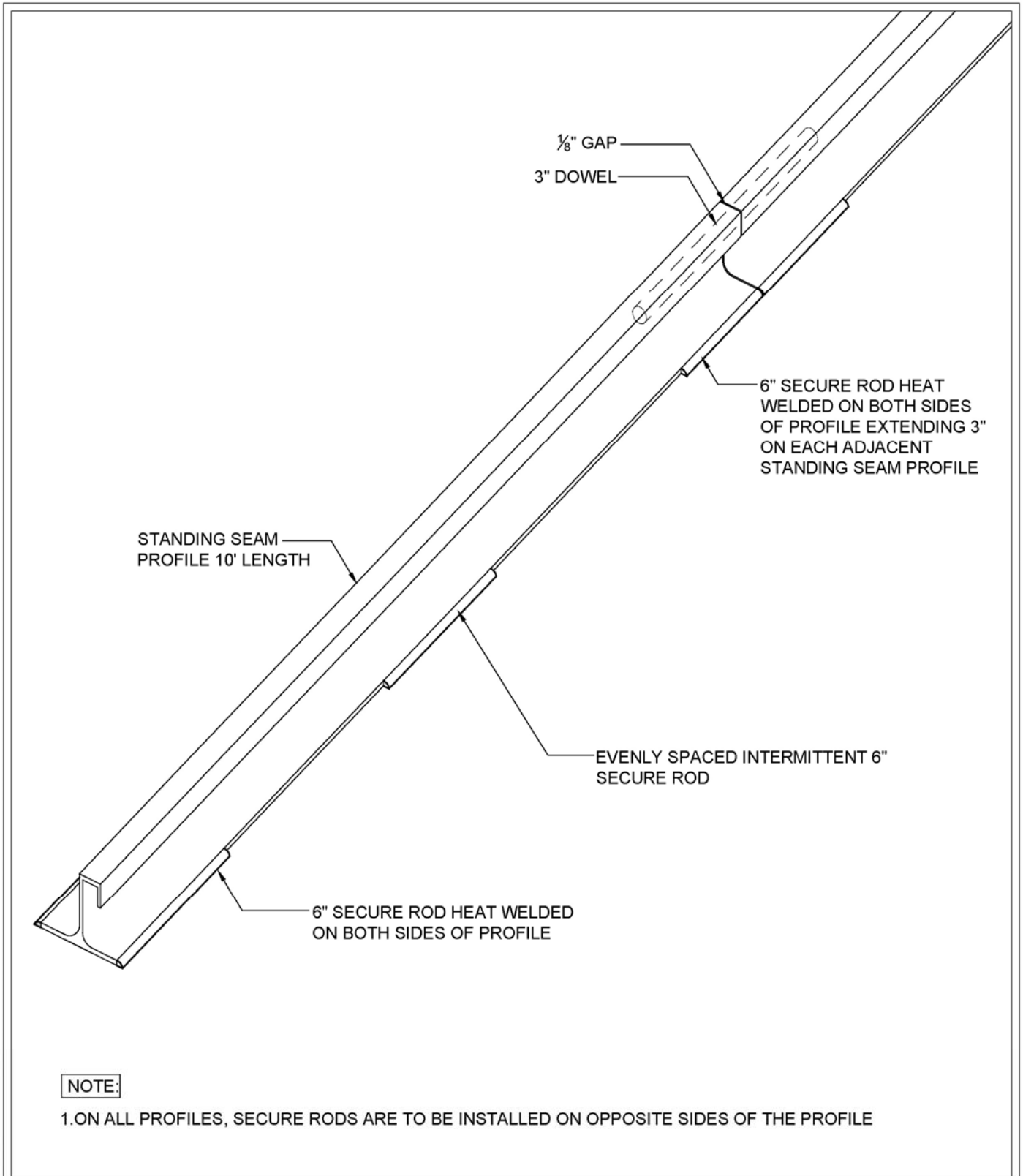
NOTE:

1. TOP OF PROFILE ALWAYS SECURED WITH 6" SECURE ROD OR CONTINUOUS SECURE ROD IF EXTENDED WARRANTY NEEDED

 GAF [®] <small>GAF MATERIALS CORPORATION www.gaf.com</small>	 EverGuard <small>SINGLE-PLY ROOFING SYSTEMS</small>	UPPER PROFILE SECUREMENT	<small>DRAWING #</small> 007	<small>SYSTEM</small> SSP
		<small>ARCHITECTURAL STANDING SEAM PROFILE SERIES</small>	<small>TPO ONLY</small>	<small>SCALE</small> N.T.S.



 GAF MATERIALS CORPORATION www.gaf.com	 ARCHITECTURAL STANDING SEAM PROFILE SERIES	SECURE ROD JUNCTION	DRAWING # 008	SYSTEM SSP
		TPO ONLY	SCALE N.T.S.	ISSUE/ REVISION DATE 3-01-10



 GAF MATERIALS CORPORATION www.gaf.com	 ARCHITECTURAL STANDING SEAM PROFILE SERIES	COMPLETE PROFILE INSTALLATION	DRAWING # 009	SYSTEM SSP
		TPO ONLY	SCALE N.T.S.	ISSUE/ REVISION DATE 3-01-10