

# GAF® Profiles™ Metal-Look TPO Roofing Brochure

Updated: 1/12



*Quality You Can Trust... From  
North America's Largest Roofing Manufacturer!™*

[www.gaf.com](http://www.gaf.com)



ARCHITECTS & PROPERTY OWNERS



“Now, achieve the architectural look of a metal roof...

**without the hassles!”**

**GAF Profiles™ Metal-Look TPO Roofing achieves the look of batten or standing seam metal roofing—with the watertight integrity of heat-welded TPO roofing. The Profiles™ System combines the proven performance of GAF EverGuard® Steep Slope TPO Membranes with EverGuard® Self-Adhering Batten or Standing Seams—to create a look that is virtually indistinguishable from expensive metal roofing.**

#### Benefits for Property Owners

- **Lower Initial Investment...**can save up to 20–30% on initial installed cost versus metal roofing.
- **Low Life Cycle Cost...** EverGuard® Steep Slope TPO Membranes provide proven, long-term watertight protection with no painting required.
- **Fewer Hassles...** Unlike metal roofing, will not rust, corrode, dent, or require regular resurfacing.

- **Looks Great...** GAF Profiles™ Systems are virtually indistinguishable from the “real” thing—only your roofer will know the difference!
- **Superior Color Fastness...** Outperformed factory-painted metal roofing samples in accelerated weathering studies.
- **Quiet Operation...** Unlike metal, TPO roofing systems avoid the noise and annoyance that are obvious during rain storms.
- **Proven Performance...** from GAF, North America’s largest roofing manufacturer.

#### Benefits for Architects & Specifiers

- **Project Savings...** you achieve the architectural look of a batten seam or standing seam roof, while conserving precious project dollars.
- **Design Flexibility...** can be used on a wide variety of roof shapes, sizes, slopes, and radii. Batten seams can accommodate curves as tight as an 8-foot radius.

- **Long-Lasting Formulation...** Batten and standing seams are made from the same semi-rigid thermoplastic base as EverGuard® Membranes for superior compatibility—but are compatible with all brands of TPO membrane.

#### Benefits for Installers

- **Easiest To Install...** Requires traditional TPO installation, plus just 4 easy steps to add the batten or standing seams.
- **Saves Labor...** Self-adhering positioning tape technology allows for fast installation of batten or standing seams.
- **Flexibility...** Customize the color to match your project.
- **Quality You Can Trust...** Up to 20-year manufacturer guarantees available.



## Faster, Easier Installation...

Just install your TPO membrane using conventional installation methods, then add the batten or standing seams to finish the job. EverGuard® Batten or Standing seams with self-adhering technology require just a few easy steps to install. You'll save money by installing up to 3% faster than systems requiring adhesives or primers.



**Step 1 -**  
Install membrane



**Step 2 -**  
Clean membrane



**Step 3 -**  
Establish a guideline



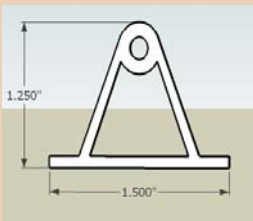
**Step 4 -** Remove tape/  
affix to membrane



**Step 5 -** Permanently  
weld with SecureRod™

## Batten & Standing Seam Specifications...

### Batten Seam Profiles for radial installations



**Material Composition:**  
Semi-rigid thermoplastic

**Adhesive Technology:**  
Self-adhering pressure-sensitive adhesive

**Length:**  
10' (2.39 m) - plastic dowels available to join individual lengths as necessary

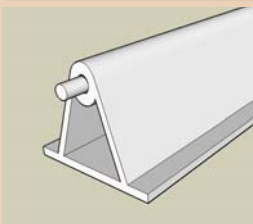
**Height/Width:**  
See drawings above

**Packaging:**  
30 10'-lengths per box

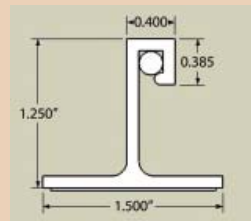
**Max. Roof Pitch:**  
Unlimited

**UV resistant:**  
Yes

**End-joint connection:**  
3" custom plastic dowel (shown above)



### Standing Seam Profiles for lineal installations



**Material Composition:**  
Semi-rigid thermoplastic

**Adhesive Technology:**  
Self-adhering pressure-sensitive adhesive

**Length:**  
10' (2.39 m) - plastic dowels available to join individual lengths as necessary

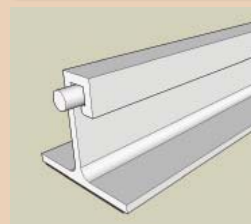
**Height/Width:**  
See drawings above

**Packaging:**  
30 10'-lengths per box

**Max. Roof Pitch:**  
Unlimited

**UV resistant:**  
Yes

**End-joint connection:**  
3" custom plastic dowel (shown above)



**GAF EverGuard® Steep Slope TPO Membranes are specially formulated for Profiles™ Metal-Look Roofing Systems**

**Benefits**

- **Safer...** Formulated with enhanced fire-retardant properties.
- **Superior Color Fastness...** Outperformed factory-painted metal roofing samples in accelerated weathering studies.
- **Meets Code Requirements...** UL Class A rating on slopes of 5/12 and greater (depends on total roof system non-combustible deck).
- **Colors Available\*...** Available in white and a wide assortment of colors.
- **Proven Performance...** from GAF, North America's largest roofing manufacturer.

\*Colors (except white) are available by special order only. Longer lead times and minimum quantities may apply.



**Specifications**

Physical Properties	ASTM Test Method	ASTM 6878 Minimum	EverGuard® Typical Test Data	EverGuard® Typical Test Data
Nominal Thickness	ASTM D-751	0.039" (min.)	0.060"	0.080"
Breaking Strength	ASTM D-751 Grab Method	220 lbf/in.	330 lbf/in. x 310 lbf/in.	360 lbf/in. x 340 lbf/in.
Factory Seam Strength	ASTM D-751	66 lbf	120 lbf (membrane failure)	140 lbf (membrane failure)
Elongation at Break	ASTM D-751	15%	30%	30%
Heat Aging	ASTM D-573	90% Retention of Breaking Strength and Elongation at Break	100%	100%
Tear Strength	ASTM D-751 8" x 8" Sample	55 lbf	70 lbf x 150 lbf	60 lbf x 150 lbf
Puncture Resistance	FTM 101C Method 2031	Not Established	380 lbs.	>380 lbs.
Cold Brittleness	ASTM D-2137	-40 °C	-40 °C	-40 °C
Permeance	ASTM E-96	Not Established	0.01 Perms	0.01 Perms
Dimensional Change	ASTM D-1204 @ 158 °F, 6 hrs.	+/- 1%	0.40%	0.40%
Water Absorption	ASTM D-471 @ 158 °F, 1 week	+/- 3.0% (top coating only)	0.70%	0.70%
Hydrostatic Resistance	ASTM D-751 Method D	Not Established	430 psi	>430 psi
Ozone Resistance	ASTM D-1149	Pass – No visible deterioration @ 7 x magnification	Pass – No visible deterioration @ 7 x magnification	Pass – No visible deterioration @ 7 x magnification
Reflectivity (white)	ASTM C-1549	N/A	0.76	0.76
Emissivity (white)	ASTM C-1371	N/A	0.9	0.9