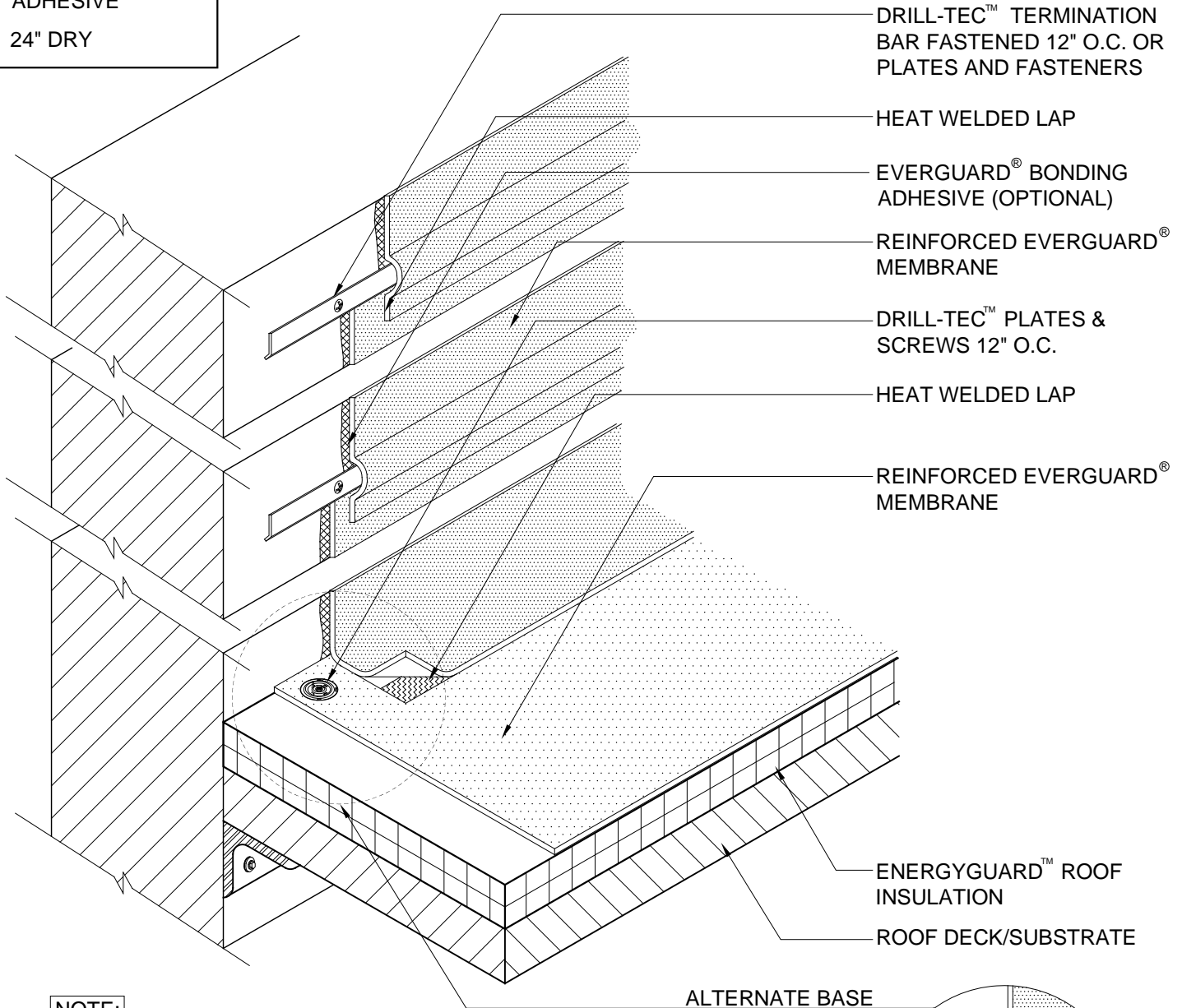


**INTERMITTENT  
FASTENING KEY**

54" WITH BONDING  
ADHESIVE

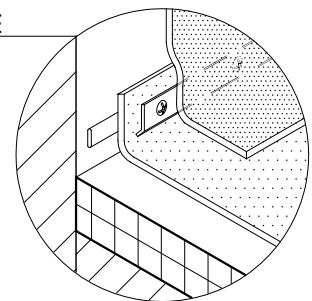
24" DRY



**NOTE:**

1. THE FOLLOWING APPLIES FOR MA SYSTEMS ONLY: FOR INSULATION THICKNESSES GREATER THAN 8", CONTACT GAF CONTRACTOR SERVICES FOR ALTERNATE ATTACHMENT REQUIREMENTS. THESE METHODS MAY INCLUDE THE USE OF A HARD BOARD COVERING THE ASSEMBLY.
2. PLATES & SCREWS 6" O.C. REQ'D FOR BA SYSTEMS.
3. 24" MAX. DIMENSION FOR LOOSE-APPLIED FLASHINGS.
4. 54" MAX. DIMENSION FOR FULLY ADHERED FLASHINGS.
5. APPLY EVERGUARD® TPO AND PVC CUT EDGE SEALANT TO ALL CUT REINFORCED TPO AND PVC EDGES (REFER TO DETAIL MA/FA/BA 115).

ALTERNATE BASE  
REFER TO 307



PARAPET WALL  
& CURB SERIES

**HIGH WALL FLASHING DETAIL**

DRAWING #

306

SCALE

N.T.S.

SYSTEM

MA/FA/BA

ISSUE/REVISION DATE

6-01-10