



# DUCTWORK

Metal ■ Flexible ■ Accessories

## POLICIES AND PROCEDURES

**EFFECTIVE DATE:** March 1, 2007 (replaces all previous)  
**CATALOG NUMBER:** D2007  
**STANDARD DISCOUNTS FROM LIST:** All products 50-10% discount when bought in standard factory packs.  
**TERMS:** Net 30 days... 1/2% LATE CHARGE FOR ALL PAST DUE AMOUNTS.  
**MINIMUM ORDER:** \$100.00 net minimum. A \$10.00 minimum order charge will be added to orders less than \$100.00.  
**PRICING & SPECIFICATIONS:** Prices are F.O.B. point of origin. Prices and product specifications are subject to change without notice. Prices on all shipments to be those in effect at time of shipment.  
**FREIGHT ALLOWANCE (48 Adjacent States):** Under 500 lbs. (all products mixed) - FREIGHT COLLECT. 500 Lbs. (all products mixed) - F.O.B. point of origin, FREIGHT PREPAID.  
**(Alaska, Hawaii & International):** Orders of 500 lbs. or more will be shipped F.O.B. point of origin - FREIGHT PREPAID to any port within the 48 adjacent states. Customer pays freight beyond.  
**PICKUP ALLOWANCE:** Locations 200 miles or less from plant - 2%. More than 200 miles from the plant - 4%  
**FREIGHT CLAIMS:** The customer is responsible for filing claims for shortages or damage in transit, whether visible or concealed. LL Building Products, Inc.'s responsibility ceases when the carrier signs for the shipment in good order.  
**RETURNED GOODS:** Prior approval and Returned Goods Authorization (RGA) Number are required before returning any merchandise. Contact Customer Service Department for approval, instructions, and RGA number. Unauthorized returns will be refused and no credit issued. For approved returns, make certain that the RGA number is clearly visible. All authorized returns are subject to a 25% restocking charge  
**CREDITS:** Credits of any kind must be approved by LL Building Products, Inc. management. Field sales representatives are not authorized to issue credits. Deductions from invoices without reference to an approved credit memo will be disallowed.

FULL TERMS AND CONDITIONS SHALL BE INCLUDED WITH YOUR INVOICE.

## LIMITED WARRANTY

LL Building Products Inc. warrants that, at the time of delivery, its products conform to LL Building Products' specifications therefor. THIS WARRANTY IS EXCLUSIVE AND IS IN LIEU OF ALL OTHER WARRANTIES, EXPRESS OR IMPLIED, INCLUDING ANY IMPLIED WARRANTY OF MERCHANTABILITY OR FITNESS FOR A PARTICULAR PURPOSE. It is Purchaser's sole responsibility to determine the suitability of any LL Building Product for any particular application. Recommendations made by LL Building Products are believed to be reliable, but LL Building Products makes NO WARRANTY OF RESULTS to be obtained. PURCHASER'S SOLE AND EXCLUSIVE REMEDY, regardless of the theory on which a claim may be based, including, without limitation, negligence, contract, breach of warranty, strict product liability or misrepresentation, IS THE REPLACEMENT OF THIS PRODUCT or, in the alternative, the original purchase price of this product, EXCLUDING the costs of labor to remove or reinstall the product or field repair expenses. In NO event shall LL Building Products be liable for INCIDENTAL, CONSEQUENTIAL, SPECIAL, INDIRECT or PUNITIVE DAMAGES.

Purchaser must notify LL Building Products, in writing, of any claim at 295 McKoy Road, Burgaw, NC 28425 within 30 days of discovery of any alleged manufacturing defect. After the product claimed to be defective is inspected by a LL Building Products salesman or official, who authorizes its return, Purchaser must return the product to the factory of original shipment, as part of the claims procedure.

This warranty gives you specific legal rights and you may also have other rights which vary from state to state. Some states do not allow the exclusion or limitation of incidental or consequential damages, so the above limitation or exclusion may not apply to you.

## OTHER FINE PRODUCTS FROM LL BUILDING PRODUCTS, INC.

- Power Attic Ventilators
- Static Ventilation Products
- Ornamental Iron
- Furnace Pipe & Fittings
- Rotary Turbines
- Whole House Fans
- Chimney Caps
- Flexible Duct

Manufactured by  
**LL BUILDING PRODUCTS, INC.**  
 Subsidiary of GAFMC

295 McKoy Road, Burgaw, NC 28425 (910)815-2600 (800)668-8514 FAX: (910)259-7428



SUBSIDIARY OF  
**GAF**  
 GAF MATERIALS CORPORATION  
 FAMILY OF COMPANIES  
 Since 1886...  
 Choice of Professionals

## Contents

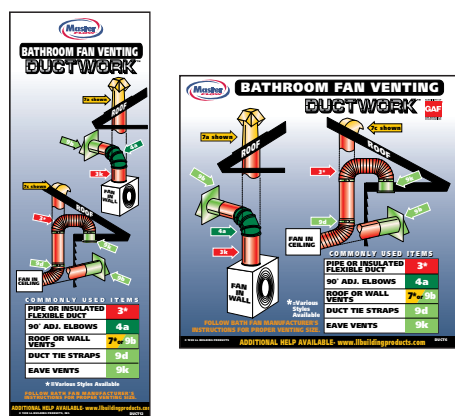
<b>Plenums &amp; Air Returns</b>	<b>3</b>	<b>Register Boxes</b>	<b>11 - 12</b>
<b>Starting Collars and Take-Offs</b>	<b>3 - 4</b>	<b>Rooftop Venting</b>	<b>13 - 15</b>
<b>Trunk and Branch Lines</b>	<b>5 - 6</b>	<b>Heavy Gauge (24 &amp; 26) Systems</b>	<b>15 - 16</b>
<b>Transitions and Connectors</b>	<b>6 - 8</b>	<b>Miscellaneous Items</b>	<b>15 - 19</b>
<b>In Wall Duct Systems</b>	<b>8 - 10</b>	<b>Manufactured Housing Systems</b>	<b>19</b>

Always follow local building codes and wear proper protective equipment when handling and installing ductwork.

## Merchandising, Packaging & Education

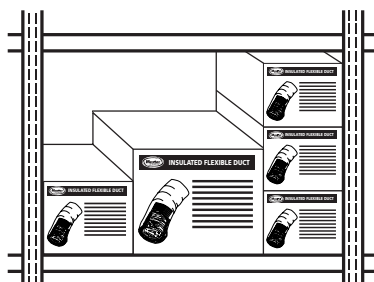
### Signs

Our signs help your customer make the right decision to finish their job. And the color coded system leads the customer right to the color family.



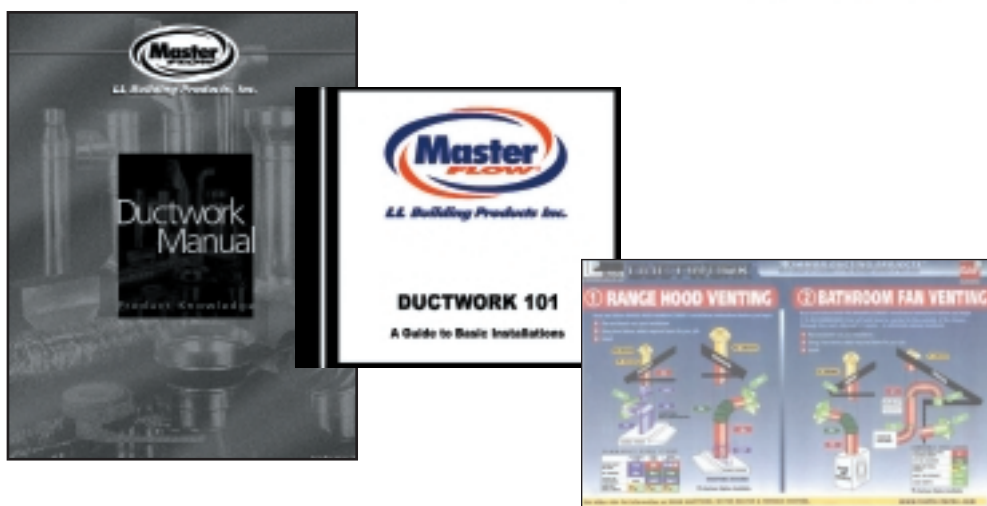
### Packaging

Our attractive cartoning system will improve the look and organization of your aisle display by breaking up the "sea of metal". These boxes allow LL Building Products to fit up to 30% more product in the same space allocated to your current program.



### Education

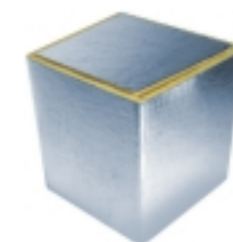
Our easy to use Ductwork manual and DVD will help your store personnel learn how products are used and in turn can lead your customer to the proper item. Education is the key and this manual (available in English and Spanish) acts as a handy reference tool for those "technical questions". We install confidence and your customer installs Ductwork!



## Plenums & Air Returns

This section, color-coded burgundy, includes products that attach directly to the furnace or are used for return air.

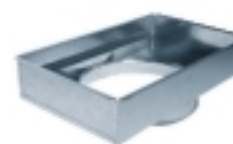
### Ductboard Plenums



- For constructing air supply plenums.
- Pre-cut for easy assembly.
- Secure with approved foil tape.

Model #	Size	R-Value	Thickness	Factory Pack (Wgt. - lbs.)	UPC Item Code (050206)
4DPK24X24X24	24" x 24" x 24"	R-4.2	1"	3 (25.0)	96324 1

### Return Air Boxes



- Provides collecting port for central return duct.

Model #	Size	Depth	Factory Pack (Wgt. - lbs.)	UPC Item Code (050206)
RAB24X14	24" x 14"	3"	4 (18.0)	94810 1

### Galvanized Panning



- To create a run of rectangular duct between studs.
- 30 gauge galvanized steel.

Model #	Size	Factory Pack (Wgt. - lbs.)	UPC Item Code (050206)
GP16X35	16" x 35"	6 (13.7)	93740 2

## Starting Collars and Take-Offs

This section, color-coded orange, includes round and rectangular starting collars and take-offs.

### Click Starting Collars - Deluxe



- For transition from internally lined 1" or 1 1/2" ductboard plenums to round pipe or insulated flexible duct. Can also be used with unlined plenums.
- Snap together.

Model #	Diameter	Factory Pack (Wgt. - lbs.)	UPC Item Code (050206)
SCF4	4"	12 (4.0)	93140 0
SCF5	5"	12 (4.9)	93150 9
SCF6	6"	24 (10.0)	93160 8
SCF7	7"	12 (6.3)	93170 7
SCF8	8"	12 (7.5)	93180 6
SCF10	10"	6 (5.0)	93190 5
SCF12	12"	6 (6.0)	93200 1
SCF14	14"	6 (7.0)	93210 0

### Ductboard Starting Collars



- For transition from ductboard plenums, internally lined plenums or insulated register boxes to round pipe or insulated flexible duct. Can also be used with unlined plenums.
- Extra long tabs to fit all ductboard thicknesses through 1 1/2" (R-6.0 value)

Model #	Diameter	Factory Pack (Wgt. - lbs.)	UPC Item Code (050206)
DSCF4	4"	6 (2.0)	93144 8
DSCF5	5"	6 (3.0)	93154 7
DSCF6	6"	20 (13.4)	93164 6
DSCF7	7"	8 (6.6)	93174 5
DSCF8	8"	14 (11.6)	93184 4
DSCF10	10"	6 (7.8)	93194 3
DSCF12	12"	6 (9.3)	93204 9
DSCF14	14"	6 (10.0)	93224 7

## Starting Collars and Take-Offs

This section, color-coded orange, includes round and rectangular starting collars and take-offs.

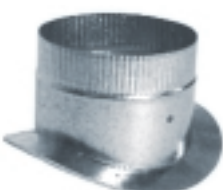
### Air-Tite Take-Offs



- Provides transition from flat surface to insulated flexible duct or round pipe.
- Tacky gasket provides excellent seal.

Model #	Diameter	Factory Pack (Wgt. - lbs.)	UPC Item Code (050206)
ATTO6	6"	10 (7.5)	93240 7
ATTO8	8"	7 (8.0)	93242 1
ATTO10	10"	6 (8.0)	93244 5
ATTO12	12"	6 (9.5)	93246 9

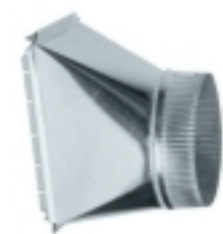
### Saddle Air-Tite Take-Offs



- Provides transition from round surface to insulated flexible duct or round pipe.
- Tacky gasket provides excellent seal.

Model #	Diameter	Factory Pack (Wgt. - lbs.)	UPC Item Code (050206)
SATTO6	6"	10 (7.5)	93262 9

### Side Take-Offs



- For transition from air plenums or rectangular duct to round pipe or insulated flexible duct.
- Crimped collars for interlocking fit.

Model #	Diameter	Factory Pack (Wgt. - lbs.)	UPC Item Code (050206)
STO6	6"	10 (9.0)	93094 6

### Top Take-Offs



- For transition from air plenums or rectangular duct to round pipe or insulated flexible duct.
- RSC is a "Scotty" take off.

Model #	Diameter	Factory Pack (Wgt. - lbs.)	UPC Item Code (050206)
TTO6	6"	12 (14.0)	93114 1
RSC7X6	6"	6 (7.0)	93166 0

### Rectangular Take-Offs - Straight



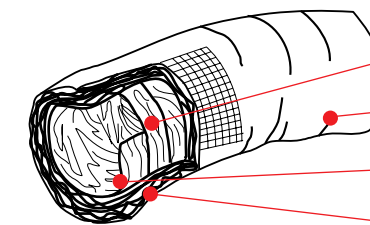
- For transition from plenums to rectangular duct.

Model #	Diameter	Factory Pack (Wgt. - lbs.)	UPC Item Code (050206)
RTO12X8	12" x 8"	6 (8.5)	93122 6
RTO14X8	14" x 8"	6 (9.5)	93123 3
RTO16X8	16" x 8"	6 (10.0)	93124 0

## Trunk and Branch Lines

This section, color-coded red, includes insulated flexible duct, round pipe and rectangular duct.

### Insulated Flexible Duct



**CORE** - 2-ply continuous inner core products. Smooth interior for more efficient air movement.

**VAPOR BARRIER** - Durable, scuff resistant jacket.

**HELIX** - Zinc coated, high carbon steel wire helix.

**INSULATION** - Thick, continuous blanket of glass fiber insulation

#### PERFORMANCE DATA:

- R-VALUE:** As measured per the ADC test method and ASTM C518
- MAXIMUM FLAME SPREAD:** 25
- MAXIMUM SMOKE DEVELOPED:** 50
- TEMPERATURE RANGE:** -20°F to 250°F
- CORE:** Two plies of polyester film which encapsulate galvanized steel wire helix
- THERMAL CONDUCTANCE:** C = 23
- VELOCITY:** 4,000 FPM maximum

- Approval codes:
- Meets UL - 181 Class 1 Air Duct
  - NFPA 90A + 90B
  - SBCC, ICBO, BOCA
  - California Bureau of Home Furnishing & Thermal Insulation

Model # Series	Vapor Barrier	R-Value	Glass Fiber Insulation	Indoor Use	Outdoor Use
F6IFD	Metalized single strand fiberglass yarns for added strength and tear resistance	6.0	2" thick	x	--
8IFD	Durable black polyethylene jacket with UV inhibitors	8.0	3" thick	x	--
MIF	Extra heavy black polyethylene jacket with UV inhibitors	4.2	1 1/4" thick	x	x

### Metalized Jacket R6.0 Insulated Flexible Duct



- Metalized jacket.
- 2" glass fiber R-Value 6.0

Model #	Description	Factory Pack (Wgt. - lbs.)	UPC Item Code (050206)
F6IFD4X300	4" Diam. - 25 ft. Metalized	1 (10.0)	92206 4
F6IFD5X300	5" Diam. - 25 ft. Metalized	1 (11.5)	92214 9
F6IFD6X300	6" Diam. - 25 ft. Metalized	1 (11.5)	92224 8
F6IFD7X300	7" Diam. - 25 ft. Metalized	1 (12.5)	92234 7
F6IFD8X300	8" Diam. - 25 ft. Metalized	1 (13.0)	92244 6
F6IFD10X300	10" Diam. - 25 ft. Metalized	1 (16.0)	92254 5
F6IFD12X300	12" Diam. - 25 ft. Metalized	1 (19.0)	92264 4
F6IFD14X300	14" Diam. - 25 ft. Metalized	1 (26.0)	92274 3

### Black Jacket R8.0 Insulated Flexible Duct



- Black polyethylene jacket.
- 3" glass fiber R-Value 8.0

Model #	Description	Factory Pack (Wgt. - lbs.)	UPC Item Code (050206)
8IFD4X300	4" Diam. - 25 ft. Black	1 (12.0)	92152 4
8IFD6X300	6" Diam. - 25 ft. Black	1 (13.8)	98652 3
8IFD7X300	7" Diam. - 25 ft. Black	1 (15.0)	98654 7
8IFD8X300	8" Diam. - 25 ft. Black	1 (17.5)	98656 1
8IFD10X300	10" Diam. - 25 ft. Black	1 (22.5)	98658 5
8IFD12X300	12" Diam. - 25 ft. Black	1 (26.3)	98660 8

## Trunk and Branch Lines

This section, color-coded red, includes insulated flexible duct, round pipe and rectangular duct.

### Round Metal Pipe



- Snap lock design.
- Crimped end with stop-bead for easy interlocking fit.
- Galvanized steel construction.
- Cut to length with tin snips.

**NOTE:** For heavy (24 or 26 gauge) pipe, see Heavy Gauge Section - page 15.

### 2 Foot Sections: 30 Gauge

Model #	Diameter	Factory Pack (Wgt. - lbs.)	UPC Item Code (050206)
BCP3X24	3"	20 (17.5)	92010 7
BCP4X24	4"	20 (21.0)	92020 6
BCP5X24	5"	20 (24.0)	92030 5
BCP6X24	6"	20 (30.0)	92040 4
BCP7X24	7"	20 (32.0)	92050 3
BCP8X24	8"	20 (40.0)	92060 2

### 3 Foot Sections: 30 Gauge

Model #	Diameter	Factory Pack (Wgt. - lbs.)	UPC Item Code (050206)
BCP3X36	3"	20 (28.4)	92140 1
BCP4X36	4"	20 (36.4)	92150 0
BCP5X36	5"	20 (44.4)	92070 1
BCP6X36	6"	20 (52.4)	92160 9
BCP7X36	7"	20 (60.2)	92170 8
BCP8X36	8"	20 (68.2)	92180 7
CP10X36	10"	10 (42.0)	92012 1
CP12X36	12"	10 (50.0)	92022 0

### 5 Foot Sections: 30 & 28 Gauge

Model #	Gauge	Diam.	Factory Pack (Wgt. - lbs.)	UPC Item Code (050206)
CP3X60	30	3"	10 (24.0)	92080 0
CP4X60	30	4"	10 (31.0)	92090 9
CP5X60	30	5"	10 (36.0)	92100 5
CP6X60	30	6"	10 (42.0)	92110 4
CP7X60	30	7"	10 (52.0)	92120 3
CP8X60	30	8"	10 (58.0)	92130 2
CP10X60	30	10"	10 (74.0)	92014 5
CP12X60	28	12"	10 (96.0)	92024 4
CP14X60	28	14"	10 (132.0)	92034 3

### Rectangular Duct



- Main trunk lines for system supply.
- Snaps together - no tools needed.
- Notched corners for connecting sections, or use cleats.
- 28 gauge galvanized steel.

**SOLD IN HALF SECTIONS**  
For "S" and Drive Cleats see page 18.

Model #	Length	Size	Factory Pack (Wgt. - lbs.)	UPC Item Code (050206)
RD12X8X48	4 ft.	12" x 8"	6 (34.0)	95010 4
RD14X8X48	4 ft.	14" x 8"	6 (37.0)	95015 9
RD16X8X48	4 ft.	16" x 8"	6 (39.0)	95020 3
RD24X8X48	4 ft.	24" x 8"	6 (48.0)	95030 2

## Transitions and Connectors

This section, color-coded dark green, includes elbows, reducers, tees, wyes and other accessories.

### Standard 90 Degree Round Adjustable Elbows



- Used to make angular turns in runs of pipe.
- Adjustable to any angle through 90°.

**NOTE:** For heavy gauge 90 degree Elbows, see page 15.

Model #	Diameter	Factory Pack (Wgt. - lbs.)	UPC Item Code (050206)
B90E3	3"	24 (9.6)	92300 9
B90E4	4"	24 (12.0)	92310 8
B90E5	5"	24 (17.5)	92320 7
B90E6	6"	24 (21.0)	92330 6
90E7	7"	12 (14.0)	92340 5
90E8	8"	12 (17.0)	92350 4
90E10	10"	12 (35.0)	93360 3
90E12	12"	6 (21.0)	93370 2

## Transitions and Connectors

This section, color-coded dark green, includes elbows, reducers, tees, wyes and other accessories.

### Round Reducer/Incraser



- Used to reduce or increase diameter of pipe.
- Collar edges hemmed for added strength and safety.

**NOTE:** For 26 gauge reducer/ increasers, see page 16.

Model #	Diameter	Factory Pack (Wgt. - lbs.)	UPC Item Code (050206)
R4X3	4" to 3"	24 (8.0)	92550 8
R5X4	5" to 4"	12 (5.5)	92560 7
R6X4	6" to 4"	12 (6.5)	92570 6
R6X5	6" to 5"	12 (7.5)	92580 5
R7X4	7" to 4"	12 (7.5)	92598 0
R7X6	7" to 6"	12 (7.5)	92590 4
R8X6	8" to 6"	12 (9.5)	92600 0
R8X7	8" to 7"	12 (9.5)	92630 7
R10X8	10" to 8"	6 (5.5)	92610 9
R12X10	12" to 10"	6 (8.3)	92620 8
R14X12	14" to 12"	6 (12.5)	92640 6

### Standard "Stub" Wyes



- Also called Wye Joints or Reducing Laterals.
- Used primarily for heating & air conditioning application for transition from one pipe to two pipes.

Model #	Diameter	Factory Pack (Wgt. - lbs.)	UPC Item Code (050206)
Y4X4X4	4" to 4" x 4"	6 (8.3)	92508 9
Y6X6X6	6" to 6" x 6"	6 (12.0)	92518 8
Y8X6X6	8" to 6" x 6"	6 (12.3)	92510 2
Y8X8X8	8" to 8" x 8"	6 (12.3)	92514 0
Y10X8X8	10" to 8" x 8"	4 (14.0)	92520 1
Y12X10X10	12" to 10" x 10"	4 (16.0)	92532 4
Y14X12X10	14" to 12" x 10"	6 (22.5)	92540 9

### Round Tees

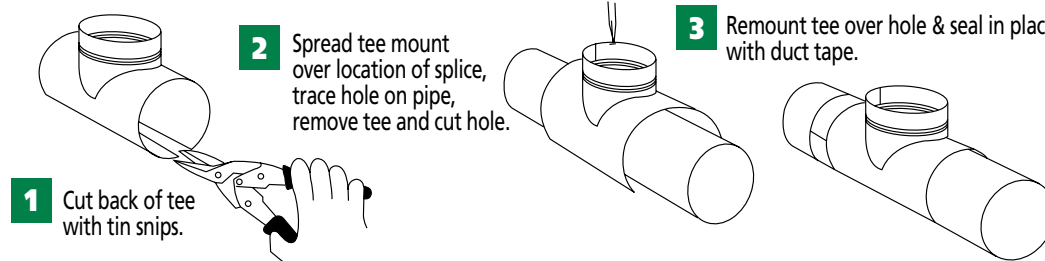


- Used for venting bath & kitchen fans as well as heating & air conditioning applications.
- For 90 degree branch with same diameters.
- Use reducers/increasers to modify multiple pipe size connections.
- (28 gauge for 10" diameters & larger)

**NOTE:** For 26 gauge tees, see page 16.

Model #	Diameter	Factory Pack (Wgt. - lbs.)	UPC Item Code (050206)
T3X3X3	3"	6 (3.5)	92410 5
T4X4X4	4"	6 (4.0)	92420 4
T5X5X5	5"	6 (7.0)	92430 3
T6X6X6	6"	6 (7.0)	92440 2
T8X8X8	8"	6 (10.3)	92460 0
T10X10X10	10"	6 (16.5)	92470 9
T12X12X12	12"	6 (22.0)	92480 8

**NOTE:** 90 degree Tee Saddles can be made from Standard Tees as shown:



### Tee Saddles



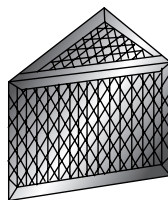
- Used to splice into an existing run of round pipe of equal or large diameter.
- 90 degree angle branch.

Model #	Size	Factory Pack (Wgt. - lbs.)	UPC Item Code (050206)
TS6	6" to 6"	6 (4.5)	92490 7
TS8X6	8" to 6"	6 (5.5)	92500 3

## Transitions and Connectors

This section, color-coded dark green, includes elbows, reducers, tees, wyes and other accessories.

### Ductboard Triangular Terminal Boxes



- Pre-cut for easy assembly using approved foil tape.
- FSK reinforced backing.

Model #	R-Value	Size	Factory Pack (Wgt. - lbs.)	UPC Item Code (050206)
DTTB15	R-6.0	15"	6 (18.0)	96320 3

## In Wall Duct Systems

This section, color-coded purple, includes rectangular stack (riser) and oval duct components

### Rectangular Stack (Riser) Duct

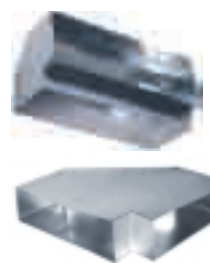


- For use between wall studs for venting:
  - Kitchen & bath fans
  - Range hoods;
  - Heating & air conditioning supply & return ducts.
- Snap together - no tools needed.
- Can be cut to length with tin snips.

**SOLD IN HALF SECTIONS**  
For "S" and Drive Cleats see page 18.

Model #	Length	Dimensions	Factory Pack (Wgt. - lbs.)	UPC Item Code (050206)
RD2.25X12X24	2 ft.	2 1/4" x 12"	12 (13.0)	92185 2
RD3.25X10X36	3 ft.	3 1/4" x 10"	18 (30.0)	92190 6
RD3.25X12X36	3 ft.	3 1/4" x 12"	12 (23.0)	92196 8
RD3.25X14X36	3 ft.	3 1/4" x 14"	12 (27.3)	92200 2
RD3.25X10X60	5 ft.	3 1/4" x 10"	12 (38.0)	92194 4
RD3.25X12X60	5 ft.	3 1/4" x 12"	12 (40.0)	92174 6
RD3.25X14X60	5 ft.	3 1/4" x 14"	12 (48.0)	92204 0

### Rectangular Stack Elbows



- Used with rectangular stack duct for 90 degree turns.
- Available in short way and long way configurations.

Model #	Size and Configuration	Factory Pack (Wgt. - lbs.)	UPC Item Code (050206)
90E3.25X10	3 1/4" x 10" Short	6 (6.0)	92380 1
90E3.25X12	3 1/4" x 12" Short	6 (7.0)	92382 5
LW90E10X3.25	10" x 3 1/4" Long	6 (9.0)	92390 0

### Rectangular Stack Heads



- For transition from rectangular stack duct to air register or grill (normally side wall registers).
- "SHW" model includes tabs for easy joist attachment.

Model #	Stack Duct Dimensions	Register Size	Factory Pack (Wgt. - lbs.)	UPC Item Code (050206)
SH10X6	3 1/4" x 10"	10" x 6"	8 (12.0)	93270 4
SH14X6	3 1/4" x 14"	14" x 6"	5 (9.4)	93290 2
SHW12X6 (w/tabs)	2 1/4" x 12"	12" x 6"	12 (17.4)	933265 0

### Stack Boots - Straight



- For straight line transition from round pipe or insulated flexible duct to rectangular stack duct.

Model #	Pipe Diameter	Stack Duct Dimensions	Factory Pack (Wgt. - lbs.)	UPC Item Code (050206)
SB12X2.25X6	6"	12" x 2 1/4"	12 (16.8)	93080 9
SB10X3.25X4	4"	10" x 3 1/4"	16 (17.5)	93002 1
SB10X3.25X5	5"	10" x 3 1/4"	14 (15.0)	93012 0
SB10X3.25X6	6"	10" x 3 1/4"	12 (13.0)	92990 2
SB10X3.25X7	7"	10" x 3 1/4"	10 (10.2)	93000 7

## In Wall Duct Systems

This section, color-coded purple, includes rectangular stack (riser) and oval duct components

### Stack Boots - 90 Degree



- For right angle transition from round pipe or insulated flexible duct to rectangular stack duct.

Model #	Pipe Diameter	Stack Duct Dimensions	Factory Pack (Wgt. - lbs.)	UPC Item Code (050206)
90SB10X3.2X6	6"	10 x 3 1/4"	9 (11.0)	93040 3

### Rectangular Stack Duct Caps



- Used to terminate or block off a run of rectangular stack duct.

Model #	Size	Factory Pack (Wgt. - lbs.)	UPC Item Code (050206)
DC3.25X10	3 1/4" x 10"	6 (1.2)	93712 9
DC3.25X12	3 1/4" x 12"	6 (1.3)	93714 3

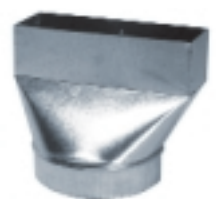
### Rectangular Stack Duct Starting Collars



- For transition from plenum or flat surface to stack duct.

Model #	Size	Factory Pack (Wgt. - lbs.)	UPC Item Code (050206)
SCF3.25X10	3 1/4" x 10"	6 (6.0)	93230 8

### Fan Boots



- For transition from Range Hood Top 3 1/4" x 10" opening to round pipe.
- Crimped collar.

Model #	Size	Factory Pack (Wgt. - lbs.)	UPC Item Code (050206)
FB3.25X10X7	7"	12 (14.5)	93652 8

### Oval Pipe



- For use between walls for supplying air to high wall registers or to other floors.
- Efficient alternative to rectangular stack (riser) duct.

Model #	Size	Factory Pack (Wgt. - lbs.)	UPC Item Code (050206)
OP6X60	6" x 5 ft.	10 (43.0)	98500 7

### Oval 90 Degree Vertical Elbows



- For changing the vertical direction of a run of oval pipe.

Model #	Fits Pipe Diameter	Factory Pack (Wgt. - lbs.)	UPC Item Code (050206)
OV90E6	6"	12 (8.7)	98520 5

## In Wall Duct Systems

This section, color-coded purple, includes rectangular stack (riser) and oval duct components

### Oval 90 Degree Flat Elbows



- For changing the horizontal direction of a run of oval pipe.

Model #	Fits Pipe Diameter	Factory Pack (Wgt. - lbs.)	UPC Item Code (050206)
OF90E6	6"	12 (10.5)	98530 4

### Oval Stack Heads With Wings



- Provide right angle transition from oval pipe to side wall register.
- Built-in wings for easy attachment to wall studs.

Model #	Oval Size	Factory Pack (Wgt. - lbs.)	UPC Item Code (050206)
OSHW10X6X6	10" x 6" to 6"	8 (11.0)	98540 3
OSHW12X6X6	12" x 6" to 6"	6 (8.9)	98550 2

### Oval To Round Boots - Straight



- Provide straight transition from round pipe or insulated flexible duct to oval pipe.

Model #	Oval to Round Size	Factory Pack (Wgt. - lbs.)	UPC Item Code (050206)
OTRB6	6" to 6"	8 (6.6)	98560 1

### Oval To Round Boots - 90 Degree



- Provide right angle transition from round pipe or insulated flexible duct to oval pipe.

Model #	Oval to Round Size	Factory Pack (Wgt. - lbs.)	UPC Item Code (050206)
OTR90B6	6" to 6"	10 (9.5)	98570 0

### Oval To Round Boots - End



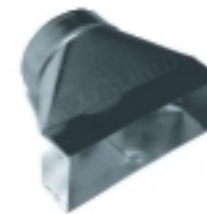
- For transition from round pipe or insulated flexible duct to oval pipe.

Model #	Oval to Round Size	Factory Pack (Wgt. - lbs.)	UPC Item Code (050206)
OTREB6	6" to 6"	8 (5.4)	98580 9

## Register Boxes

This section, color-coded blue, includes all styles and configurations of register boxes.

### Universal (Straight) Register Boxes



- For transition from round pipe or insulated flexible duct to air register or grill.

Model #	Register Size	Pipe Diameter	Factory Pack (Wgt. - lbs.)	UPC Item Code (050206)
RB8X4X5	8" x 4"	5"	10 (7.0)	92744 1
RB8X8X6	8" x 8"	6"	6 (7.5)	92646 8
RB10X2.25X6	10" x 2 1/4"	6"	6 (7.0)	92650 5
RB12X2.25X6	12" x 2 1/4"	6"	6 (7.0)	92660 4
RB10X4X4	10" x 4"	4"	12 (12.5)	92674 1
RB10X4X5	10" x 4"	5"	12 (14.0)	92676 5
RB10X4X6	10" x 4"	6"	12 (14.5)	92680 2
RB10X6X6	10" x 6"	6"	14 (14.0)	92690 1
RB10X10X8	10" x 10"	8"	6 (9.4)	92644 4
RB12X4X5	12" x 4"	5"	9 (9.0)	92704 5
RB12X4X6	12" x 4"	6"	9 (13.0)	92700 7
RB12X6X6	12" x 6"	6"	6 (9.0)	92710 6
RB14X6X8	14" x 6"	8"	8 (12.8)	92740 3
RB14X8X8	14" x 8"	8"	10 (17.5)	92742 7

### 90 Degree Register Boxes



- For right angle transition from round pipe or insulated flexible duct to air register or grill.

Model #	Register Size	Pipe Diameter	Factory Pack (Wgt. - lbs.)	UPC Item Code (050206)
90RB12X2.2X6	12" x 2 1/4"	6"	6 (10.0)	92760 1
90RB10X4X5	10" x 4"	5"	10 (16.0)	92774 8
90RB10X4X6	10" x 4"	6"	10 (16.3)	92780 9
90RB10X6X6	10" x 6"	6"	8 (14.0)	92790 8
90RB12X4X5	12" x 4"	5"	9 (14.8)	92808 0
90RB12X4X6	12" x 4"	6"	9 (15.3)	92800 4
90RB12X6X6	12" x 6"	6"	7 (12.8)	92810 3

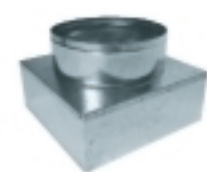
### End Register Boxes



- For right angle center-end transition from round pipe or insulated flexible duct to air register or grill.

Model #	Register Size	Pipe Diameter	Factory Pack (Wgt. - lbs.)	UPC Item Code (050206)
ERB10X2.25X6	10" x 2 1/4"	6"	6 (7.5)	92860 8
ERB12X2.25X6	12" x 2 1/4"	6"	6 (8.8)	92870 7
ERB10X4X5	10" x 4"	5"	6 (6.5)	92876 9
ERB10X4X6	10" x 4"	6"	6 (7.0)	92862 2
ERB10X6X6	10" x 6"	6"	6 (8.0)	92872 1
ERB12X4X6	12" x 4"	6"	6 (8.3)	92880 6

### Ceiling Register Boxes



- For transition from round pipe or insulated flexible duct to air register or grill.

Model #	Register Size	Pipe Diameter	Factory Pack (Wgt. - lbs.)	UPC Item Code (050206)
CRB6X6X6	6" x 6"	6"	6 (6.0)	94505 6
CRB10X10X8	10" x 10"	8"	6 (9.0)	94532 2

## Register Boxes

This section, color-coded blue, includes all styles and configurations of register boxes.

### Insulated Register Boxes



- For transition from round pipe or flexible duct to air register or grill.
- Insulated. . .no need to wrap. Insulation serves as noise deadener and helps control condensation.
- 1" fiberglass insulation inside lining with vapor barrier.

Model #	Register Size	Pipe Diameter	Factory Pack (Wgt. - lbs.)	UPC Item Code (050206)
IRB8X4X4	8" x 4"	4"	6 (9.8)	92910 0
IRB8X4X5	8" x 4"	5"	6 (9.8)	92912 4
IRB10X6X6	10" x 6"	6"	8 (18.0)	92970 4
IRB12X6X6	12" x 6"	6"	8 (19.0)	92980 3
IRB12X6X7	12" x 6"	7"	6 (14.3)	92930 8
IRB12X6X8	12" x 6"	8"	6 (14.3)	92950 6
IRB14X6X8	14" x 6"	8"	5 (13.3)	92960 5

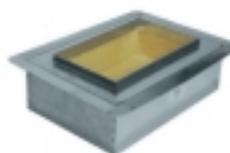
### Register Box Saddles



- Horizontal transition from round pipe to air register or grill.
- Can be cut down if necessary.

Model #	Register Size	Factory Pack (Wgt. - lbs.)	UPC Item Code (050206)
RBS10X4	10" x 4"	6 (8.0)	93942 0
RBS12X4	12" x 4"	6 (9.5)	93944 4

### Ductboard Insulated Register Boxes



- 1 3/8" ductboard insulation R value 6.0.
- For transition from round pipe or flexible duct to air register or grill.
- Pre-insulated...no need to wrap.
- Insulation serves as noise deadener and helps control condensation.

Model #	Register Size	Factory Pack (Wgt. - lbs.)	UPC Item Code (050206)
DIRB6X6	6" x 6"	9 (18.8)	92894 3
DIRB8X4	8" x 4"	12 (24.8)	92914 8
DIRB8X8	8" x 8"	9 (25.4)	92904 9
DIRB10X6	10" x 6"	6 (17.0)	92974 2
DIRB10X8	10" x 8"	6 (19.9)	93018 2
DIRB10X10	10" x 10"	6 (22.8)	92994 0
DIRB12X6	12" x 6"	6 (19.0)	92984 1
DIRB12X8	12" x 8"	6 (22.5)	92954 4
DIRB12X12	12" x 12"	4 (17.0)	92944 5

### Snap On Rails for register box



- Easy method to attach flanged register boxes to joists of other nailing surfaces.

Model #	Size	Factory Pack (Wgt. - lbs.)	UPC Item Code (050206)
6SOR24	24" length	6 (18.0)	92966 7

### Universal (Straight) Register Boxes with Flange



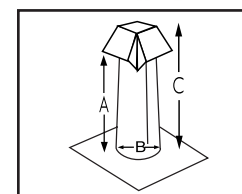
- For transition from round pipe or insulated flexible duct to air register or grill.
- Built-in flange to provide:
  - Area for register screws, sheet rock frame, nailing area for joists.
  - Ability to install box before drywalling.

Model #	Register Size	Pipe Diameter	Factory Pack (Wgt. - lbs.)	UPC Item Code (050206)
RBF8X4X6	8" x 4"	6"	6 (8.0)	93852 2
RBF10X4X6	10" x 4"	6"	12 (17.5)	93850 8
RBF10X6X6	10" x 6"	6"	12 (17.0)	93860 7
RBF12X4X6	12" x 4"	6"	6 (11.0)	93870 6
RBF12X6X6	12" x 6"	6"	5 (8.5)	93880 5
RBF12X12X8	12" x 12"	8"	6 (15.5)	93910 9
RBF14X6X7	14" x 6"	7"	6 (13.0)	93892 8
RBF14X6X8	14" x 6"	8"	4 (8.7)	93890 4
RBF14X8X8	14" x 8"	8"	7 (14.5)	93900 0

## Roof Top Venting

This section, color-coded yellow, includes all products installed on or above the roof.

### Roof Jacks with Vent Caps



- Available in 28 and 26 gauge galvanized steel.
- Used to receive and cover venting duct pipe from kitchen & bath fans, and for attic ventilation.
- Built-in roof flashing -- press sealed design for maximum leak protection.
- Made for 4/12 roof pitch. Adapts to roof pitches from 3/12 to 5/12. Exception no pitch models.
- Includes cap for rain, snow and debris protection.

#### 28 GAUGE

Model #	Fits Pipe Diam.	Base Size	DIMENSIONS			Factory Pack (Wgt. - lbs.)	UPC Item Code (050206)
			A	B	C		
RJVC3	3"	12" x 12"	8.5"	5.125"	10.25"	6 (13.8)	93600 9
RJVC4	4"	13" x 13"	8.125"	6.125"	10.25"	6 (15.0)	93610 8
RJVC6	6"	15" x 15"	8.25"	8.125"	10.75"	6 (21.5)	93630 6
RJVC7	7"	15" x 15"	6.625"	8.125"	9"	6 (24.0)	93640 5
RJVC8	8"	18" x 18"	9.75"	10.125"	12.5"	6 (29.0)	93650 4

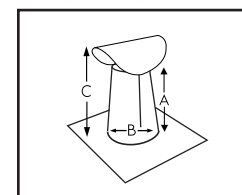
#### 26 GAUGE

26RJVC4	4"	13" x 13"	8.125"	6.125"	10.125"	6 (16.0)	93602 3
26RJVC5	5"	15" x 15"	8.825"	7.125"	10.5"	6 (18.0)	93606 1
26RJVC6	6"	15" x 15"	8.25"	8.125"	10.75"	6 (22.0)	93608 5
26APV10	10"	16" x 16"	10 3/8"	9 7/8"	12"	6 (27.0)	94325 0

#### 26 GAUGE - FLAT

F26RJVC4	4"	13" x 13"	7.625"	7.125"	10.125"	6 (16.0)	93618 4
F26RJVC5	5"	15" x 15"	8.125"	7.125"	9.875"	6 (18.0)	93626 9
F26RJVC6	6"	15" x 15"	8.25"	8.125"	10.75"	6 (22.0)	93628 3
F26APV10	10"	16" x 16"	10"	9 7/8"	11 3/4"	10 (40.5)	00203 2

### Roof Jacks with Wagon Caps

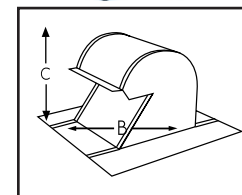


- Used to receive and cover venting duct pipe from kitchen & bath fans, and for attic ventilation.
- Built-in roof flashing -- press sealed design for maximum leak protection.
- Made for 4/12 roof pitch. Tapered stack adapts to roof pitches from 3/12 to 5/12.
- Includes cap for rain, snow and debris protection.

#### 28 GAUGE

Model #	Fits Pipe Diam.	Base Size	DIMENSIONS			Factory Pack (Wgt. - lbs.)	UPC Item Code (050206)
			A	B	C		
RJWC4	4"	13" x 13"	6.875"	6.125"	8.5"	6 (11.5)	93980 2
RJWC7	7"	15" x 15"	6.375"	8.125"	9.75"	6 (16.0)	93990 1

### Goose Neck Vents



- GALVANIZED**
  - Heavy duty screen for small animal protection.
  - Works well on all pitched roofs.
  - Ample flashing for leak protection.
- ALUMINUM/BLACK**
  - Heavy duty screen for small animal protection.
  - Great for appliance venting.
  - Includes Damper.

#### 26 GAUGE GALVANIZED

Model #	Fits Pipe Diam.	Base Size	DIMENSIONS		Factory Pack (Wgt. - lbs.)	UPC Item Code (050206)
			B	C		
GNV4	4"	11.625" x 9.12"	4.125" x 6.5"	6.375"	6 (9.8)	93604 7
GNV6	6"	11.75" x 11.25"	6.125" x 6.625"	6.25"	6 (10.5)	93614 6
GNV10	10"	16" x 16"	10" x 10"	8.75"	6 (22.5)	93644 4

#### Kitchen/Bath Exhaust Vents Aluminum

GNV4A	4"	9" x 12"	4" Round	6"	6 (3.9)	00232 2
GNV10A	10"	16" x 12"	10" Round	7.75"	6 (12.0)	00549 1

#### Galvanized - Black

GNV4BL	4"	9" x 12"	4" Round	6"	6 (8.4)	00547 7
GNV10BL	10"	16" x 12"	10" Round	7.75"	6 (14.5)	00548 4



## Roof Top Venting

This section, color-coded yellow, includes all products installed on or above the roof.

### Vent Caps



- To cap pipes through roof for rain, snow, and debris protection.

30 GAUGE			
Model #	Diameter	Factory Pack (Wgt. - lbs.)	UPC Item Code (050206)
VC3	3"	15 (8.7)	93510 1
VC4	4"	10 (7.5)	93520 0
VC5	5"	10 (7.5)	93530 9
VC6	6"	7 (7.5)	93540 8
VC7	7"	6 (6.6)	93550 7
VC8	8"	6 (12.3)	93560 6

### Adjustable Versa Caps



- Recommended for flue, hot stack or B-vent installations.
- Non-clogging positive draft design.
- Clamp fittings adjustable for all standard sizes.
- Aluminum or galvanized construction.



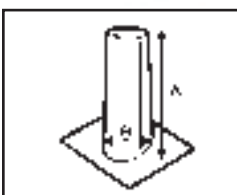
UL Listed for aluminum models.

Model #	Const.	For Pipe w/ Outside Diameter	Double Wall Metal Pipe	Single Wall Metal Pipe	J-M Trans- site	Overall Height	Overall Diameter	Factory Pack (Wgt. - lbs.)	UPC Item Code (050206)
3050	aluminum	2 7/8" - 4 7/8"	3" & 4"	3" & 4"	3" & 4"	4 1/2"	6 5/8"	12 (6.5)	17200 1
5070	aluminum	4 7/8" - 6 7/8"	5" & 6"	5" & 6"	5" & 6"	4 3/4"	9 1/2"	12 (10.7)	17210 0
7090	aluminum	6 7/8" - 8 7/8"	7" & 8"	7" & 8"	7" & 8"	5 7/8"	11 5/8"	12 (16.5)	17220 9
9011	aluminum	8 7/8" - 10 7/8"	9" & 10"	9" & 10"	9" & 10"	6 1/2"	12 3/4"	6 (12.0)	17230 8
1200	aluminum	11 7/8" - 14"	12"	12" & 14"	12"	8 11/16"	17 9/16"	2 (7.0)	17240 7
3050G	galvanized	2 7/8" - 4 7/8"	3" & 4"	3" & 4"	3" & 4"	4 1/2"	6 5/8"	12 (13.0)	17250 6
5070G	galvanized	4 7/8" - 6 7/8"	5" & 6"	5" & 6"	5" & 6"	4 3/4"	9 1/2"	12 (20.5)	17260 5
7090G	galvanized	6 7/8" - 8 7/8"	7" & 8"	7" & 8"	7" & 8"	5 7/8"	11 5/8"	12 (31.0)	17270 4

### Roof Flashing with Tapered Stacks



- Used as boot flashings around pipes extending through roof.
- Tapered stack adapts to roof pitches from 3/12 to 5/12.
- Built-in roof flashing - press sealed design for maximum leak protection.



28 GAUGE							
Model #	Fits Pipe Diam.	Base Size	DIMENSIONS		Factory Pack (Wgt. - lbs.)	UPC Item Code (050206)	
			A	B			
RFTS1/2	1/2"	12" x 12"	4.625"	6.625"	6 (5.0)	93432 6	
RFTS3/4	3/4"	12" x 12"	3.875"	3.625"	6 (5.0)	93430 2	
RFTS1	1"	12" x 12"	4.25"	3.625"	6 (5.0)	93440 1	
RFTS3	3"	12" x 12"	6.125"	5.125"	12 (16.0)	93450 0	
RFTS4	4"	13" x 13"	6.375"	6.125"	12 (17.5)	93460 9	
RFTS5	5"	15" x 15"	6.25"	7.125"	6 (11.0)	93470 8	
RFTS6	6"	15" x 15"	6.75"	8.125"	6 (12.0)	93480 7	
RFTS7	7"	15" x 15"	6.5"	8.125"	6 (16.0)	93482 1	

### Storm Collars



- For rain, snow and debris protection.
- Adjustable for various pitches.

28 GAUGE			
Model #	Fits Pipe Diameter	Factory Pack (Wgt. - lbs.)	UPC Item Code (050206)
SMC3	3"	6 (1.8)	93800 3
SMC4	4"	6 (2.0)	93780 8
SMC5	5"	6 (2.5)	93788 4
SMC6	6"	6 (2.5)	93790 7

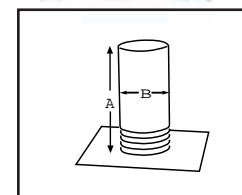
## Roof Top Venting

This section, color-coded yellow, includes all products installed on or above the roof.

### Lead Roof Flashings



- Used as boot flashings around pipes extending through roof.
- Designed to adjust to most roof pitches.



Model #	Fits Pipe Diam.	Base Size	DIMENSIONS		Factory Pack (Wgt. - lbs.)	UPC Item Code (050206)
			A	B		
LRF1.5	1 1/2"	8.5" x 10.5"	10.5"	1.5"	12 (36.0)	00132 5
LRF2	2"	8.5" x 10.5"	10.5"	2"	12 (39.0)	00133 2
LRF3	3"	10.5" x 12"	10.5"	3"	6 (27.0)	00136 3
LRF4	4"	10.5" x 12"	10.5"	4"	6 (30.0)	00137 0

## Heavy Gauge (24 & 26) Systems

This section, color-coded gray, includes heavy duty 24 and 26 gauge items.

### Round Metal Pipe



- Crimped end with stop-bead for easy interlocking fit.
- Heavier gauge for venting of boilers, furnaces, and hot water heaters.

### 26 Gauge

Model #	Diam.	Length	Factory Pack (Wgt. - lbs.)	UPC Item Code (050206)
26CP3X24	3"	2 ft.	10 (13.8)	92000 8
26CP4X24	3"	2 ft.	10 (18.0)	92018 3
26CP5X24	3"	2 ft.	10 (18.9)	92028 2
26CP6X24	3"	2 ft.	10 (23.7)	92038 1
26CP7X24	3"	2 ft.	10 (25.2)	92048 0
26CP8X24	3"	2 ft.	10 (31.6)	92058 9

### Aluminum

Model #	Diam.	Length	Factory Pack (Wgt. - lbs.)	UPC Item Code (050206)
AP3X24	3"	2 ft.	10 (5.4)	99018 6
AP4X24	4"	2 ft.	10 (6.9)	99020 9

### Adjustable Elbows



- Adjustable to 90 degree angle.
- Crimped end for interlocking fit.
- Heavier gauge for venting of boilers, furnaces and hot water heaters.

### 26 Gauge

Model #	Diameter	Factory Pack (Wgt. - lbs.)	UPC Item Code (050206)
26B90E3	3"	24 (12.0)	92296 5
26B90E4	4"	24 (17.0)	92302 3
26B90E5	5"	24 (22.0)	92322 1
26B90E6	6"	24 (26.0)	92336 8
2690E7	7"	12 (17.0)	92342 9
2690E8	8"	12 (21.0)	92354 2

### Aluminum

Model #	Diameter	Factory Pack (Wgt. - lbs.)	UPC Item Code (050206)
A90E3	3"	12 (2.0)	99022 3
A90E4	4"	12 (2.9)	99024 7

## Heavy Gauge (24 & 26) Systems

This section, color-coded gray, includes heavy duty 24 and 26 gauge items.

### Tees



- Used for venting bath and kitchen fans, and for heating and air conditioning applications.
- Use reducers to modify multiple pipe size connections.

#### 26 Gauge

Model #	Diameter	Factory Pack (Wgt. - lbs.)	UPC Item Code (050206)
26T6X6X6	All 6"	6 (9.2)	92444 0

### Reducers



- Used to reduce or increase round pipe from larger to smaller diameter.
- Collar edges hemmed for added strength and better fit.

#### 26 Gauge

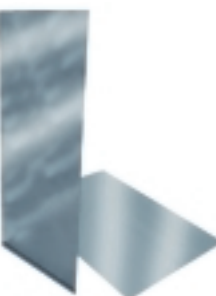
Model #	Diameter	Factory Pack (Wgt. - lbs.)	UPC Item Code (050206)
26R4X3	4" to 3"	12 (6.0)	92552 2
26R6X4	6" to 4"	12 (9.7)	92572 0

#### Aluminum

Model #	Diameter	Factory Pack (Wgt. - lbs.)	UPC Item Code (050206)
AR4X3	4" to 3"	12 (3.8)	99026 1

## Miscellaneous Items

### Galvanized Flat Sheet



- Make your own custom fittings.
- Can be cut to size for any application.
- 30 gauge galvanized steel.

Model #	Size	Factory Pack (Wgt. - lbs.)	UPC Item Code (050206)
GFS24X362PK	24" x 36"	6 (43.0)	02907 7
GFS36X48	36" x 48"	20 (90.0)	93706 8

### Wall Vents



- Used outside sidewall termination of kitchen and bath fans, range hoods and microwave venting.
- WVA 3.25 x 10 - Spring controlled damper - Foam gasket for tighter seal and quiet operation.
- Aluminum construction. (except WVA4BL - galvanized).
- Gravity Damper on all except WVA3.25x10.
- Screen on WVA4 & 4BL.

Model #	Size	Factory Pack (Wgt. - lbs.)	UPC Item Code (050206)
WVA4	4" Round Wall	6 (6.0)	77777 0
WVA6	6" Round Wall	6 (7.0)	93750 1
WVA7	7" Round Wall	6 (7.5)	93760 0
WVA3.25X10	3 1/4" x 10" Rect. Wall	6 (5.7)	93770 9
WVA4BL	4" Round Wall - Black	6 (6.0)	99909 7

## Miscellaneous Items

### Fresh Air Vents



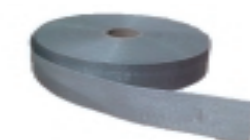
- Used to intake air into a combustion system or where fresh air intake is needed.
- Built in bird screen.
- Galvanized steel construction.

Model #	Diameter	Factory Pack (Wgt. - lbs.)	UPC Item Code (050206)
FAV4	4"	6 (6.6)	93772 3
FAV5	5"	6 (7.4)	93774 7
FAV6	6"	6 (7.8)	93776 1

### Straps and Hangers



3/4HS



HS1.75WV

- STR36 used to connect insulated flexible duct to fittings.
- Others used to hang insulated flexible duct, round pipe or rectangular duct or plumbing pipe, depending on the item.
- Helps prevent sagging over long runs.

Model #	Description	Factory Pack (Wgt. - lbs.)	UPC Item Code (050206)
STR36	Plastic Tie Straps 36" - 8 per pkg.	12 pkgs. (4.0)	93410 4
3/4HS	Perforated Metal Hanging straps - 3/4" x 100 ft.	10 pkgs. (33.0)	95400 3
HS1.75WV	Woven Vinyl Hanger Straps 1 3/4" x 100 yds.	12 ea. (20.5)	95506 2
6DH12	12" Perforated Steel Strap 6 per pkg.	12 pkgs. (15.0)	95406 5

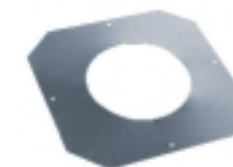
### Flexible Duct Connector



- Coupling used to connect two sections of insulated flexible duct.
- Crimped on both sides for an easy fit.

Model #	Diameter	Factory Pack (Wgt. - lbs.)	UPC Item Code (050206)
FC4	4"	24 (6.6)	93422 7
FC6	6"	24 (16.8)	93426 5

### Ceiling Collars (Escutcheons)



- Used as finishing piece where pipe passes through ceiling, wall or floor.

Model #	Fits Pipe Diameter	Factory Pack (Wgt. - lbs.)	UPC Item Code (050206)
CC4	4"	6 (1.5)	93370 1
CC6	6"	6 (1.5)	93380 0

### Round Duct Caps



- Used to terminate round pipe run.

Model #	Diameter	Factory Pack (Wgt. - lbs.)	UPC Item Code (050206)
DC3	3"	6 (2.0)	93710 5
DC4	4"	6 (2.5)	93720 4
DC5	5"	6 (2.5)	93722 8
DC6	6"	6 (2.5)	93730 3
DC7	7"	6 (3.0)	93724 2
8DC	8"	6 (3.0)	93732 7
DC10	10"	6 (6.0)	93734 1
DC12	12"	6 (7.5)	93736 5

## Miscellaneous Items

### Rectangular Duct Caps



- Used to terminate rectangular duct run.
- 28 gauge galvanized steel.

Model #	Duct Size	Factory Pack (Wgt. - lbs.)	UPC Item Code (050206)
RDC12X8	12" x 8"	6 (5.0)	95210 8
RDC14X8	14" x 8"	6 (6.0)	95215 3
RDC16X8	16" x 8"	6 (6.0)	95220 7
RDC24X8	24" x 8"	6 (7.5)	95230 6

### "S" & Drive Cleats



- For joining pieces of rectangular or rectangular stack duct.
- Galvanized steel construction.
- NOTE: CSH10 and CD10 sold in packages of 6.

Model #	Description	Factory Pack (Wgt. - lbs.)	UPC Item Code (050206)
CSH10	Hemmed "S" Cleat 10"	12 pkgs. (8.0)	94100 3
CS60	"S" Cleat - 60"	24 ea. (25.7)	94890 3
CD10	Drive Cleat - 10"	12 pkgs. (10.0)	95960 2
CD60	Drive Cleat - 60"	24 ea. (20.0)	95970 1

### Dampers



- For balancing and adjusting air flow in individual runs of round pipe.
- Spring loaded hardware for easy mounting into existing round pipe.

Model #	Fits Pipe Diameter	Factory Pack (Wgt. - lbs.)	UPC Item Code (050206)
D-4	4"	6 (1.2)	93310 7
D-6	6"	6 (2.0)	93330 5
D-8	8"	6 (2.5)	93350 3

### Bathroom Fan Eave Vents



- Used to vent bathroom exhaust through the undereaves.
- 4" length.
- White plastic construction - matches most undereaves color.
- Easy installation with router saw.

Model #	Fits Pipe Diameter	Factory Pack (Wgt. - lbs.)	UPC Item Code (050206)
BFEV3	3"	12 (3.8)	92324 5
BFEV4	4"	12 (4.0)	92325 2

### Access Door



- Maintenance door for normally inaccessible areas.
- Insulated to reduce vibration and noise.
- All steel construction.

Model #	Size	Factory Pack (Wgt. - lbs.)	UPC Item Code (050206)
AD24X48	24" x 48"	20 (11.0)	02890 2
AD30X42	30" x 42"	20 (12.0)	02891 9
AD30X48	30" x 48"	20 (14.0)	02892 6

### Insulated Duct Sleeve and Wrap



- Convenient sizes for smaller jobs.
- Easy installation for new and existing ductwork.

Model #	Description	Factory Pack (Wgt. - lbs.)	UPC Item Code (050206)
INSLV6	6" Sleeve x 5 ft. Length	9 (18.0)	02332 7
INSLV8	8" Sleeve x 5 ft. Length	9 (18.0)	02331 0
INSWRP60	60 sq. ft. Wrap 2" x 30"	3 (24.0)	02333 4

## Miscellaneous Items

### Fiberglass Weave



- Use with water based adhesive sealant to reinforce seams.

Model #	Description	Factory Pack (Wgt. - lbs.)	UPC Item Code (050206)
FGW3	3 x 150 ft.	24 rolls (12.0)	99300 2

### Water Based Adhesive Sealant/Mastic



- Use to seal all ductwork seams.

Model #	Description	Factory Pack (Wgt. - lbs.)	UPC Item Code (050206)
WBA10.5	10.5 oz. Tube	12 Tubes (8.0)	26954 1
WBA50	1/2 Gallon Tub	8 tubs (45.6)	99200 5

### Hex Type Screws



- No. 8 x 3/4" piercing, slotted hex head.

Model #	Description	Factory Pack (Wgt. - lbs.)	UPC Item Code (050206)
HT8X.75	No. 8 x 3/4" 100 per pack	21 packs (6.0)	99100 8

## Manufactured Housing Systems (Mobile Home)

This products in this section are designed specifically for use in manufactured and mobile home HVAC systems.

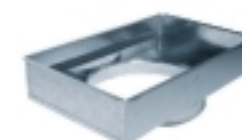
### Insulated Flexible Duct



- Heavy black polyethylene jacket with UV inhibitors.
- 1 1/4" thick
- R-Value: 4.2
- For use outdoors or indoors.

Model #	Description	Factory Pack (Wgt. - lbs.)	UPC Item Code (050206)
MIF12X300	12" Diameter-25 ft length-Black	1 (18.5)	92262 0
MIF14X300	14" Diameter-25 ft. length-Black	1 (20.0)	92272 9

### Return Air Filter Boxes



- For use with self contained air conditioning units.
- Transition from floor grille to insulated flexible duct return line.
- Filter not included.

Model #	Size	Factory Pack (Wgt. - lbs.)	UPC Item Code (050206)
RA12X20X12	12" x 20" x 12"	3 (10.5)	94240 6

### Floor Grill



- For air conditioning return air systems.
- Rigid smooth surface.
- Brown enamel finish.
- Mounts to return air filter box.

Model #	Diameter	Factory Pack (Wgt. - lbs.)	UPC Item Code (050206)
FG12X20	12" x 20"	6 (40.0)	94440 0