

■ **Contents & Safety**

Each Rail Kit contains the following components:

1 (one) pre-drilled top rail, 1 (one) pre-drilled bottom rail and 1 (one) level hardware kit (stair hardware kit sold separately).

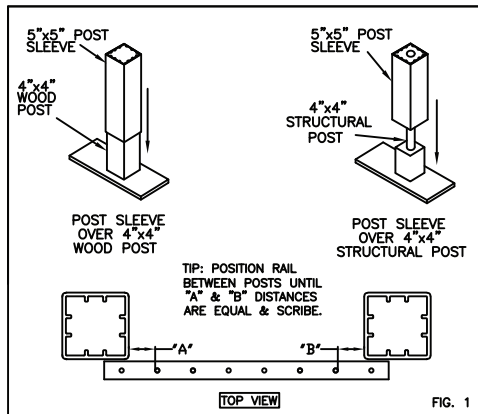
Each Baluster Pack contains the following components:

15 (fifteen) balusters and 32 (thirty-two) Uni-Ball™ connectors (extras to create foot blocks). Number of balusters needed: 6' rail: 13 / 8' rail: 18

- Follow safe practices when using tools during the installation process.
- Review and comply with all applicable local, state and federal laws and building codes
- Read all instructions before beginning the installation process.

■ **Step 1: Post Sleeve Installation for ALL Applications**

5"X5" post sleeves are designed to slide over standard 4"X4" wooden posts or structural post mount kits (see Fig. 1). After post sleeve installation, install trim collars and caps.



**LEVEL RAILING APPLICATION INSTRUCTIONS**

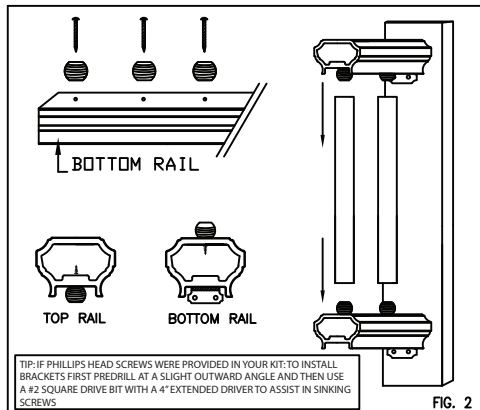
■ **Step 2: Determining Rail Lengths**

Determine the total rail length by measuring the distance between post sleeves. To achieve even baluster distance spacing, remove an equal distance from each end of the rail.

TIP: Place bottom rail against both post sleeves and slide left or right until there is an equal distance between the baluster pilot holes and the post sleeves (See Fig. 1). Scribe a pencil mark and cut the bottom rail. Repeat procedure for top rail.

■ **Step 3: UNI-Ball™ Baluster Connectors and Foot Block**

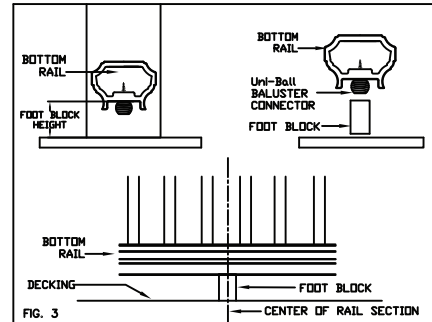
Install the Uni-Ball™ baluster connectors to each rail at the pilot hole locations (See Fig. 2).



■ **Step 3 (cont.)**

Foot Block: Using a baluster, cut a foot block to your required height and attach to the center of the bottom rail (See Fig. 3).

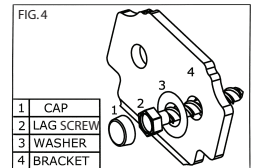
CAUTION: once a baluster or a foot block has been applied to the Uni-Ball™ connector it should NOT be removed. If it is necessary to remove the baluster from the Uni-Ball™ connector, remove and replace the Uni-Ball™ connector before reapplying the baluster or foot block.



■ **Step 4: Install Bottom Rail**

NOTE: When attaching all brackets to either rails or posts, you must first pre-drill all locations using a 7/32" drill bit. **RESERVE 2" SCREWS FOR ATTACHING TOP RAIL TO POST IN STEP 6.**

Hand Rails: Hold the 90 degree mounting brackets to the underside of the bottom rail and position each bracket until flush with the ends of the rail. Pre-drill holes and affix the 90 degree brackets to bottom rail using the screws or lag screws provided and drill a third hole an equal distance after the bracket holes for drainage (see Note A at bottom of page). Repeat this process for the top rail. Next, with the foot block attached, position and level the bottom rail between the posts and mark the screw hole locations on each post. Pre-drill holes and fasten the bottom rail to posts using the 1-1/2" lag screws provided (as stated above).

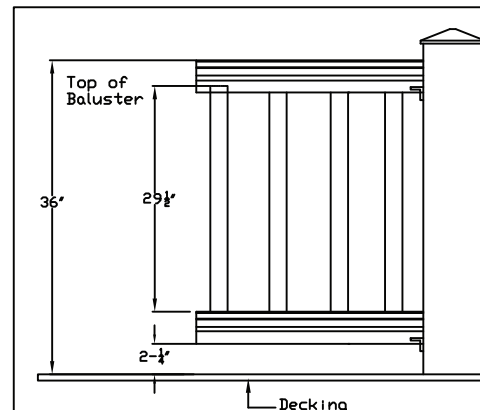


■ **Step 5: Install Balusters**

Balusters: Insert balusters over each Uni-Ball™ connector on the bottom rail.

■ **Step 6: Install Top Rail**

Top Rail: Align and insert the top rail with attached Uni-Ball™ connectors into each baluster (See Fig. 2). Using a rubber mallet, gently tap the top rail down to secure into position. Center the top rail between each post sleeve and mark for screw hole locations for the top mounting brackets. Lean top rail away from the marked locations, then pre-drill holes. Next re-align the top rail mounting brackets with the holes and affix to posts using the 2" lag screws provided (see Note A at bottom of page). Add caps on screws (provided).



Note A: One version provided - If you have lag screws, install as seen in Figure 4.

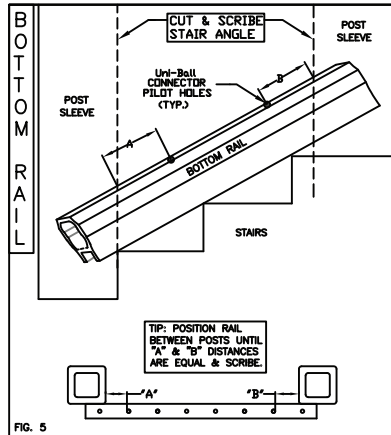
# RailWays® Traditional, Signature & SELECT Stair Railing Application Instructions

Follow **Post Sleeve Installation Instructions for ALL Applications** on front side of this sheet.

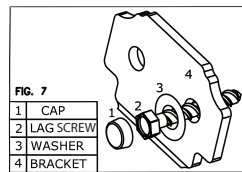
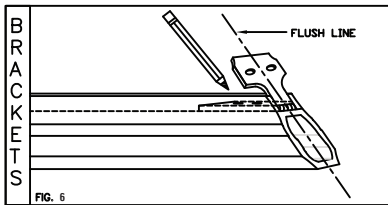
## STAIR RAILING APPLICATION INSTRUCTIONS

### Step 2: Determining Rail Length, Bottom Rail

Place rail on the stair treads against your two posts and slide left and right until there is an equal distance from the end baluster pilot holes to the post sleeves (see Fig. 5).



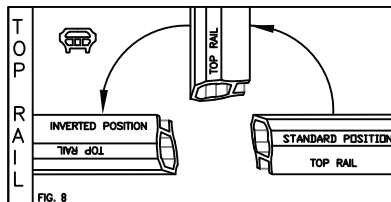
Scribe a mark along each post sleeve onto rail to acquire the proper stair angle and cut each end of the rail on these marks. Next, fasten the stair brackets to the rail by placing the brackets on the underside of the rail and position the brackets flush with the ends of the rail. (TIP: Adjust the hinged brackets to match the angle at each end of the rail (see Fig. 6).



Mark the screw hole locations, then pre-drill holes using a 7/32" drill bit. Next, affix the stair bracket to the rail using the screws or bolts provided (see Note A at bottom of page). Once completed, install the Uni-Ball™ baluster connectors at the pilot hole locations. NOTE: Depending on the degree of your stair angle, the end screw may protrude past the angle of the rail. If this is the case, replace screw with the #14 X 1-1/4" mounting screw provided.

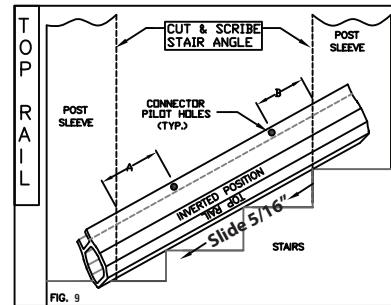
### Step 3: Fabricating Top Rail

Holding the top rail in its standard position, invert rail 180 degrees (see Fig. 8).



### Step 3 (cont.)

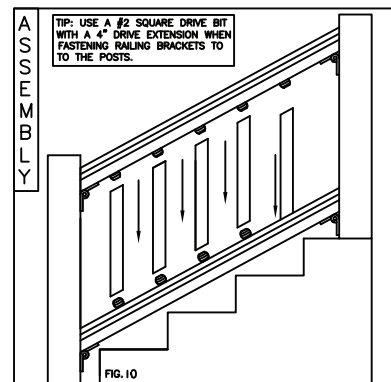
In its rotated position, place rail on the stair treads against your two posts and duplicate the same procedure, for alignment as done for the bottom rail. To ensure perpendicular baluster installation slide top rail 5/16" (see Fig. 9). Scribe, cut and attach Uni-Balls.



### Step 4: Fabricating Balusters

See Level Application Instructions for directions on installing UniBall to rail.

Cut the ends of each baluster to the angles already established from the top and bottom rail. Be sure that the lengths and angles are the same for each baluster (see Fig. 10).



### Step 5: Install Bottom Rail

Determine the height of your sweep and mark location on each post sleeve. Align the underside of the bottom rail to this line and center rail post sleeve. Mark the screw hole locations for each mounting bracket, then pre-drill holes using a 7/32" drill bit. Re-align the mounting bracket with the pre-drilled holes and affix to posts using the lag screws provided (see Note A at bottom of page).

### Step 6: Install Balusters

Insert balusters over each Uni-Ball™ Baluster Connector on the bottom rail. (CAUTION: Once a baluster has been applied to the Uni-Ball™ Baluster Connector it should not be removed. If it is necessary to remove the baluster from the Uni-Ball™ Baluster Connector, remove and replace the Uni-Ball™ connector before re-applying the baluster).

### Step 7: Install Top Rail

Install the top rail by aligning the top rail Uni-Ball™ Baluster Connectors over each baluster and insert into position. Using a rubber mallet, gently tap the top rail down to secure into position. Center the top rail on each post sleeve and mark the screw hole locations for the top mounting brackets. Lean top rail away from the marked locations and pre-drill holes using a 7/32" drill bit. Finally, re-align the top rail mounting brackets and affix to posts using the 1-1/2" lag screws provided (see Note A at bottom of page).

**Note A: One version provided - If you have lag screws, install as seen in Figure 7.**