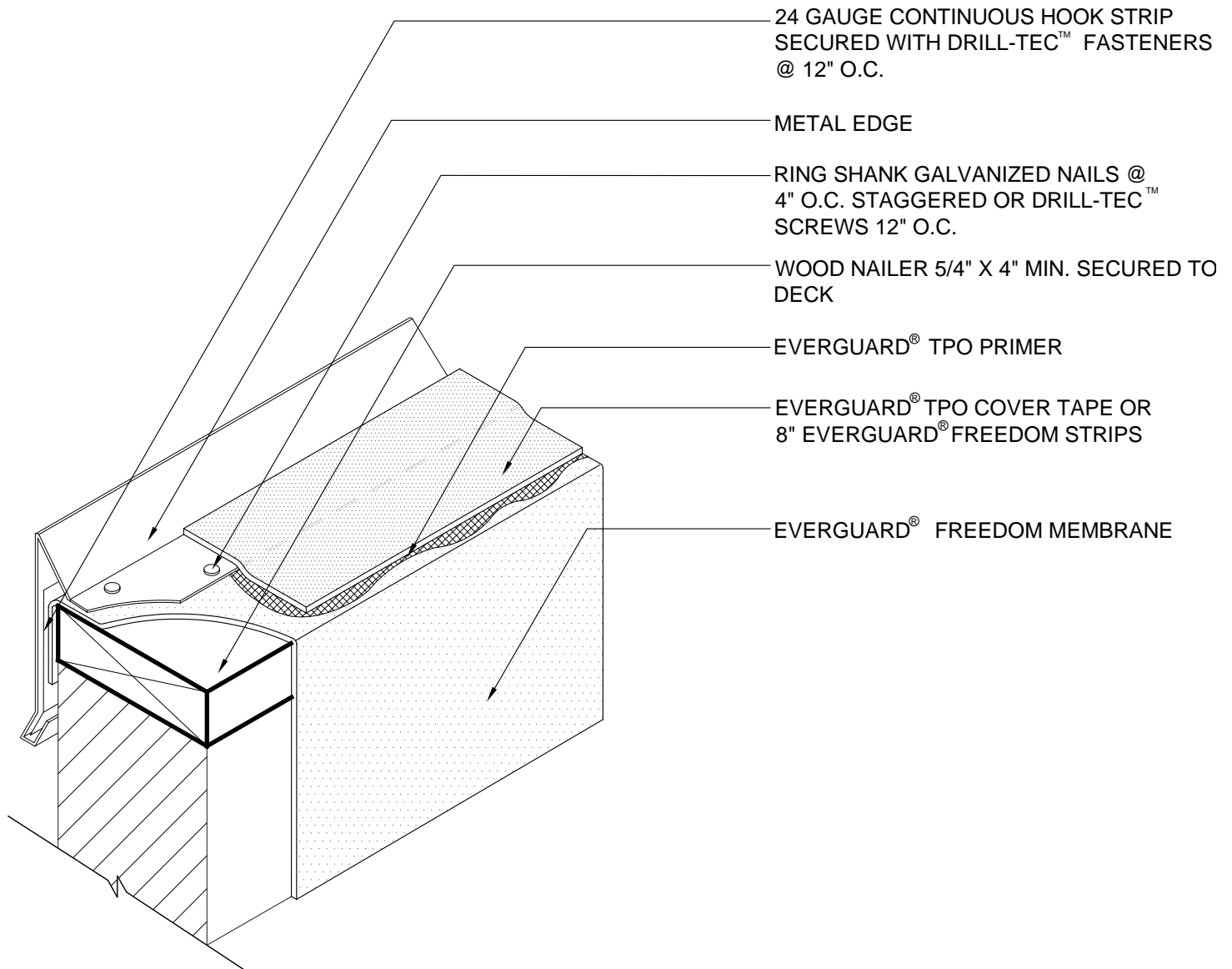


**RAPID SEAM™ MAX 10 YR GUARANTEE**



24 GAUGE CONTINUOUS HOOK STRIP SECURED WITH DRILL-TEC™ FASTENERS @ 12" O.C.

METAL EDGE

RING SHANK GALVANIZED NAILS @ 4" O.C. STAGGERED OR DRILL-TEC™ SCREWS 12" O.C.

WOOD NAILER 5/4" X 4" MIN. SECURED TO DECK

EVERGUARD® TPO PRIMER

EVERGUARD® TPO COVER TAPE OR 8" EVERGUARD® FREEDOM STRIPS

EVERGUARD® FREEDOM MEMBRANE

**NOTE:**

1. TO MAKE A SEAM ON RAPID SEAM™ WITHOUT RAPID SEAM™ PRESENT, YOU MUST USE GAF CLEANER AS WELL AS EVERGUARD® TPO PRIMER TO PREP THE AREA.
2. METAL JOINTS (CANTED ROOF SIDE) CAN BE CAULKED USING GAF GUN GRADE SEALANT. DO NOT RUN TAPE UP CANTED METAL
3. EVERGUARD® TPO COVER TAPE TO BE USED ONLY ON TPO MEMBRANE SYSTEMS,
4. EVERGUARD® TPO COVER TAPE TO BE USED ONLY ON HORIZONTAL SURFACES, NOT TURNED DOWN VERTICAL
5. APPLY EVERGUARD® TPO CUT EDGE SEALANT TO ALL RAPID SEAM EDGES ( REFER TO DETAIL FD 115 ).



PARAPET WALL & CURB SERIES

**PARAPET WALL WITH METAL EDGE AND TPO COVER TAPE**

RAPIDSEAM ONLY

DRAWING #

**316**

SCALE

N.T.S.

SYSTEM

**FD**

ISSUE/ REVISION DATE

3-1-10