



## DOUBLE-SIDED AND STRIP-IN TAPES

### Description

EverGuard<sup>®</sup> TPO single-ply accessories provide roofing contractors with easy-to-install self-adhering details. These tapes are designed for use with Freedom<sup>™</sup> RapidSeam<sup>™</sup> applications, allowing a complete installation without the use of a heat welder.

#### • Cost effective...

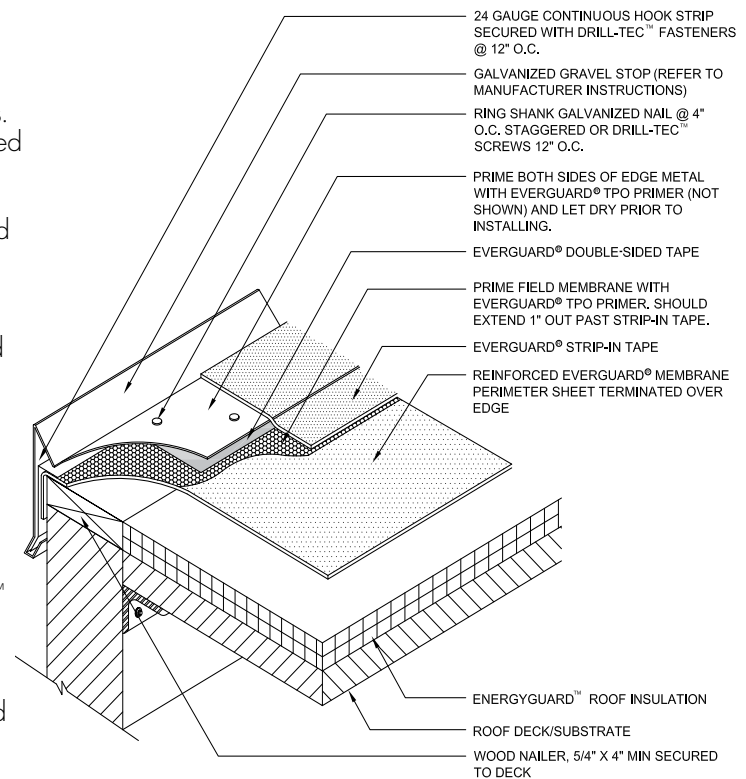
Tape-applied accessories eliminate the time-consuming heat-welding process for virtually all accessory details found on typical Freedom<sup>™</sup> RapidSeam<sup>™</sup> jobs. Application of everything from Preformed Vent Boots to T-joint Patches can be adhered with either Strip-In Tape or a combination of Double-Sided Tape and Strip-In Tape.

#### • Great aesthetics...

These flexible tapes have an extremely strong adhesive, adhere well to primed surfaces, and lay flat for a low profile appearance.

### Application

EverGuard<sup>®</sup> Double-Sided and Strip-In Tapes are designed to secure and seal virtually any standard EverGuard<sup>®</sup> accessory or flashing detail on Freedom<sup>™</sup> RapidSeam<sup>™</sup> installations. Any surface mated to the tapes **MUST** be clean and primed with EverGuard<sup>®</sup> Low VOC TPO Primer. Tapes will not adhere to unprimed areas. Additional details are available at [www.gaf.com](http://www.gaf.com).



**NOTE:**

1. BE SURE TO CLEAN METAL AND MEMBRANE WITH EVERGUARD<sup>®</sup> TPO CLEANER BEFORE PRIMING.
2. DO NOT USE ON SLOPES GREATER THAN 1/12. FOR SLOPES GREATER THAN 1/12, REFER TO EVERGUARD<sup>®</sup> DETAIL 218 OR 219.
3. DRAWING IS NOT TO SCALE.

These tapes are also great for temporary repairs. Approved details may be included in EverGuard<sup>®</sup> Freedom<sup>™</sup> RapidSeam<sup>™</sup> TPO guaranteed projects.

Shelf Life: Best if used within one year of manufacture.

### EverGuard<sup>®</sup> TPO Double-Sided and Strip-In Tapes

Nominal Specifications	Double-Sided	Strip-In Tapes
<b>Roll Dimension:</b>	6" x 75'	8" x 75'
<b>Roll Weight:</b>	5 lbs/each	7 lbs/each
<b>Rolls Per Carton:</b>	6	6
<b>Weight Per Carton:</b>	33.5 lbs	43 lbs
<b>Cartons Per Pallet:</b>	30	30
<b>Weight Per Pallet:</b>	1,060 lbs	1,360 lbs

Quality You Can Trust...From North America's Largest Roofing Manufacturer!<sup>™</sup>

[gaf.com](http://gaf.com)