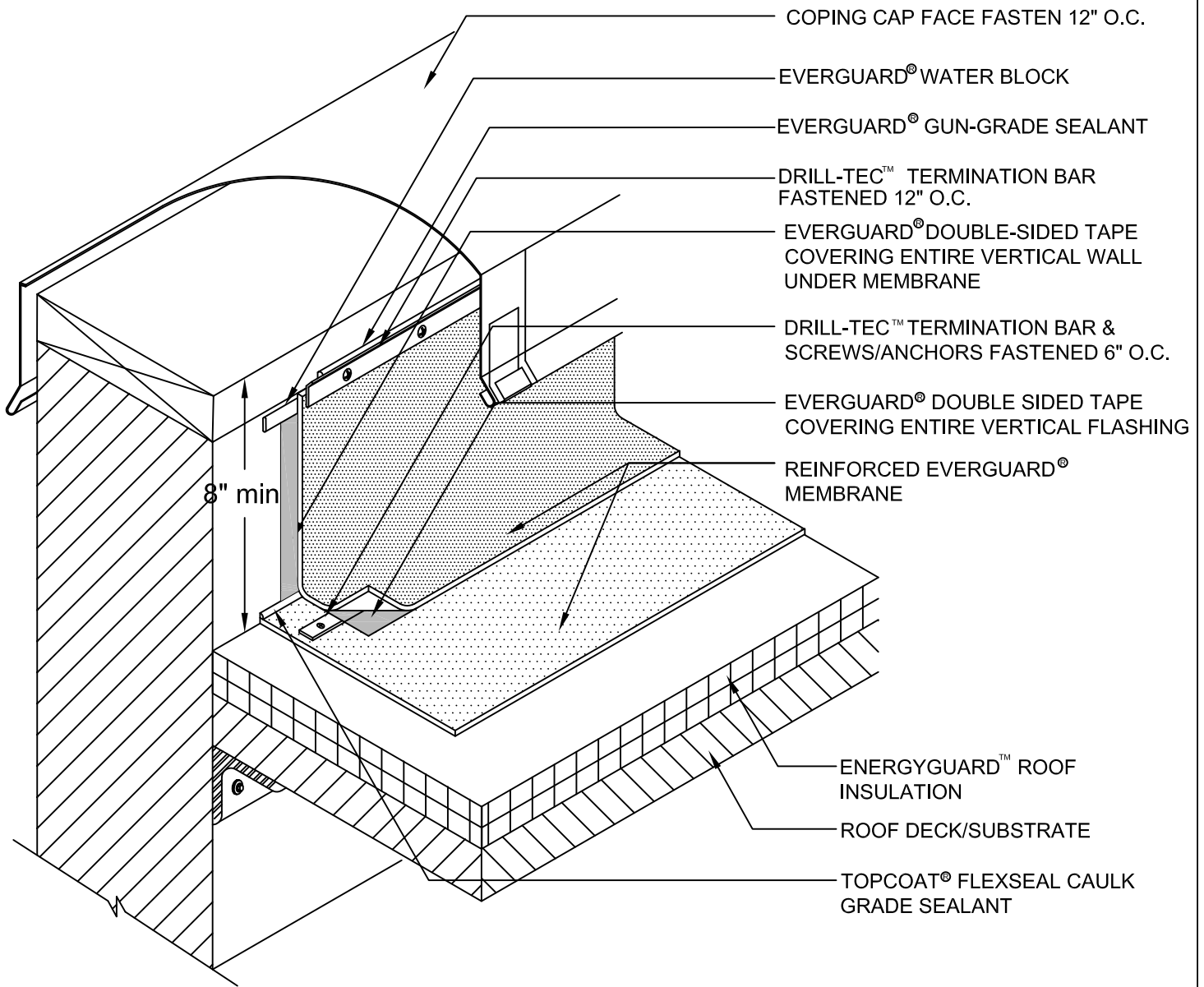


FOR JOBS UP TO 50 SQUARES ONLY



NOTE:

1. BE SURE TO CLEAN METAL AND MEMBRANE WITH EVERGUARD® TPO SEAM CLEANER BEFORE PRIMING.
2. MEMBRANE MUST BE PRIMED AND DRY PRIOR TO APPLYING EVERGUARD® DOUBLE SIDED TAPE.
3. REFER TO DETAIL 702 FOR FIELD MEMBRANE ATTACHMENT.
4. APPLY TOPCOAT® FLEXSEAL CAULK GRADE TO ALL EVERGUARD® STRIP-IN TAPE EDGES.



1361 Alps Rd.
Wayne, NJ 07470
www.gaf.com

EverGuard
SINGLE-PLY ROOFING SYSTEMS
PARAPET WALL &
CURB SERIES

DRAWING #

733

SCALE
N.T.S.

**CURB AND WALL WITH COPING CAP
DETAIL**

THIS DETAIL APPLIES TO:

**Taped Seam
Systems**

REVISION DATE
7-1-13