

REFERENCE EVERGUARD® PARAPET WALL & CURB FLASHING DETAILS (300 SERIES) FOR WALL OR CURB TERMINATION

EVERGUARD® BONDING ADHESIVE

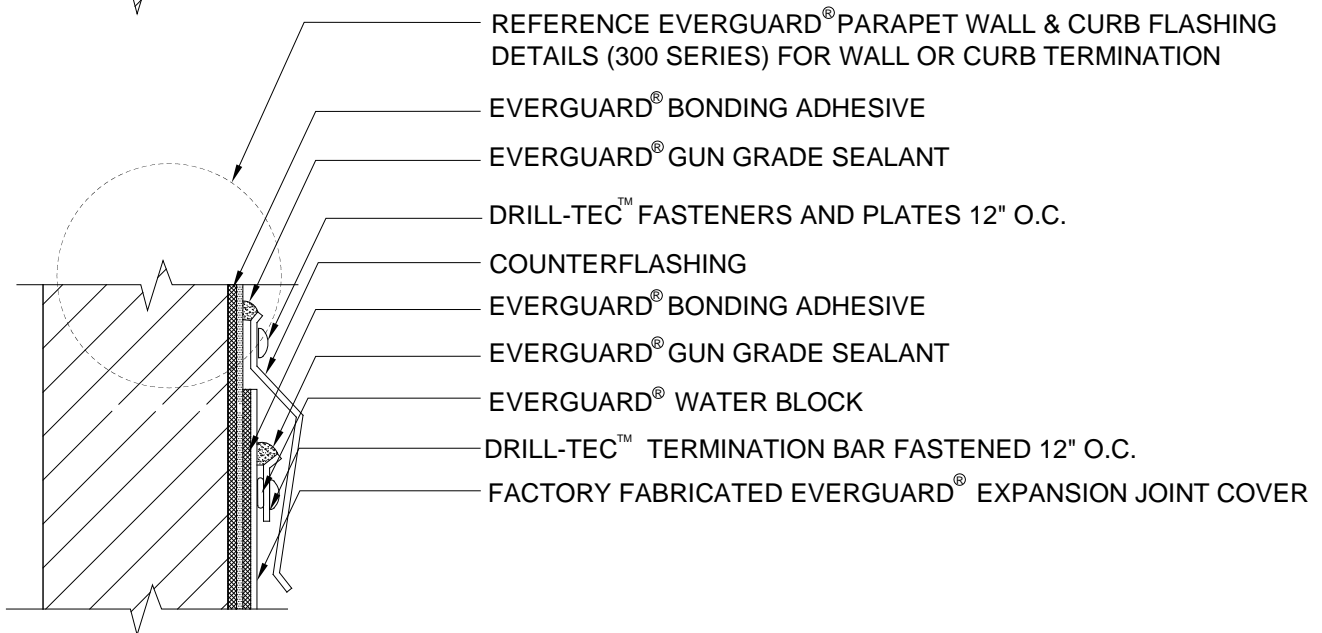
FACTORY FABRICATED EVERGUARD® EXPANSION JOINT COVER

DRILL-TEC™ FASTENERS AND PLATES 12" O.C.

REINFORCED EVERGUARD® MEMBRANE

HEAT WELDED LAP

CUT EDGE SEALANT



REFERENCE EVERGUARD® PARAPET WALL & CURB FLASHING DETAILS (300 SERIES) FOR WALL OR CURB TERMINATION

EVERGUARD® BONDING ADHESIVE

EVERGUARD® GUN GRADE SEALANT

DRILL-TEC™ FASTENERS AND PLATES 12" O.C.

COUNTERFLASHING

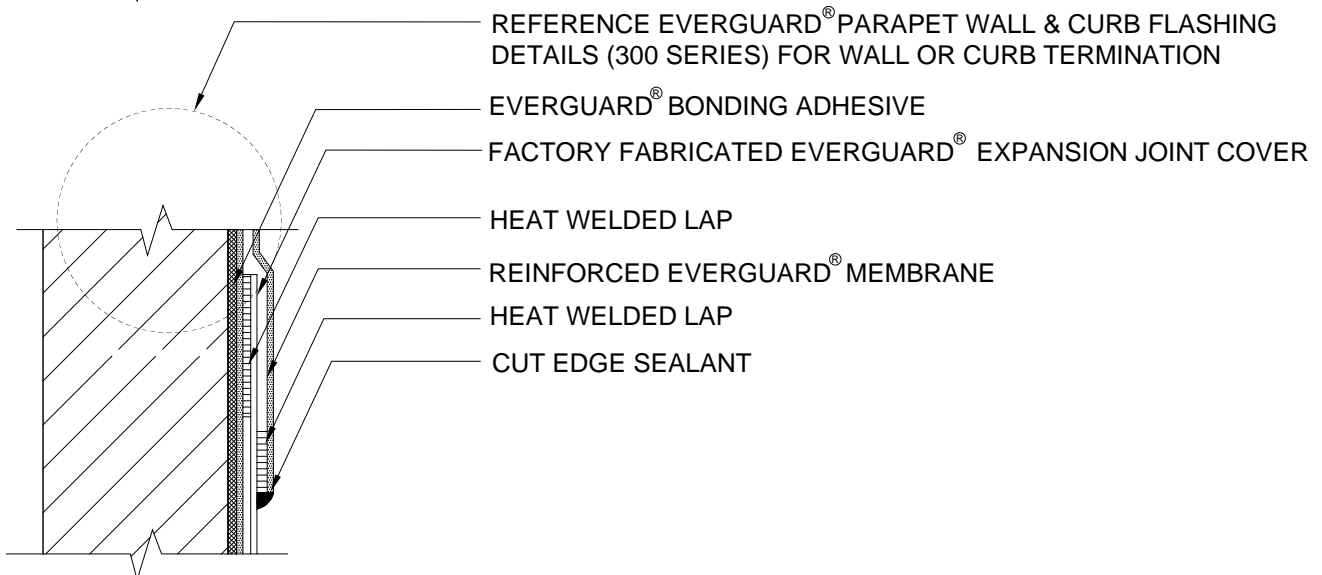
EVERGUARD® BONDING ADHESIVE

EVERGUARD® GUN GRADE SEALANT

EVERGUARD® WATER BLOCK

DRILL-TEC™ TERMINATION BAR FASTENED 12" O.C.

FACTORY FABRICATED EVERGUARD® EXPANSION JOINT COVER



REFERENCE EVERGUARD® PARAPET WALL & CURB FLASHING DETAILS (300 SERIES) FOR WALL OR CURB TERMINATION

EVERGUARD® BONDING ADHESIVE

FACTORY FABRICATED EVERGUARD® EXPANSION JOINT COVER

HEAT WELDED LAP

REINFORCED EVERGUARD® MEMBRANE

HEAT WELDED LAP

CUT EDGE SEALANT



ALTERNATE WALL EXPANSION JOINT TERMINATION DETAILS

EXPANSION JOINT SERIES

TPO ONLY

DRAWING #

418

SCALE

N.T.S.

SYSTEM

MA/FA/BA

ISSUE/ REVISION DATE

9-01-09