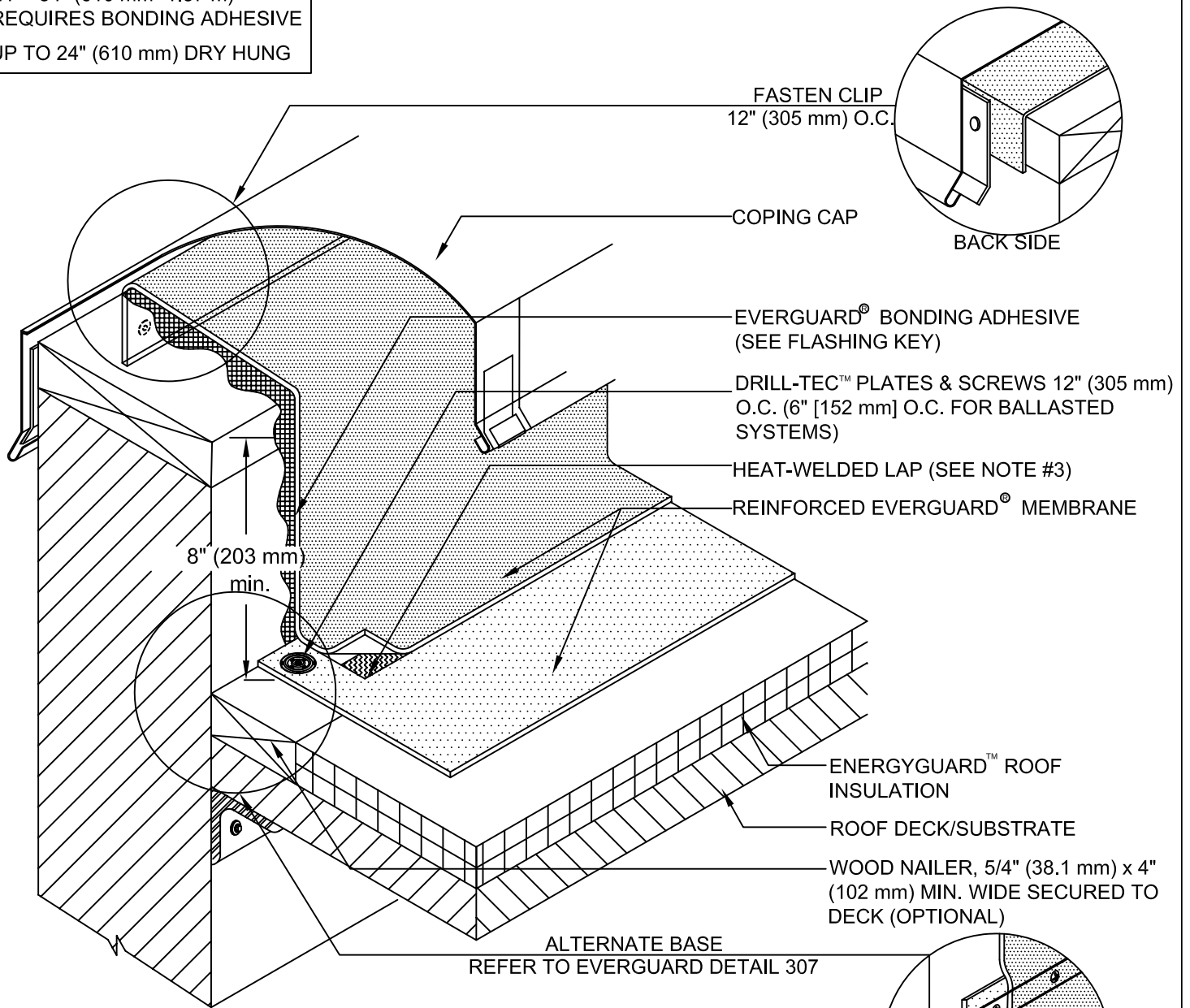


**FLASHING KEY**

- 24" - 54" (610 mm -1.37 m)  
REQUIRES BONDING ADHESIVE
- UP TO 24" (610 mm) DRY HUNG



**NOTE:**

1. FOR INSULATION THICKNESS GREATER THAN 8" (203 mm), A HARD BOARD IS REQUIRED ON MECHANICALLY FASTENED SYSTEMS ONLY.
2. IF EVERGUARD®FREEDOM™ MEMBRANE IS USED, BONDING ADHESIVE IS NOT NEEDED AND WALL MUST BE PRIMED
3. APPLY EVERGUARD® TPO CUT EDGE SEALANT TO ALL CUT REINFORCED TPO EDGES (REFER TO EVERGUARD® DETAIL 115).
4. FOR SELF-ADHERED RAPIDSEAM™ TECHNOLOGY SYSTEMS, SEE EVERGUARD® DETAIL 330 FOR LAP APPLICATION.



**EverGuard**  
SINGLE-PLY ROOFING SYSTEMS  
PARAPET WALL &  
CURB SERIES

DRAWING #

**303**

SCALE  
N.T.S.

**WALL CAP DETAIL**

THIS DETAIL APPLIES TO:

**ALL SYSTEMS**

REVISION DATE  
6-20-16

www.gaf.com  
1 Campus Drive,  
Parsippany, NJ 07054