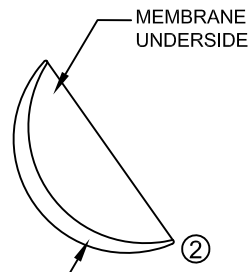
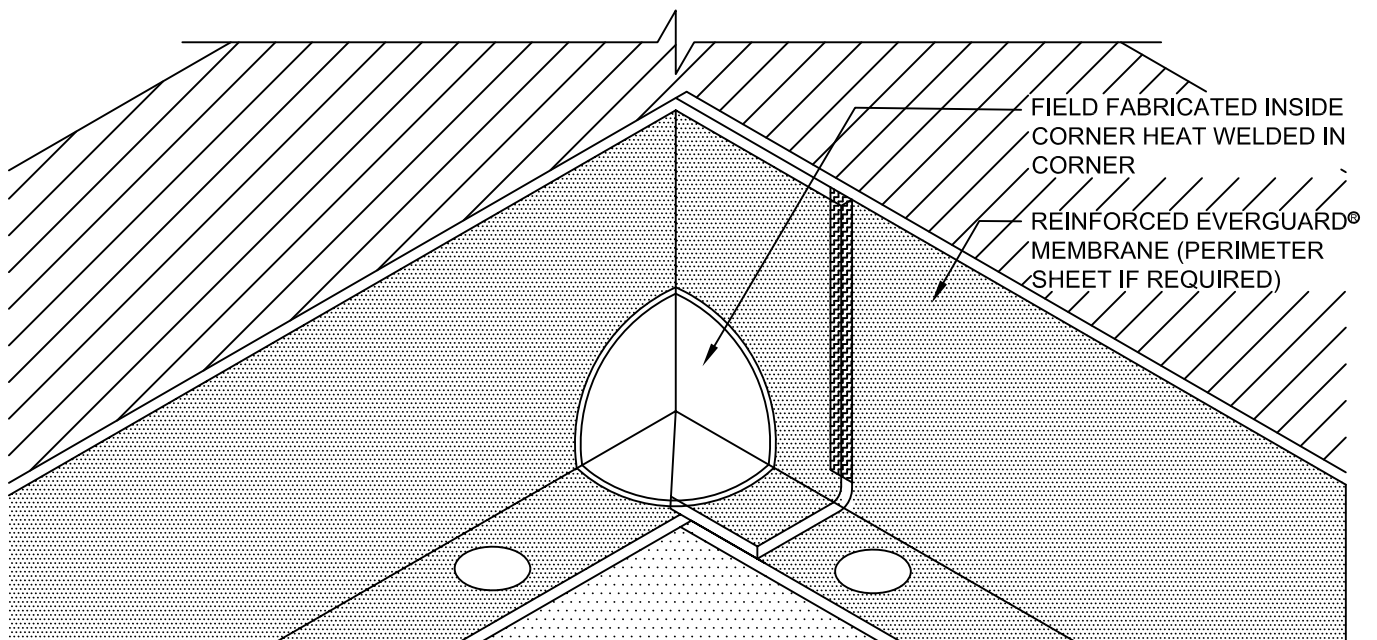
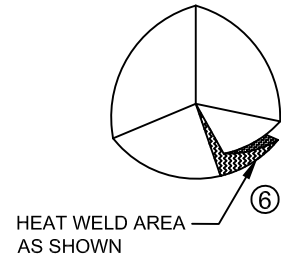
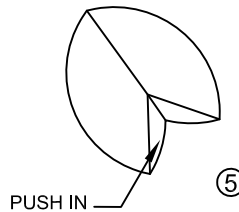
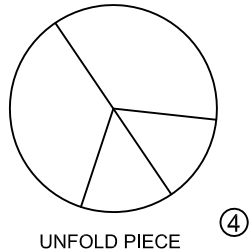
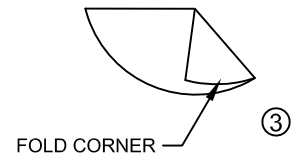


CUT A SECTION OF NON-REINFORCED EVERGUARD® MEMBRANE. FOLD ALONG LINE AS INDICATED.

FOLD LINE



MEMBRANE SURFACE



**NOTE:**

1. FOR INSULATION THICKNESS GREATER THAN 8" (203 MM), A HARD BOARD IS REQUIRED ON MECHANICAL SYSTEMS ONLY.
2. 25 YEAR GUARANTEES AND ABOVE MUST USE EXTREME ACCESSORIES
3. IF EVERGUARD® FREEDOM™ MEMBRANE IS USED, BONDING ADHESIVE IS NOT NEEDED AND WALL MUST BE PRIMED.
4. APPLY EVERGUARD® TPO CUT EDGE SEALANT TO ALL CUT REINFORCED TPO EDGES (REFER TO EVERGUARD® DETAIL 115).



**EverGuard**  
SINGLE-PLY ROOFING SYSTEMS  
PARAPET WALL &  
CURB SERIES

DRAWING #  
**327D**

**INSIDE CORNER REINFORCEMENT -  
FIELD FABRICATION DETAIL**

THIS DETAIL APPLIES TO:

**ALL SYSTEMS**

www.gaf.com  
1 Campus Drive,  
Parsippany, NJ 07054

SCALE  
N.T.S.

REVISION DATE  
5-24-16