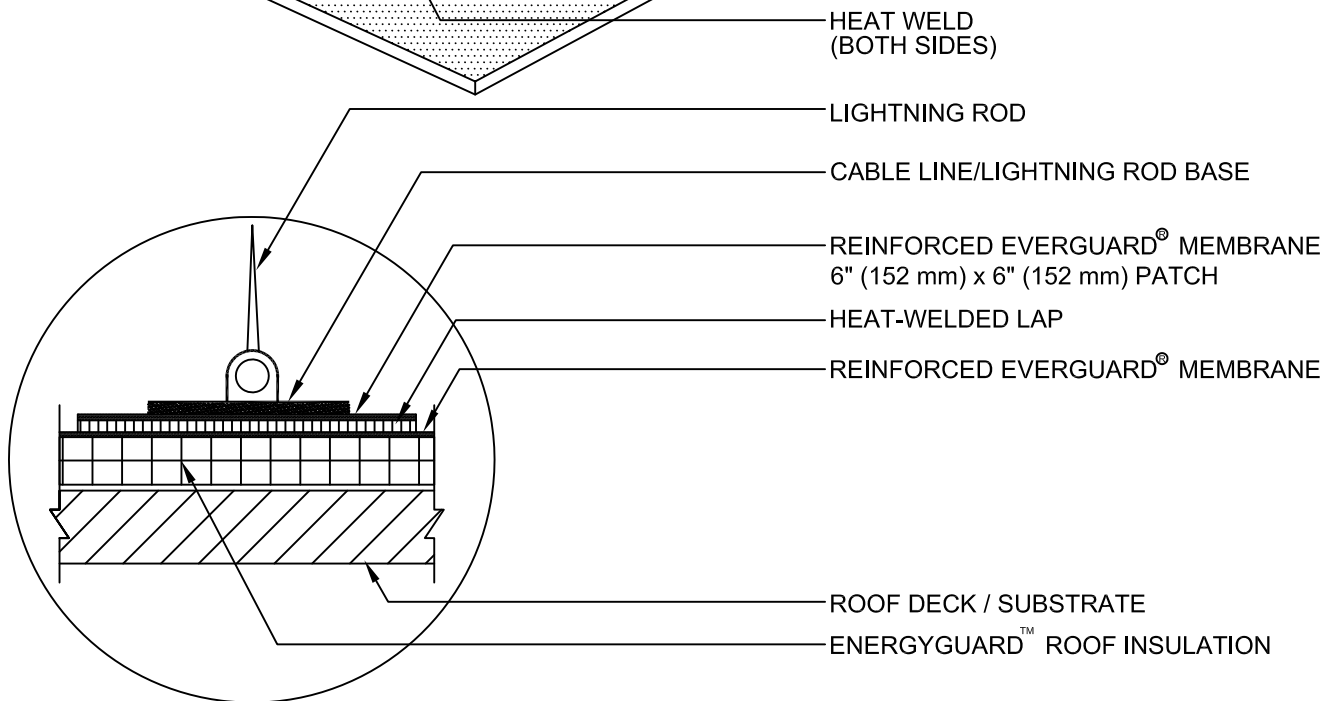
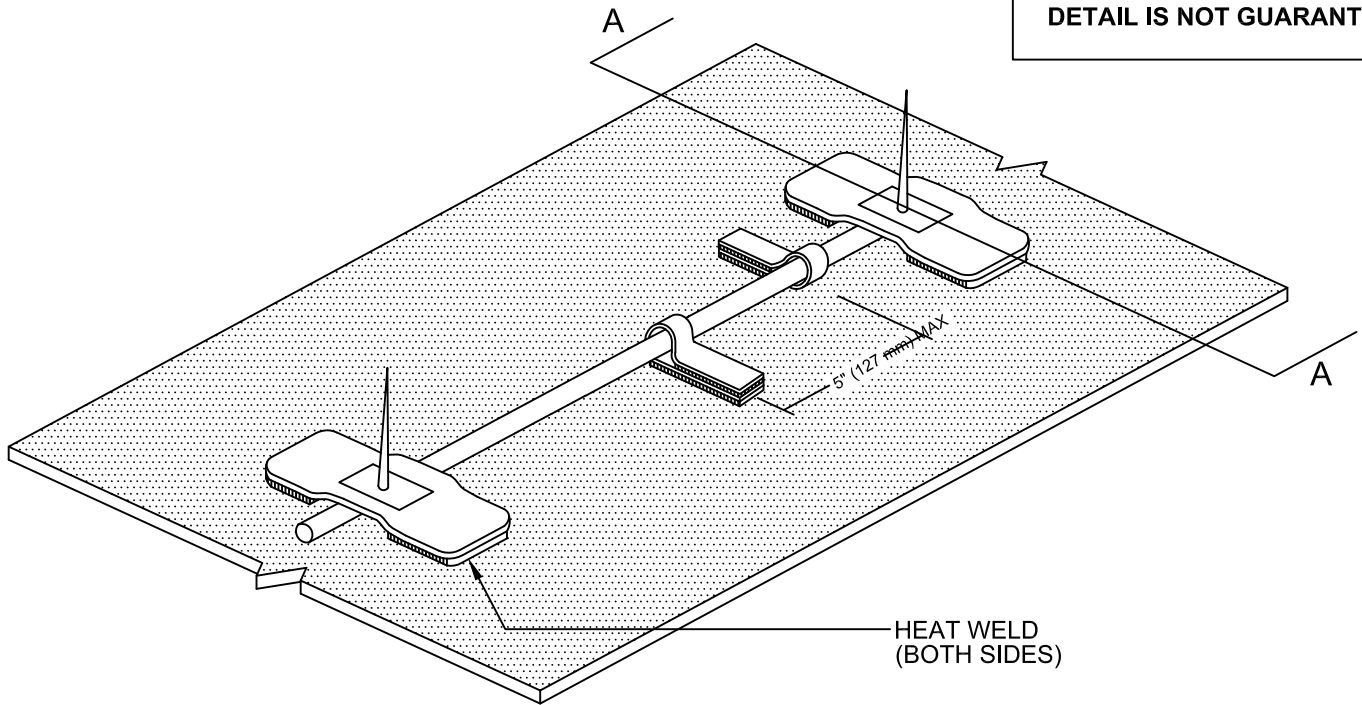


DETAIL IS NOT GUARANTEED



SECTION A

NOTE:

1. APPLY EVERGUARD® TPO CUT EDGE SEALANT TO ALL CUT REINFORCED TPO EDGES (REFER TO EVERGUARD® DETAIL 115).



www.gaf.com
1 Campus Drive,
 Parsippany, NJ 07054

EverGuard
SINGLE-PLY ROOFING SYSTEMS
ROOF PENETRATION
SERIES

DRAWING #

605

SCALE
N.T.S.

ADHERED LOOPED LIGHTNING SUPPRESSION MOUNTING

THIS DETAIL APPLIES TO:

ALL SYSTEMS

REVISION DATE
6-22-16