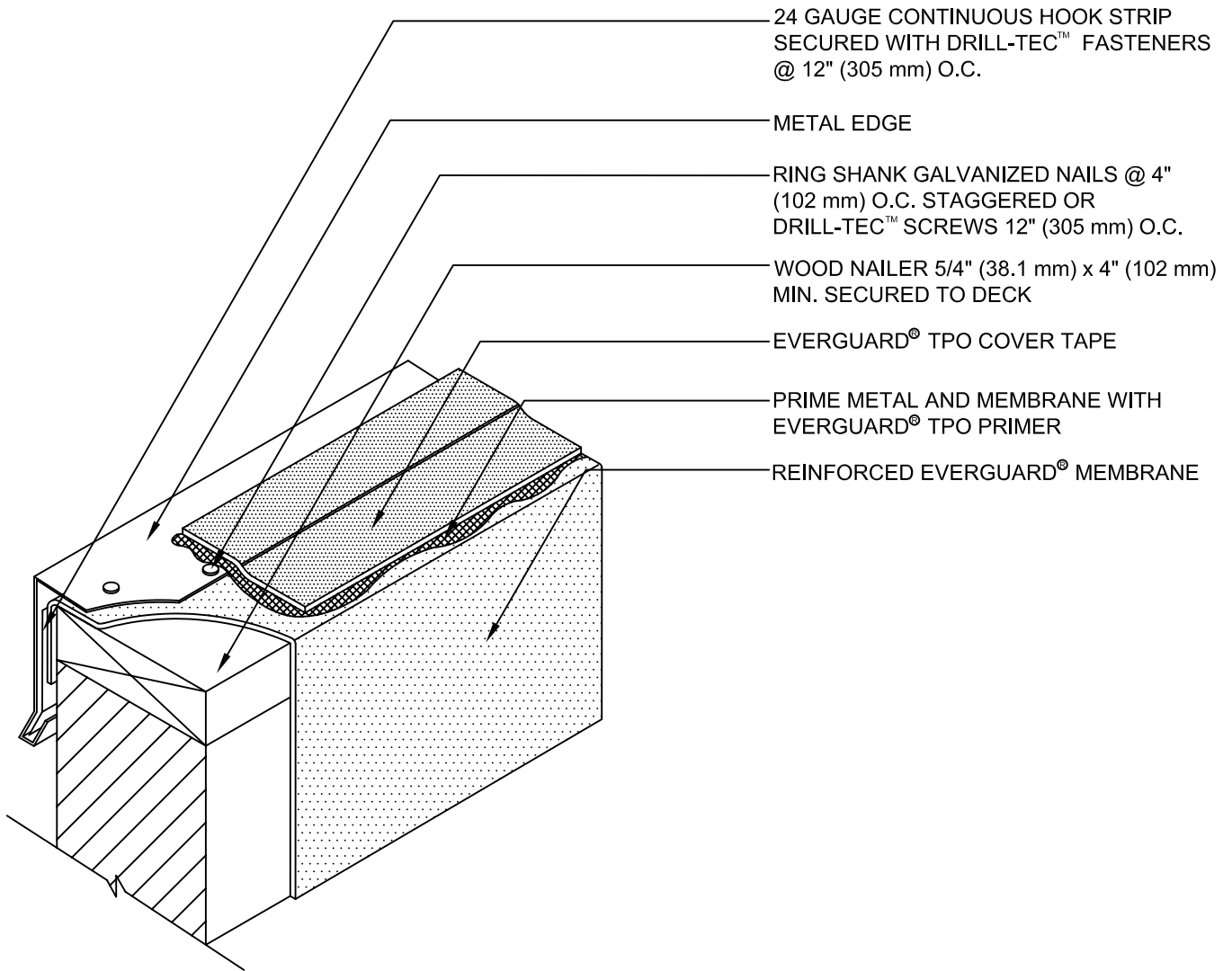


**20 YEAR MAX
GUARANTEE**



NOTE:

1. METAL JOINTS ON THE ROOF SIDE CAN BE CAULKED USING EVERGUARD® CUT EDGE SEALANT. DO NOT RUN TAPE UP CANTED METAL OF GRAVEL STOP.
2. EVERGUARD® TPO COVER TAPE TO BE USED ONLY ON EVERGUARD® TPO MEMBRANE SYSTEMS.
3. EVERGUARD® TPO COVER TAPE TO BE USED ONLY ON HORIZONTAL SURFACES, NOT TURNED VERTICALLY.
4. EVERGUARD® TPO COVER TAPE HEAT-WELD USED FOR LONGER GUARANTEES.
5. IF EVERGUARD® FREEDOM™ MEMBRANE IS USED, BONDING ADHESIVE IS NOT NEEDED AND WALL MUST BE PRIMED.
6. APPLY EVERGUARD® TPO CUT EDGE SEALANT TO ALL CUT REINFORCED TPO EDGES (REFER TO EVERGUARD DETAIL 115).



EverGuard
SINGLE-PLY ROOFING SYSTEMS
PARAPET WALL &
CURB SERIES

DRAWING #

316

**PARAPET WALL WITH METAL EDGE
AND TPO COVER TAPE DETAIL**

THIS DETAIL APPLIES TO:

ALL SYSTEMS

www.gaf.com
1 Campus Drive,
 Parsippany, NJ 07054

SCALE
N.T.S.

REVISION DATE
6-20-16