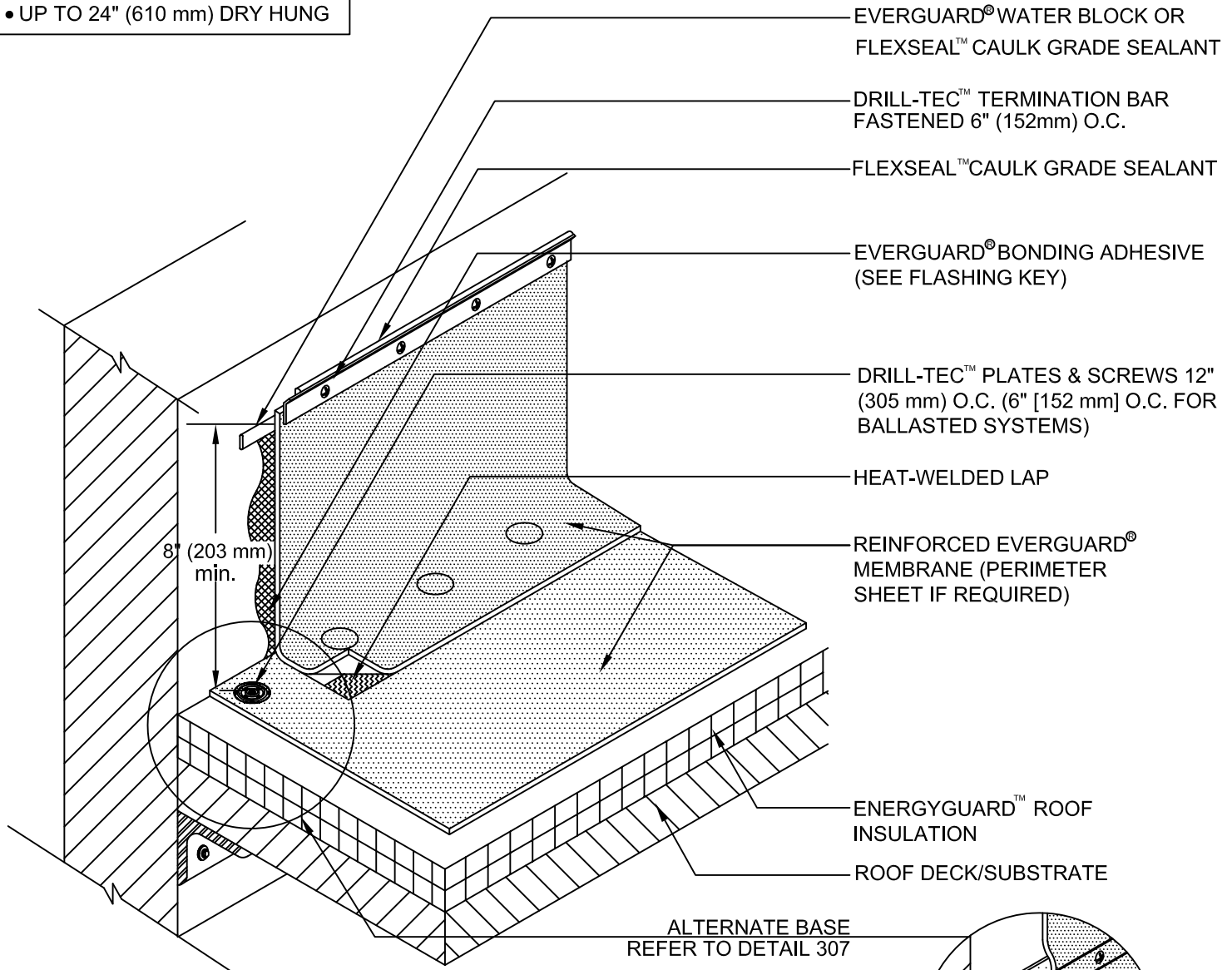


FLASHING KEY

- 24" - 54" (610 mm -1.37 m)
REQUIRES BONDING ADHESIVE
- UP TO 24" (610 mm) DRY HUNG

20-YEAR MAX GUARANTEE



EVERGUARD® WATER BLOCK OR FLEXSEAL™ CAULK GRADE SEALANT

DRILL-TEC™ TERMINATION BAR FASTENED 6" (152mm) O.C.

FLEXSEAL™ CAULK GRADE SEALANT

EVERGUARD® BONDING ADHESIVE (SEE FLASHING KEY)

DRILL-TEC™ PLATES & SCREWS 12" (305 mm) O.C. (6" [152 mm] O.C. FOR BALLASTED SYSTEMS)

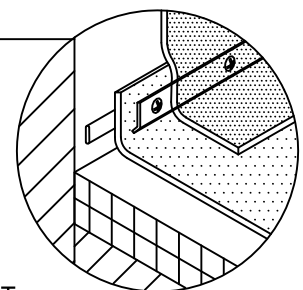
HEAT-WELDED LAP

REINFORCED EVERGUARD® MEMBRANE (PERIMETER SHEET IF REQUIRED)

ENERGYGUARD™ ROOF INSULATION

ROOF DECK/SUBSTRATE

ALTERNATE BASE REFER TO DETAIL 307



NOTE:

1. FOR INSULATION THICKNESS GREATER THAN 8" (203 mm), A HARD BOARD IS REQUIRED ON MECHANICALLY FASTENED SYSTEMS ONLY.
2. IF EVERGUARD®FREEDOM™ MEMBRANE IS USED, BONDING ADHESIVE IS NOT NEEDED AND WALL MUST BE PRIMED
3. APPLY EVERGUARD® TPO CUT EDGE SEALANT TO ALL CUT REINFORCED TPO EDGES (REFER TO EVERGUARD® DETAIL 115).
4. FOR SELF-ADHERED RAPIDSEAM™ TECHNOLOGY SYSTEMS, SEE EVERGUARD® DETAIL 330 FOR LAP APPLICATION.



EverGuard
SINGLE-PLY ROOFING SYSTEMS
PARAPET WALL & CURB SERIES

DRAWING #
302

**WALL/CURB FLASHING WITH
TERMINATION BAR DETAIL**

THIS DETAIL APPLIES TO:

ALL SYSTEMS

www.gaf.com
1 Campus Drive,
Parsippany, NJ 07054

SCALE
N.T.S.

REVISION DATE
8-16-17