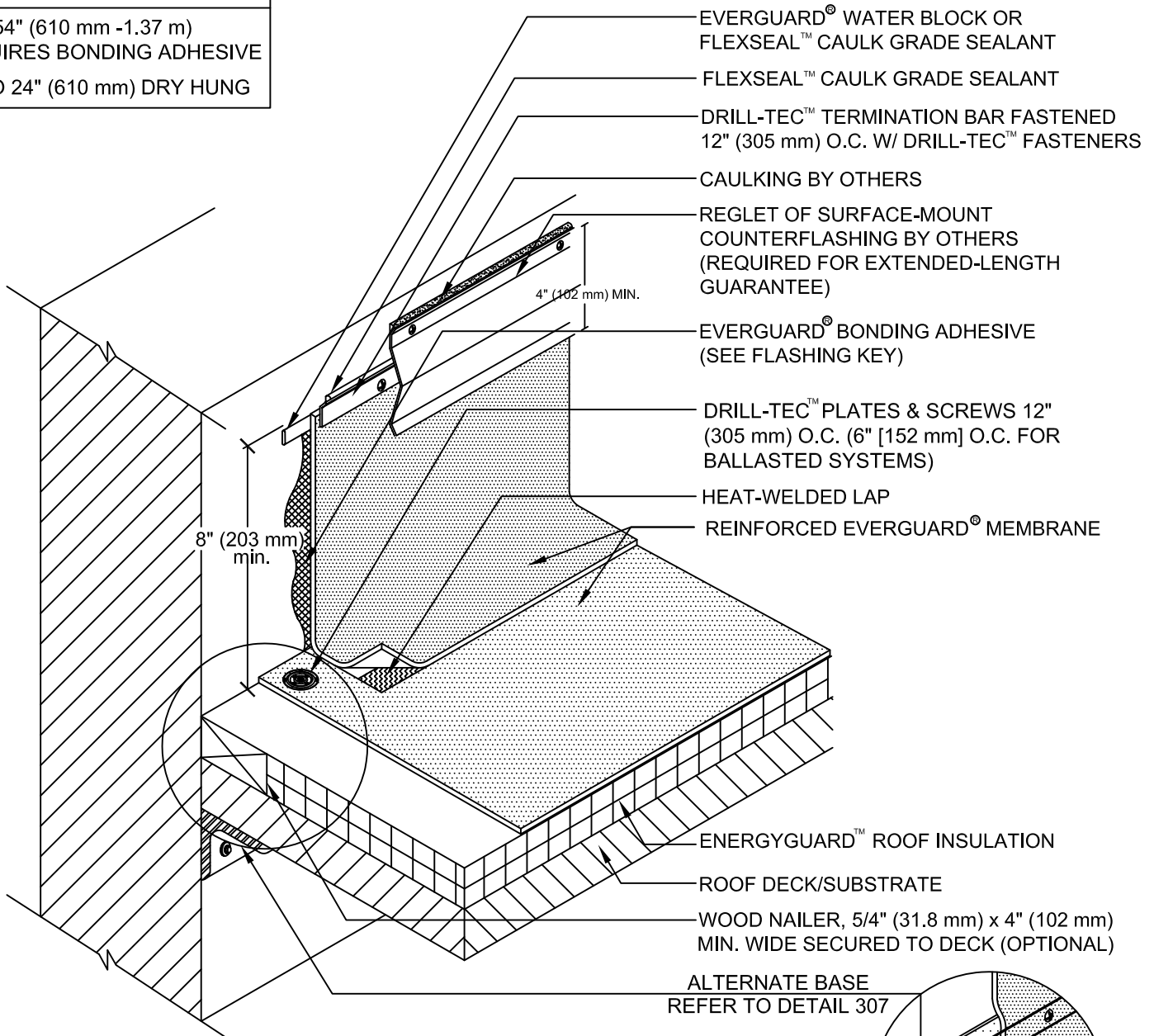


**FLASHING KEY**

- 24" - 54" (610 mm -1.37 m) REQUIRES BONDING ADHESIVE
- UP TO 24" (610 mm) DRY HUNG



**NOTE:**

1. FOR INSULATION THICKNESS GREATER THAN 8" (203 mm), A HARD BOARD IS REQUIRED ON MECHANICALLY FASTENED SYSTEMS ONLY.
2. EXISTING REGLET IS ACCEPTABLE IF METAL IS IN GOOD CONDITION.
3. IF EVERGUARD® FREEDOM™ MEMBRANE IS USED, BONDING ADHESIVE IS NOT NEEDED AND WALL MUST BE PRIMED.
4. FOR SELF-ADHERED RAPIDSEAM™ TECHNOLOGY SYSTEMS, SEE EVERGUARD® DETAIL 330 FOR LAP APPLICATION.
5. APPLY EVERGUARD® TPO CUT EDGE SEALANT TO ALL CUT REINFORCED TPO EDGES (REFER TO EVERGUARD® DETAIL 115).



DRAWING #  
**301**

SCALE  
N.T.S.

**PARAPET WALL FLASHING WITH  
COUNTERFLASHING**

THIS DETAIL APPLIES TO:

**ALL SYSTEMS**

REVISION DATE  
**6-20-16**